

LRMP (PT0797R) PT™ Rabbit mAb

CatalogNo: YM8892 **Recombinant** 

Key Features

Host Species

- Rabbit

Reactivity

- Human

Applications

- WB,IHC,IF,ICC,FC

MW

- 61kD (Observed)

Isotype

- IgG,Kappa

Recommended Dilution Ratios

WB 1:1000-5000

IHC 1:100-300

ICC/IF 1:100-300

FC 1:100-300

Storage

Storage* -15°C to -25°C/1 year(Do not lower than -25°C)

Formulation PBS, 50% glycerol, 0.05% Proclin 300, 0.05%BSA

Basic Information

Clonality Monoclonal

Clone Number PT0797R

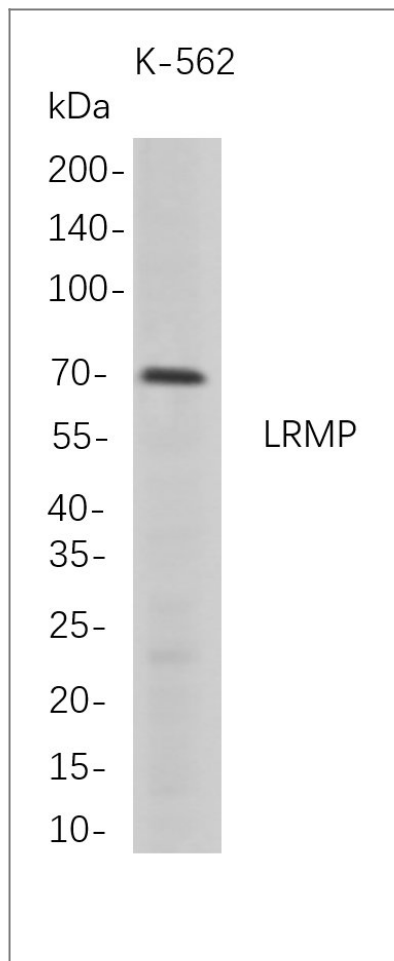
Immunogen Information

Specificity Endogenous

Target Information

Gene name	IRAG2;JAW1;LRMP		
Protein Name	Inositol 1,4,5-triphosphate receptor associated 2;Lymphoid-restricted membrane protein;Protein Jaw1; [Cleaved into: Processed inositol 1,4,5-triphosphate receptor associated 2]		
	Organism	Gene ID	UniProt ID
	Human	4033 ;	Q12912 ;
	Mouse		Q60664 ;
Cellular Localization	[Processed inositol 1,4,5-triphosphate receptor associated 2]: Cytoplasm.; Endoplasmic reticulum membrane; Single-pass type IV membrane protein. Nucleus envelope. Cytoplasm, cytoskeleton, microtubule organizing center, centrosome. Cytoplasm, cytoskeleton, spindle pole. Chromosome. Note=Colocalized with ITPR3 on the endoplasmic reticulum membrane..		
Tissue specificity	Expressed at high levels in pre B-cells, mature B-cells and pre T-cells. Expressed at low levels in mature T-cells and plasma B-cells. Expressed in germinal center B-cells, splenic marginal zone cells and B-cell lymphomas. Expressed in neuronal cells in the cerebral cortex, epithelial cells in tonsil, adrenal glands, zymogen-producing cells in the stomach and epithelial cells in seminal vesicles. {ECO:0000269 PubMed:16739114, ECO:0000269 PubMed:8021504}.		
Function	Plays a role in the delivery of peptides to major histocompatibility complex (MHC) class I molecules; this occurs in a transporter associated with antigen processing (TAP)-independent manner. May play a role in taste signal transduction via ITPR3. May play a role during fertilization in pronucleus congression and fusion. Plays a role in maintaining nuclear shape, maybe as a component of the LINC complex and through interaction with microtubules. Plays a role in the regulation of cellular excitability by regulating the hyperpolarization-activated cyclic nucleotide-gated HCN4 channel activity (By similarity). {ECO:0000250 UniProtKB:Q60664}.		

| Validation Data



Western Blot analysis of K-562 whole cell lysates were separated by 4-20% SDS-PAGE, and the membrane was blotted with anti-LRMP rabbit mAb. The HRP-conjugated Goat anti-Rabbit IgG(H + L) antibody was used to detect the antibody.

Contact information

Orders: order@immunoway.com
Support: tech@immunoway.com
Telephone: 877-594-3616 (Toll Free), 408-747-0185
Website: <http://www.immunoway.com>
Address: 2200 Ringwood Ave San Jose, CA 95131 USA



Please scan the QR code
to access additional
product information:
LRMP (PT0797R)
PT™ Rabbit mAb

For Research Use Only. Not for Use in Diagnostic Procedures.

[Antibody](#) | [ELISA Kits](#) | [Protein](#) | [Reagents](#)