

## ErbB-4 (PT1155R) PT™ Rabbit mAb

CatalogNo: YM8887 **Recombinant** 

### Key Features

#### Host Species

- Rabbit

#### Reactivity

- Human, Mouse, Rat

#### Applications

- WB, IF, IP, ELISA

#### MW

- 147kD (Calculated)
- 180kD (Observed)

#### Isotype

- IgG, Kappa

### Recommended Dilution Ratios

**WB 1:2000-1:10000**

**IF 1:200-1:1000**

**ELISA 1:5000-1:20000**

**IP 1:50-1:200**

### Storage

**Storage\*** -15°C to -25°C/1 year (Do not lower than -25°C)

**Formulation** PBS, 50% glycerol, 0.05% Proclin 300, 0.05% BSA

### Basic Information

**Clonality** Monoclonal

**Clone Number** PT1155R

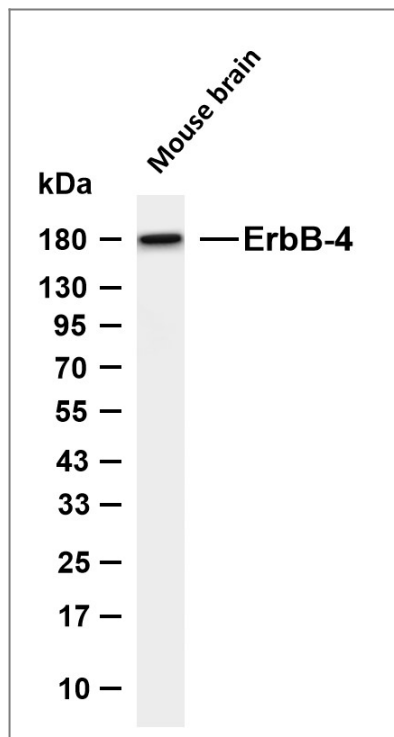
### Immunogen Information

**Specificity** Endogenous

### Target Information

Gene name	ERBB4,HER4		
Protein Name	Receptor tyrosine-protein kinase erbB-4		
	Organism	Gene ID	UniProt ID
	Human	<a href="#">2066</a> ;	<a href="#">Q15303</a> ;
	Mouse	<a href="#">13869</a> ;	<a href="#">Q61527</a> ;
	Rat	<a href="#">59323</a> ;	<a href="#">Q62956</a> ;
Cellular Localization	Cell membrane ; Single-pass type I membrane protein . In response to NRG1 treatment, the activated receptor is internalized.; [ERBB4 intracellular domain]: Nucleus . Mitochondrion . Following proteolytical processing E4ICD (E4ICD1 or E4ICD2 generated from the respective isoforms) is translocated to the nucleus. Significantly more E4ICD2 than E4ICD1 is found in the nucleus. E4ICD2 colocalizes with YAP1 in the nucleus.		
Tissue specificity	Expressed at highest levels in brain, heart, kidney, in addition to skeletal muscle, parathyroid, cerebellum, pituitary, spleen, testis and breast. Lower levels in thymus, lung, salivary gland, and pancreas. Isoform JM-A CYT-1 and isoform JM-B CYT-1 are expressed in cerebellum, but only the isoform JM-B is expressed in the heart.		
Function	Catalytic activity:ATP + a [protein]-L-tyrosine = ADP + a [protein]-L-tyrosine phosphate.,Domain:The WW-binding motifs mediate interaction with WWOX.,Function:Specifically binds and is activated by neuregulins, NRG-2, NRG-3, heparin-binding EGF-like growth factor, betacellulin and NTAK. Interaction with these factors induces cell differentiation. Not activated by EGF, TGF-A, and amphiregulin.,PTM:Isoform JM-A is processed but not isoform JM-B. So, they respectively represent cleavable and non-cleavable forms of the receptor.,PTM:Ligand-binding increases phosphorylation on tyrosine residues.,similarity:Belongs to the protein kinase superfamily. Tyr protein kinase family. EGF receptor subfamily.,similarity:Contains 1 protein kinase domain.,subunit:Homodimer or heterodimer with each of the other ERBB receptors (Potential). Interacts with PDZ domains of DLG2, DLG3, DLG4 and the syntrophin SNTB2. Interacts with CBFA2T3, MUC1 and WWOX.,tissue specificity:Expressed at highest levels in brain, heart, kidney, in addition to skeletal muscle, parathyroid, cerebellum, pituitary, spleen, testis and breast. Lower levels in thymus, lung, salivary gland, and pancreas. Isoform JM-A and isoform JM-B are expressed in cerebellum, but only the isoform JM-B is expressed in the heart.,		

| Validation Data



Various whole cell lysates were separated by 4-20% SDS-PAGE, and the membrane was blotted with anti-ErbB-4 (PT1155R) antibody. The HRP-conjugated Goat anti-Rabbit IgG (H + L) antibody was used to detect the antibody. Lane 1: Mouse brain Predicted band size: 147kDa Observed band size: 180kDa

## Contact information

Orders: [order@immunoway.com](mailto:order@immunoway.com)  
Support: [tech@immunoway.com](mailto:tech@immunoway.com)  
Telephone: 877-594-3616 (Toll Free), 408-747-0185  
Website: <http://www.immunoway.com>  
Address: 2200 Ringwood Ave San Jose, CA 95131 USA



Please scan the QR code to access additional product information:  
**ErbB-4 (PT1155R)**  
**PT™ Rabbit mAb**

For Research Use Only. Not for Use in Diagnostic Procedures.

[Antibody](#) | [ELISA Kits](#) | [Protein](#) | [Reagents](#)