

CHD4 (PT1148R) PT™ Rabbit mAb

CatalogNo: YM8880 **Recombinant** 

Key Features

Host Species

- Rabbit

Reactivity

- Human, Mouse

Applications

- WB, IF, IP, ELISA

MW

- 218kD (Calculated)
260kD (Observed)

Isotype

- IgG, Kappa

Recommended Dilution Ratios

WB 1:2000-1:10000

IF 1:200-1:1000

ELISA 1:5000-1:20000

IP 1:50-1:200

Storage

Storage* -15°C to -25°C/1 year (Do not lower than -25°C)

Formulation PBS, 50% glycerol, 0.05% Proclin 300, 0.05% BSA

Basic Information

Clonality Monoclonal

Clone Number PT1148R

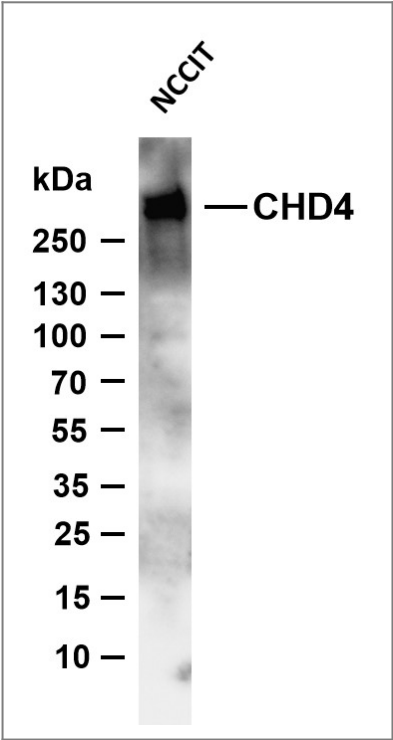
Immunogen Information

Specificity Endogenous

Target Information

Gene name	CHD4		
Protein Name	Chromodomain-helicase-DNA-binding protein 4		
	Organism	Gene ID	UniProt ID
	Human	1108 ;	Q14839 ;
	Mouse	107932 ;	Q6PDQ2 ;
Cellular Localization	Nucleus . Cytoplasm, cytoskeleton, microtubule organizing center, centrosome . Associates with centrosomes in interphase. .		
Tissue specificity	Epithelium,Pancreas,Skin,Uterus,		
Function	Disease:One of the main antigens reacting with anti-MI-2 positive sera of dermatomyositis.,Function:Probable transcription regulator.,PTM:Phosphorylated upon DNA damage, probably by ATM or ATR.,similarity:Belongs to the SNF2/RAD54 helicase family.,similarity:Contains 1 helicase ATP-binding domain.,similarity:Contains 1 helicase C-terminal domain.,similarity:Contains 2 chromo domains.,similarity:Contains 2 PHD-type zinc fingers.,subunit:Central component of the nucleosome remodeling and histone deacetylase (NuRD) repressor complex. Interacts with TRIM27. Part of a complex containing ATR and HDAC2. Interacts with KLF1; the interaction depends on sumoylation of KLF1, and leads to its transcriptional repression.,		

Validation Data



Various whole cell lysates were separated by 4-8% SDS-PAGE, and the membrane was blotted with anti-CHD4 (PT1148R) antibody. The HRP-conjugated Goat anti-Rabbit IgG (H + L) antibody was used to detect the antibody. Lane 1: NCCIT Predicted band size: 218kDa Observed band size: 260kDa

Contact information

Orders: order@immunoway.com
Support: tech@immunoway.com
Telephone: 877-594-3616 (Toll Free), 408-747-0185
Website: http://www.immunoway.com
Address: 2200 Ringwood Ave San Jose, CA 95131 USA



Please scan the QR code
to access additional
product information:
CHD4 (PT1148R)
PT™ Rabbit mAb

For Research Use Only. Not for Use in Diagnostic Procedures.

[Antibody](#) | [ELISA Kits](#) | [Protein](#) | [Reagents](#)