

## Inhibin $\beta$ -E (PT1076R) PT<sup>™</sup> Rabbit mAb

CatalogNo: YM8865 **Recombinant** 

### Key Features

**Host Species**

- Rabbit

**Reactivity**

- Human, Mouse, Rat

**Applications**

- WB, IHC, IF, IP, ELISA

**MW**

- 39kD (Calculated)
- 39kD (Observed)

**Isotype**

- IgG, Kappa

### Recommended Dilution Ratios

**IHC 1:200-1:1000****WB 1:2000-1:10000****IF 1:200-1:1000****ELISA 1:5000-1:20000****IP 1:50-1:200**

### Storage

**Storage\*** -15°C to -25°C/1 year (Do not lower than -25°C)**Formulation** PBS, 50% glycerol, 0.05% Proclin 300, 0.05% BSA

### Basic Information

**Clonality** Monoclonal**Clone Number** PT1076R

### Immunogen Information

**Specificity** Endogenous

## | Target Information

**Gene name** INHBE

**Protein Name** Inhibin beta E chain

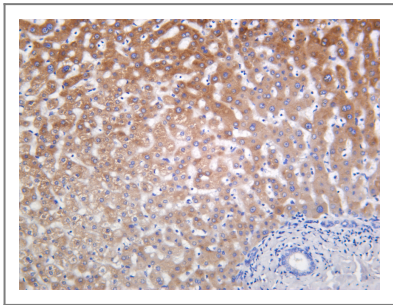
Organism	Gene ID	UniProt ID
Human	<a href="#">83729;</a>	<a href="#">P58166;</a>
Mouse	<a href="#">16326;</a>	<a href="#">O08717;</a>
Rat	<a href="#">83711;</a>	<a href="#">O88959;</a>

**Cellular Localization** Secreted .

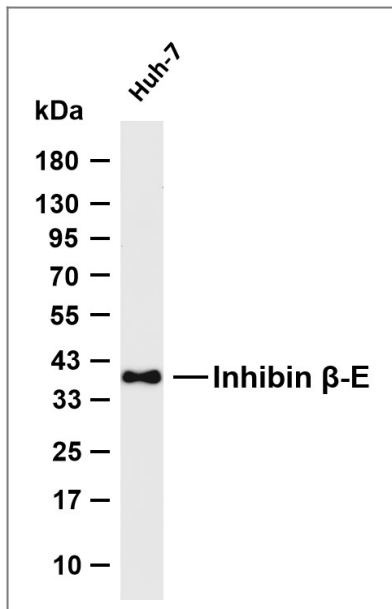
**Tissue specificity** Liver,Muscle,

**Function** Function:Inhibins and activins inhibit and activate, respectively, the secretion of follitropin by the pituitary gland. Inhibins/activins are involved in regulating a number of diverse functions such as hypothalamic and pituitary hormone secretion, gonadal hormone secretion, germ cell development and maturation, erythroid differentiation, insulin secretion, nerve cell survival, embryonic axial development or bone growth, depending on their subunit composition. Inhibins appear to oppose the functions of activins.,similarity:Belongs to the TGF-beta family.,subunit:Homodimeric or heterodimeric through association with alpha and beta subunits, linked by one or more disulfide bonds. Inhibins are heterodimers of one alpha and one beta subunit. Activins are homo- or heterodimers of beta subunits only.,

## | Validation Data



Human liver was stained with anti-Inhibin  $\beta$ -E (PT1076R) Rabbit antibody



Various whole cell lysates were separated by 4-20% SDS-PAGE, and the membrane was blotted with anti-Inhibin  $\beta$ -E (PT1076R) antibody. The HRP-conjugated Goat anti-Rabbit IgG (H + L) antibody was used to detect the antibody. Lane 1: Huh-7 Predicted band size: 39kDa Observed band size: 39kDa

## Contact information

Orders: [order@immunoway.com](mailto:order@immunoway.com)  
Support: [tech@immunoway.com](mailto:tech@immunoway.com)  
Telephone: 877-594-3616 (Toll Free), 408-747-0185  
Website: <http://www.immunoway.com>  
Address: 2200 Ringwood Ave San Jose, CA 95131 USA



Please scan the QR code to access additional product information:

**Inhibin  $\beta$ -E**  
**(PT1076R) PT™**  
**Rabbit mAb**

For Research Use Only. Not for Use in Diagnostic Procedures.

[Antibody](#) | [ELISA Kits](#) | [Protein](#) | [Reagents](#)