

## LDLR (PT1074R) PT® Rabbit mAb

CatalogNo: YM8863 **Recombinant** 

### Key Features

**Host Species**

- Rabbit

**Reactivity**

- Human, Mouse, Rat

**Applications**

- WB, IHC, IF, IP, ELISA

**MW**

- 95kD (Calculated)
- 130kD (Observed)

**Isotype**

- IgG, Kappa

### Recommended Dilution Ratios

**IHC 1:1000-1:4000****WB 1:2000-1:10000****IF 1:200-1:1000****ELISA 1:5000-1:20000****IP 1:50-1:200**

### Storage

**Storage\*** -15°C to -25°C/1 year (Do not lower than -25°C)**Formulation** PBS, 50% glycerol, 0.05% Proclin 300, 0.05% BSA

### Basic Information

**Clonality** Monoclonal**Clone Number** PT1074R

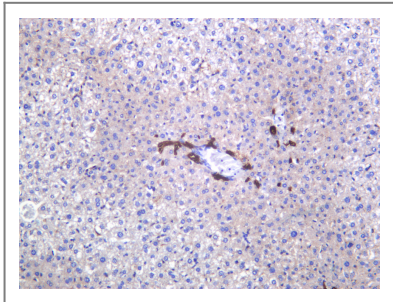
### Immunogen Information

**Specificity** Endogenous

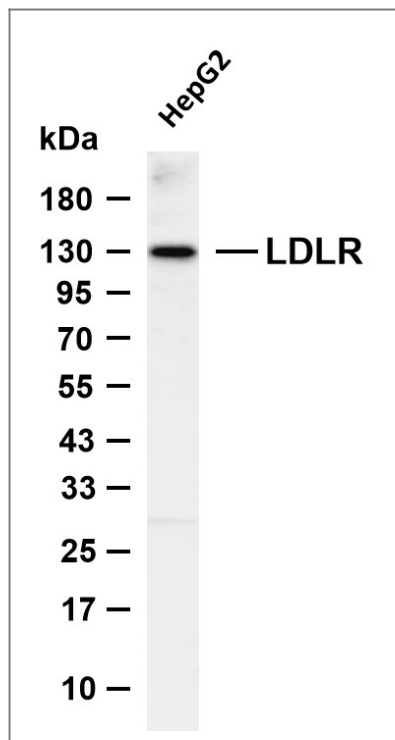
## | Target Information

Gene name	LDLR		
Protein Name	Low-density lipoprotein receptor (LDL receptor)		
	Organism	Gene ID	UniProt ID
	Human	<a href="#">3949</a> ;	<a href="#">P01130</a> ;
	Mouse		<a href="#">P35951</a> ;
	Rat		<a href="#">P35952</a> ;
Cellular Localization	Cell membrane ; Single-pass type I membrane protein . Membrane, clathrin-coated pit . Golgi apparatus . Early endosome . Late endosome . Lysosome . Rapidly endocytosed upon ligand binding. .		
Tissue specificity	Brain,Liver,Lymph,Plasma,		
Function	Disease:Defects in LDLR are the cause of familial hypercholesterolemia (FH) [MIM:143890]; a common autosomal semi-dominant disease that affects about 1 in 500 individuals. The receptor defect impairs the catabolism of LDL, and the resultant elevation in plasma LDL-cholesterol promotes deposition of cholesterol in the skin (xanthelasma), tendons (xanthomas), and coronary arteries (atherosclerosis).,Function:Binds LDL, the major cholesterol-carrying lipoprotein of plasma, and transports it into cells by endocytosis. In order to be internalized, the receptor-ligand complexes must first cluster into clathrin-coated pits. In case of HIV-1 infection, functions as a receptor for extracellular Tat in neurons, mediating its internalization in uninfected cells.,online information:LDLR mutation database,online information:The Singapore human mutation and polymorphism database,PTM:N- and O-glycosylated.,similarity:Belongs to the LDLR family.,similarity:Contains 3 EGF-like domains.,similarity:Contains 6 LDL-receptor class B repeats.,similarity:Contains 7 LDL-receptor class A domains.,subunit:Interacts with LDLRAP1. Interacts with SNX17. Interacts with HCV E1/E2 heterodimer. Interacts with HIV-1 Tat.,		

## | Validation Data



Mouse liver was stained with anti-LDLR (PT1074R) Rabbit antibody



Various whole cell lysates were separated by 4-20% SDS-PAGE, and the membrane was blotted with anti-LDLR (PT1074R) antibody. The HRP-conjugated Goat anti-Rabbit IgG (H + L) antibody was used to detect the antibody. Lane 1: HepG2 Predicted band size: 95kDa Observed band size: 130kDa

## Contact information

Orders: [order@immunoway.com](mailto:order@immunoway.com)  
 Support: [tech@immunoway.com](mailto:tech@immunoway.com)  
 Telephone: 877-594-3616 (Toll Free), 408-747-0185  
 Website: <http://www.immunoway.com>  
 Address: 2200 Ringwood Ave San Jose, CA 95131 USA



Please scan the QR code to access additional product information:  
**LDLR (PT1074R)**  
**PT® Rabbit mAb**

For Research Use Only. Not for Use in Diagnostic Procedures.

[Antibody](#) | [ELISA Kits](#) | [Protein](#) | [Reagents](#)