

DGCR8 (PT1044R) PT™ Rabbit mAb

CatalogNo: YM8833 **Recombinant** 

Key Features

Host Species

- Rabbit

Reactivity

- Human, Mouse, Rat

Applications

- WB, IF, IP, ELISA

MW

- 86kD (Calculated)
- 120kD (Observed)

Isotype

- IgG, Kappa

Recommended Dilution Ratios

WB 1:2000-1:10000

IF 1:200-1:1000

ELISA 1:5000-1:20000

IP 1:50-1:200

Storage

Storage* -15°C to -25°C/1 year (Do not lower than -25°C)

Formulation PBS, 50% glycerol, 0.05% Proclin 300, 0.05% BSA

Basic Information

Clonality Monoclonal

Clone Number PT1044R

Immunogen Information

Specificity Endogenous

Target Information

Gene name DGCR8 C22orf12 DGCRK6 LP4941

Protein Name DGCR8

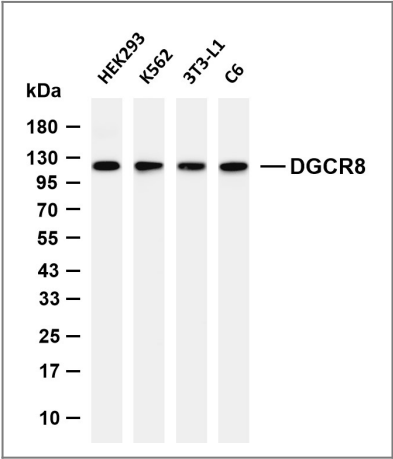
| Organism | Gene ID | UniProt ID |
|----------|-------------------------|--------------------------|
| Human | 54487 ; | Q8WYQ5 ; |
| Mouse | 94223 ; | Q9EQM6 ; |

Cellular Localization Nucleus . Nucleus, nucleolus . Colocalizes with nucleolin and DROSHA in the nucleolus. Mostly detected in the nucleolus as electron-dense granular patches around the fibrillar center (FC) and granular component (GC). Also detected in the nucleoplasm as small foci adjacent to splicing speckles near the chromatin structure. Localized with DROSHA in GW bodies (GWBs), also known as P-bodies (PubMed:17159994).

Tissue specificity Ubiquitously expressed.

Function Disease:May play a part in the etiology of the velocardiofacial/DiGeorge syndrome (VCFS/DGS), a developmental disorder characterized by structural and functional palate anomalies, conotruncal cardiac malformations, immunodeficiency, hypocalcemia, and typical facial anomalies. Most cases result from a deletion of chromosome 22q11.2 (the DiGeorge syndrome chromosome region, or DGCR).,similarity:Contains 1 WW domain.,similarity:Contains 2 DRBM (double-stranded RNA-binding) domains.,tissue specificity:Ubiquitously expressed.,

Validation Data



Various whole cell lysates were separated by 4-20% SDS-PAGE, and the membrane was blotted with anti-DGCR8 (PT1044R) antibody. The HRP-conjugated Goat anti-Rabbit IgG (H + L) antibody was used to detect the antibody. Lane 1: HEK293 Lane 2: K562 Lane 3: 3T3-L1 Lane 4: C6 Predicted band size: 86kDa Observed band size: 120kDa

Contact information

Orders: order@immunoway.com
Support: tech@immunoway.com
Telephone: 877-594-3616 (Toll Free), 408-747-0185
Website: <http://www.immunoway.com>
Address: 2200 Ringwood Ave San Jose, CA 95131 USA



Please scan the QR code to access additional product information:
DGCR8 (PT1044R)
PT™ Rabbit mAb

