

c-Fms (PT1036R) PT™ Rabbit mAb

CatalogNo: YM8825 **Recombinant** 

Key Features

Host Species

- Rabbit

Reactivity

- Human, Mouse, Rat

Applications

- WB, IHC, IF, IP, ELISA

MW

- 109kD (Calculated)
- 140-200kD (Observed)

Isotype

- IgG, Kappa

Recommended Dilution Ratios

IHC 1:200-1:1000

WB 1:2000-1:10000

IF 1:200-1:1000

ELISA 1:5000-1:20000

IP 1:50-1:200

Storage

Storage* -15°C to -25°C/1 year (Do not lower than -25°C)

Formulation PBS, 50% glycerol, 0.05% Proclin 300, 0.05% BSA

Basic Information

Clonality Monoclonal

Clone Number PT1036R

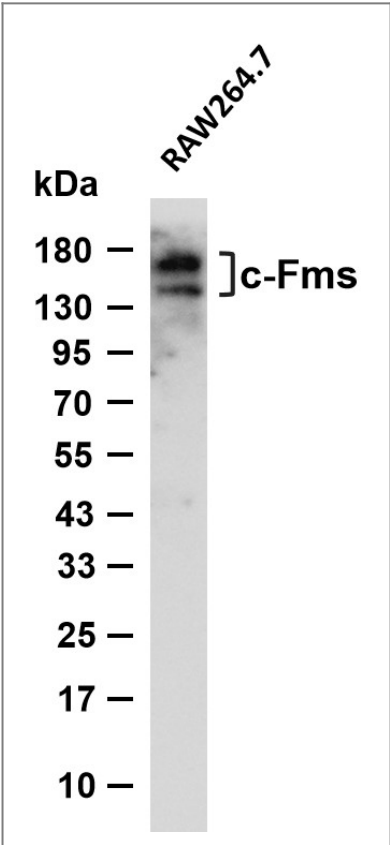
Immunogen Information

Specificity Endogenous

| Target Information

Gene name	CSF1R		
Protein Name	Macrophage colony-stimulating factor 1 receptor		
	Organism	Gene ID	UniProt ID
	Human	1436 ;	P07333 ;
	Mouse		P09581 ;
Cellular Localization	Cell membrane; Single-pass type I membrane protein.		
Tissue specificity	Expressed in bone marrow and in differentiated blood mononuclear cells.		
Function	Catalytic activity:ATP + a [protein]-L-tyrosine = ADP + a [protein]-L-tyrosine phosphate.,Function:Protein tyrosine-kinase transmembrane receptor for CSF1 and IL34.,similarity:Belongs to the protein kinase superfamily. Tyr protein kinase family.,similarity:Belongs to the protein kinase superfamily. Tyr protein kinase family. CSF-1/PDGF receptor subfamily.,similarity:Contains 1 protein kinase domain.,similarity:Contains 5 Ig-like C2-type (immunoglobulin-like) domains.,subunit:Interacts with INPPL1/SHIP2 and THOC5.,tissue specificity:Expressed in bone marrow and in differentiated blood mononuclear cells.,		

| Validation Data



Various whole cell lysates were separated by 4-20% SDS-PAGE, and the membrane was blotted with anti-c-Fms (PT1036R) antibody. The HRP-conjugated Goat anti-Rabbit IgG (H + L) antibody was used to detect the antibody. Lane 1: RAW264.7 Predicted band size: 109kDa Observed band size: 140-200kDa

| Contact information

Orders: order@immunoway.com
Support: tech@immunoway.com
Telephone: 877-594-3616 (Toll Free), 408-747-0185
Website: <http://www.immunoway.com>
Address: 2200 Ringwood Ave San Jose, CA 95131 USA



Please scan the QR code
to access additional
product information:
c-Fms (PT1036R)
PT™ Rabbit mAb

For Research Use Only. Not for Use in Diagnostic Procedures.

[Antibody](#) | [ELISA Kits](#) | [Protein](#) | [Reagents](#)