

Cyclophilin F (PT1033R) PT® Rabbit mAb

CatalogNo: YM8822 **Recombinant** 

Key Features

Host Species

- Rabbit

Reactivity

- Human, Mouse, Rat

Applications

- WB, IHC, IF, IP, ELISA

MW

- 22kD (Calculated)
- 18kD (Observed)

Isotype

- IgG, Kappa

Recommended Dilution Ratios

IHC 1:200-1:1000**WB 1:2000-1:10000****IF 1:200-1:1000****ELISA 1:5000-1:20000****IP 1:50-1:200**

Storage

Storage* -15°C to -25°C/1 year (Do not lower than -25°C)**Formulation** PBS, 50% glycerol, 0.05% Proclin 300, 0.05% BSA

Basic Information

Clonality Monoclonal**Clone Number** PT1033R

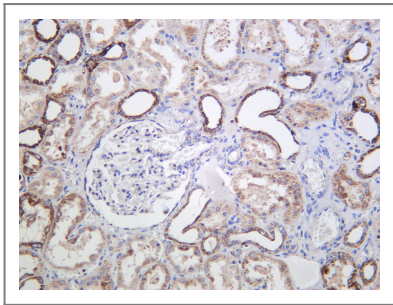
Immunogen Information

Specificity Endogenous

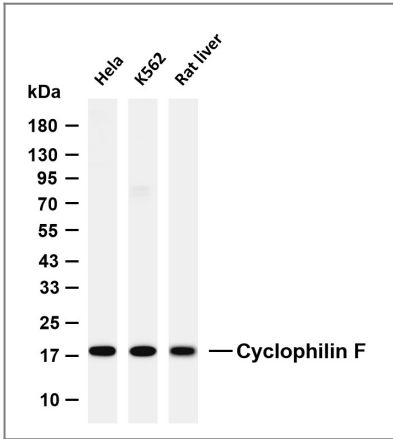
Target Information

Gene name	PPIF		
Protein Name	Peptidyl-prolyl cis-trans isomerase F mitochondrial		
	Organism	Gene ID	UniProt ID
	Human	10105 ;	P30405 ;
	Mouse	105675 ;	Q99KR7 ;
	Rat	282819 ;	P29117 ;
Cellular Localization	Mitochondrion matrix .		
Tissue specificity	Blood,Cord blood,Ovary,		
Function	Catalytic activity:Peptidylproline (omega=180) = peptidylproline (omega=0).,Function:PPlases accelerate the folding of proteins.,Function:PPlases accelerate the folding of proteins. It catalyzes the cis-trans isomerization of proline imidic peptide bonds in oligopeptides.,similarity:Belongs to the cyclophilin-type PPlase family.,similarity:Contains 1 PPlase cyclophilin-type domain.,		

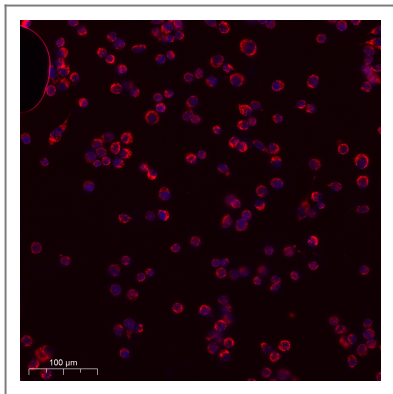
Validation Data



Human kidney was stained with anti-Cyclophilin F (PT1033R) Rabbit antibody



Various whole cell lysates were separated by 4-20% SDS-PAGE, and the membrane was blotted with anti-Cyclophilin F (PT1033R) antibody. The HRP-conjugated Goat anti-Rabbit IgG (H + L) antibody was used to detect the antibody. Lane 1: Hela Lane 2: K562 Lane 3: Rat liver Predicted band size: 22kDa Observed band size: 18kDa



Immunofluorescence analysis of SiHa cell. 1, primary Antibody was diluted at 1:100 (4°C overnight). 2, Goat Anti Rabbit IgG (H&L) - AF594 Secondary antibody (catalog No: RS3611) was diluted at 1:500 (room temperature, 50 min).

Contact information

Orders: order@immunoway.com
Support: tech@immunoway.com
Telephone: 877-594-3616 (Toll Free), 408-747-0185
Website: <http://www.immunoway.com>
Address: 2200 Ringwood Ave San Jose, CA 95131 USA



Please scan the QR code to access additional product information:

Cyclophilin F
(PT1033R) PT®
Rabbit mAb

For Research Use Only. Not for Use in Diagnostic Procedures.

[Antibody](#) | [ELISA Kits](#) | [Protein](#) | [Reagents](#)