

ALKBH5 (PT1017R) PT® Rabbit mAb

CatalogNo: YM8806 **Recombinant** 

Key Features

Host Species

- Rabbit

Reactivity

- Human, Mouse, Rat

Applications

- WB, IHC, IF, IP, ELISA

MW

- 44kD (Calculated)
- 45-48kD (Observed)

Isotype

- IgG, Kappa

Recommended Dilution Ratios

IHC 1:200-1:1000

WB 1:2000-1:10000

IF 1:200-1:1000

ELISA 1:5000-1:20000

IP 1:50-1:200

Storage

Storage* -15°C to -25°C/1 year (Do not lower than -25°C)

Formulation PBS, 50% glycerol, 0.05% Proclin 300, 0.05% BSA

Basic Information

Clonality Monoclonal

Clone Number PT1017R

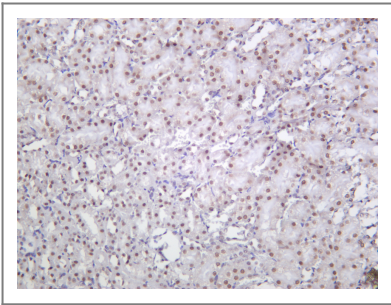
Immunogen Information

Specificity Endogenous

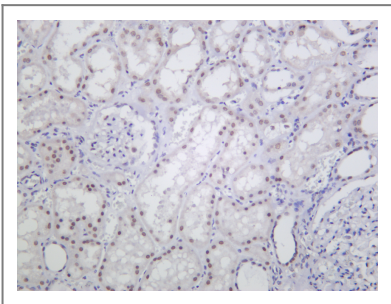
| Target Information

Gene name	ALKBH5 ABH5 OFOXD1		
Protein Name	ALKBH5		
	Organism	Gene ID	UniProt ID
	Human	54890 ;	Q6P6C2 ;
Cellular Localization	Nucleus speckle .		
Tissue specificity	Widely expressed, with highest expression in lung, followed by testis, pancreas, spleen and ovary.		
Function	similarity:Belongs to the alkB family.,		

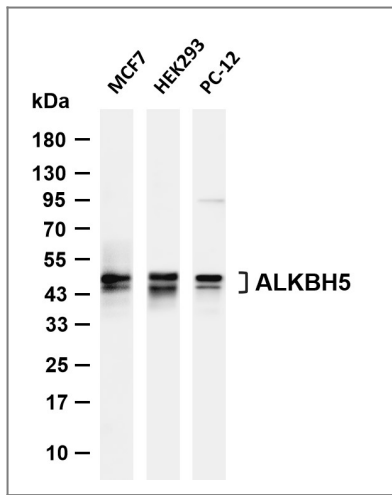
| Validation Data



Rat kidney was stained with anti-ALKBH5 (PT1017R) Rabbit antibody



Human kidney was stained with anti-ALKBH5 (PT1017R) Rabbit antibody



Various whole cell lysates were separated by 4-20% SDS-PAGE, and the membrane was blotted with anti-ALKBH5 (PT1017R) antibody. The HRP-conjugated Goat anti-Rabbit IgG (H + L) antibody was used to detect the antibody. Lane 1: MCF7 Lane 2: HEK293 Lane 3: PC-12 Predicted band size: 44kDa Observed band size: 45-48kDa

Contact information

Orders: order@immunoway.com
 Support: tech@immunoway.com
 Telephone: 877-594-3616 (Toll Free), 408-747-0185
 Website: <http://www.immunoway.com>
 Address: 2200 Ringwood Ave San Jose, CA 95131 USA



Please scan the QR code to access additional product information:
ALKBH5 (PT1017R)
PT® Rabbit mAb

For Research Use Only. Not for Use in Diagnostic Procedures.

[Antibody](#) | [ELISA Kits](#) | [Protein](#) | [Reagents](#)