

## KCTD9 (PT0787R) PT™ Rabbit mAb

CatalogNo: YM8792 **Recombinant** 

### Key Features

#### Host Species

- Rabbit

#### Reactivity

- Human

#### Applications

- WB,IF,ICC

#### MW

- 43kD (Observed)

#### Isotype

- IgG,Kappa

### Recommended Dilution Ratios

**WB 1:1000-5000**

**ICC/IF 1:100-300**

### Storage

**Storage\*** -15°C to -25°C/1 year(Do not lower than -25°C)

**Formulation** PBS, 50% glycerol, 0.05% Proclin 300, 0.05%BSA

### Basic Information

**Clonality** Monoclonal

**Clone Number** PT0787R

### Immunogen Information

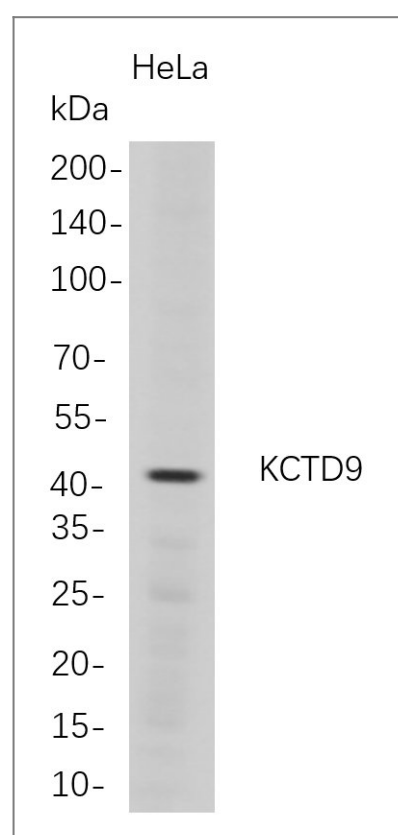
**Specificity** Endogenous

### Target Information

**Gene name** KCTD9

<b>Protein Name</b>	BTB/POZ domain-containing protein KCTD9		
	<b>Organism</b>	<b>Gene ID</b>	<b>UniProt ID</b>
	Human	<a href="#">54793</a> ;	<a href="#">Q7L273</a> ;
<b>Function</b>	Substrate-specific adapter of a BCR (BTB-CUL3-RBX1) E3 ubiquitin-protein ligase complex, which mediates the ubiquitination of target proteins, leading to their degradation by the proteasome. {ECO:0000305}.		

## Validation Data



Western Blot analysis of HeLa whole cell lysates were separated by 4-20% SDS-PAGE, and the membrane was blotted with anti-KCTD9 rabbit mAb. The HRP-conjugated Goat anti-Rabbit IgG(H + L) antibody was used to detect the antibody.

## Contact information

Orders: [order@immunoway.com](mailto:order@immunoway.com)  
 Support: [tech@immunoway.com](mailto:tech@immunoway.com)  
 Telephone: 877-594-3616 (Toll Free), 408-747-0185  
 Website: <http://www.immunoway.com>  
 Address: 2200 Ringwood Ave San Jose, CA 95131 USA



Please scan the QR code  
 to access additional  
 product information:  
**KCTD9 (PT0787R)**  
**PT™ Rabbit mAb**

