

## MMP-1 (PT1005R) PT™ Rabbit mAb

CatalogNo: YM8784 **Recombinant** 

### Key Features

**Host Species**

- Rabbit

**Reactivity**

- Human

**Applications**

- WB,IHC,IF,IP,ELISA

**MW**

- 54kD (Calculated)
- 54kD (Observed)

**Isotype**

- IgG,Kappa

### Recommended Dilution Ratios

**IHC 1:200-1:1000****WB 1:2000-1:10000****IF 1:200-1:1000****ELISA 1:5000-1:20000****IP 1:50-1:200**

### Storage

**Storage\*** -15°C to -25°C/1 year(Do not lower than -25°C)**Formulation** PBS, 50% glycerol, 0.05% Proclin 300, 0.05%BSA

### Basic Information

**Clonality** Monoclonal**Clone Number** PT1005R

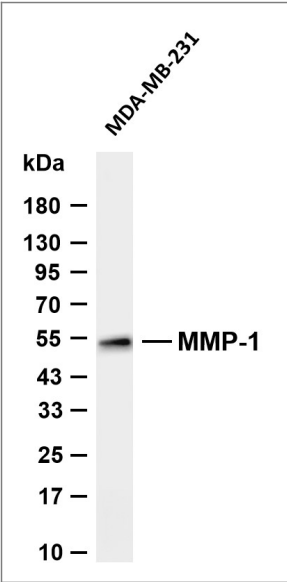
### Immunogen Information

**Specificity** Endogenous

## Target Information

Gene name	MMP1		
Protein Name	Interstitial collagenase		
	Organism	Gene ID	UniProt ID
	Human	<a href="#">4312</a> ;	<a href="#">P03956</a> ;
Cellular Localization	Secreted, extracellular space, extracellular matrix .		
Tissue specificity	Fibroblast,Ovary,Synovial cell,Synovial membrane,Thyroid,		
Function	Catalytic activity: Cleavage of the triple helix of collagen at about three-quarters of the length of the molecule from the N-terminus, at 775-Gly-Ile-776 in the alpha-1(I) chain. Cleaves synthetic substrates and alpha-macroglobulins at bonds where P1' is a hydrophobic residue., cofactor: Binds 2 zinc ions per subunit., cofactor: Binds 4 calcium ions per subunit., Domain: The conserved cysteine present in the cysteine-switch motif binds the catalytic zinc ion, thus inhibiting the enzyme. The dissociation of the cysteine from the zinc ion upon the activation-peptide release activates the enzyme., Domain: There are two distinct domains in this protein; the catalytic N-terminal, and the C-terminal which is involved in substrate specificity and in binding TIMP (tissue inhibitor of metalloproteinases)., enzyme regulation: Can be activated without removal of the activation peptide., Function: Cleaves collagens of types I, II, and III at one site in the helical domain. Also cleaves collagens of types VII and X. In case of HIV infection, interacts and cleaves the secreted viral Tat protein, leading to a decrease in neuronal Tat's mediated neurotoxicity., online information: Collagenase entry, PTM: Undergoes autolytic cleavage to two major forms (22 kDa and 27 kDa). A minor form (25 kDa) is the glycosylated form of the 22 kDa form. The 27 kDa form has no activity while the 22/25 kDa form can act as activator for collagenase., similarity: Belongs to the peptidase M10A family., similarity: Contains 4 hemopexin-like domains., subunit: Interacts with HIV-1 Tat.,		

## Validation Data



Various whole cell lysates were separated by 4-20% SDS-PAGE, and the membrane was blotted with anti-MMP-1 (PT1005R) antibody. The HRP-conjugated Goat anti-Rabbit IgG (H + L) antibody was used to detect the antibody. Lane 1: MDA-MB-231 Predicted band size: 54kDa Observed band size: 54kDa

## | Contact information

Orders: order@immunoway.com  
Support: tech@immunoway.com  
Telephone: 877-594-3616 (Toll Free), 408-747-0185  
Website: <http://www.immunoway.com>  
Address: 2200 Ringwood Ave San Jose, CA 95131 USA



Please scan the QR code  
to access additional  
product information:  
**MMP-1 (PT1005R)**  
**PT™ Rabbit mAb**

---

For Research Use Only. Not for Use in Diagnostic Procedures.

[Antibody](#) | [ELISA Kits](#) | [Protein](#) | [Reagents](#)