

F4/80 (PT0938R) PT[™] Rabbit mAb

CatalogNo: YM8779 **Recombinant** 

Key Features

Host Species

- Rabbit

Reactivity

- Mouse

Applications

- WB,IHC,IF,ELISA

MW

- 102kD (Calculated)
70-250kD (Observed)

Isotype

- IgG,Kappa

Recommended Dilution Ratios

IHC 1:2000-1:8000**WB 1:2000-1:10000****IF 1:200-1:1000****ELISA 1:5000-1:20000**

Storage

Storage* -15°C to -25°C/1 year(Do not lower than -25°C)**Formulation** PBS, 50% glycerol, 0.05% Proclin 300, 0.05%BSA

Basic Information

Clonality Monoclonal**Clone Number** PT0938R

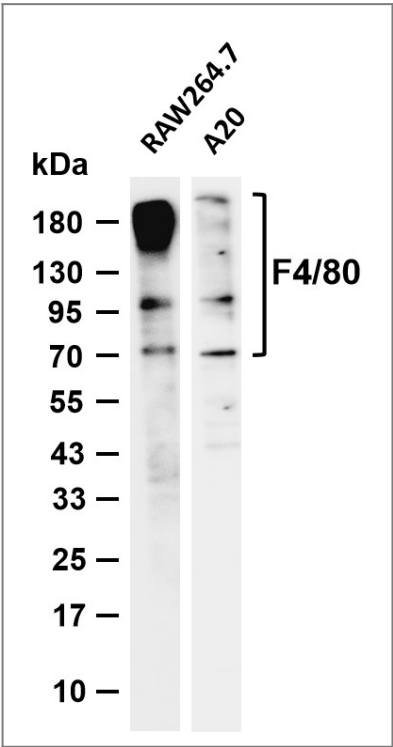
Immunogen Information

Specificity Endogenous

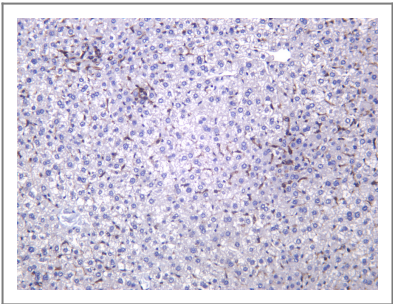
Target Information

Gene name	EMR1
Protein Name	EGF-like module-containing mucin-like hormone receptor-like 1 <div> <div>Mouse</div> <div>Q61549;</div> </div>
Cellular Localization	Cell membrane ; Multi-pass membrane protein .
Tissue specificity	Expression is restricted to eosinophils.
Function	Alternative products:Comment=Additional isoforms seem to exist,Function:Could be involved in cell-cell interactions.,similarity:Belongs to the G-protein coupled receptor 2 family. LN-TM7 subfamily.,similarity:Contains 1 GPS domain.,similarity:Contains 6 EGF-like domains.,tissue specificity:Wide expression; increased levels in peripheral blood mononuclear cells.,

Validation Data



Various whole cell lysates were separated by 4-20% SDS-PAGE, and the membrane was blotted with anti-F4/80 (PT0938R) antibody. The HRP-conjugated Goat anti-Rabbit IgG (H + L) antibody was used to detect the antibody. Lane 1: RAW264.7 Lane 2: A20 Predicted band size: 102kDa Observed band size: 70-250kDa



Mouse liver was stained with anti-F4/80 (PT0938R) Rabbit antibody

| Contact information

Orders: order@immunoway.com
Support: tech@immunoway.com
Telephone: 877-594-3616 (Toll Free), 408-747-0185
Website: <http://www.immunoway.com>
Address: 2200 Ringwood Ave San Jose, CA 95131 USA



Please scan the QR code
to access additional
product information:
F4/80 (PT0938R) PT
™ Rabbit mAb

For Research Use Only. Not for Use in Diagnostic Procedures.

[Antibody](#) | [ELISA Kits](#) | [Protein](#) | [Reagents](#)