

KCTD3 (PT0783R) PT™ Rabbit mAb

CatalogNo: YM8698 **Recombinant** 

Key Features

Host Species

- Rabbit

Reactivity

- Human

Applications

- WB

MW

- 90kD (Observed)

Isotype

- IgG,Kappa

Recommended Dilution Ratios

WB 1:1000-5000

Storage

Storage* -15°C to -25°C/1 year(Do not lower than -25°C)

Formulation PBS, 50% glycerol, 0.05% Proclin 300, 0.05%BSA

Basic Information

Clonality Monoclonal

Clone Number PT0783R

Immunogen Information

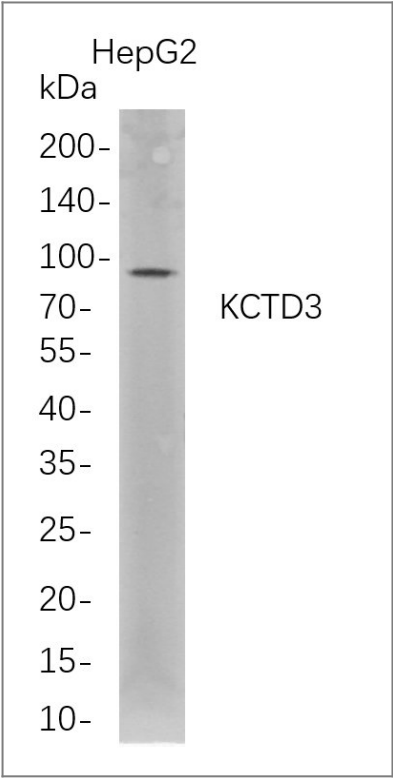
Specificity Endogenous

Target Information

Gene name KCTD3

Protein Name	BTB/POZ domain-containing protein KCTD3;Renal carcinoma antigen NY-REN-45;		
	Organism	Gene ID	UniProt ID
	Human	51133 ;	Q9Y597 ;
	Mouse	226823 ;	Q8BFX3 ;
Cellular Localization	Cell membrane.		
Tissue specificity	Broadly expressed in normal tissues. {ECO:0000269 PubMed:10508479}.		
Function	Accessory subunit of potassium/sodium hyperpolarization-activated cyclic nucleotide-gated channel 3 (HCN3) up-regulating its cell-surface expression and current density without affecting its voltage dependence and kinetics. {ECO:0000250 UniProtKB:Q8BFX3}.		

| Validation Data



Western Blot analysis of HepG2 whole cell lysates were separated by 4-20% SDS-PAGE, and the membrane was blotted with anti-KCTD3 rabbit mAb. The HRP-conjugated Goat anti-Rabbit IgG(H + L) antibody was used to detect the antibody.

| Contact information

Orders: order@immunoway.com
Support: tech@immunoway.com
Telephone: 877-594-3616 (Toll Free), 408-747-0185
Website: http://www.immunoway.com
Address: 2200 Ringwood Ave San Jose, CA 95131 USA



Please scan the QR code
to access additional
product information:
KCTD3 (PT0783R)
PT™ Rabbit mAb

For Research Use Only. Not for Use in Diagnostic Procedures.

[Antibody](#) | [ELISA Kits](#) | [Protein](#) | [Reagents](#)