

# STAT5 (Phospho Tyr694) (PT0067R) PT™ Rabbit mAb

CatalogNo: YM8629 **Recombinant** 

## Key Features

### Host Species

- Rabbit

### Reactivity

- Human, Mouse, Rat

### Applications

- WB, IHC, IF, ELISA

### MW

- 91kD (Calculated)
- 105kD (Observed)

### Isotype

- IgG, Kappa

## Recommended Dilution Ratios

**IHC 1:100-1:1000****WB 1:2000-1:10000****IF 1:200-1:1000****ELISA 1:5000-1:20000**

## Storage

**Storage\*** -15°C to -25°C/1 year (Do not lower than -25°C)

## Basic Information

**Clonality** Monoclonal**Clone Number** PT0067R

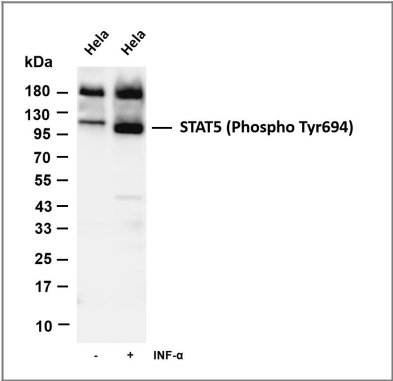
## Immunogen Information

**Specificity** This antibody detects endogenous levels of STAT5A/B only when phosphorylated at Tyr694. This antibody does not recognize phosphorylated at other sites.

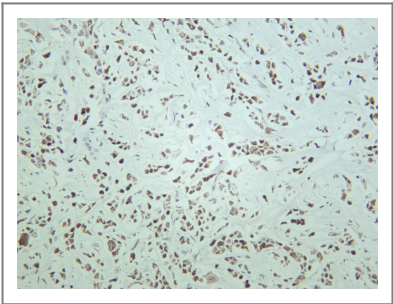
## Target Information

Gene name	STAT5A/STAT5B		
Protein Name	Signal transducer and activator of transcription 5A/B		
	Organism	Gene ID	UniProt ID
	Human	<a href="#">23314;</a>	<a href="#">P42229;</a> <a href="#">P51692;</a>
	Mouse		<a href="#">Q8VI24;</a>
Cellular Localization	Cytoplasm, Nucleus		
Tissue specificity	Brain,Cervix,Epithelium,Lung,Placenta,Synovial membrane		
Function	Function:Carries out a dual Function: signal transduction and activation of transcription. Binds to the GAS element and activates PRL-induced transcription.,online information:STAT5 entry,PTM:Tyrosine phosphorylated in response to IL-2, IL-3, IL-7, IL-15, GM-CSF, growth hormone, prolactin, erythropoietin and thrombopoietin. Tyrosine phosphorylation is required for DNA-binding activity and dimerization. Serine phosphorylation is also required for maximal transcriptional activity.,similarity:Belongs to the transcription factor STAT family.,similarity:Contains 1 SH2 domain.,subcellular location:Translocated into the nucleus in response to phosphorylation.,subunit:Forms a homodimer or a heterodimer with a related family member. Binds NR3C1 (By similarity). Interacts with NCOA1 and SOCS7.,		

Validation Data



Various whole cell lysates were separated by 4-20% SDS-PAGE, and the membrane was blotted with anti-STAT5 (Phospho Tyr694) antibody. The HRP-conjugated Goat anti-Rabbit IgG(H + L) antibody was used to detect the antibody. Lane 1: HeLa Lane 2: HeLa serum starvation for 4 hours then treated with INF-α (100 ng/mL) for 5 minutes Predicted band size: 91kDa Observed band size: 105kDa



Human breast was stained with anti-STAT5 (Phospho Tyr694) rabbit antibody

Contact information

Orders: order@immunoway.com  
Support: tech@immunoway.com  
Telephone: 877-594-3616 (Toll Free), 408-747-0185  
Website: <http://www.immunoway.com>  
Address: 2200 Ringwood Ave San Jose, CA 95131 USA



Please scan the QR code  
to access additional  
product information:  
**STAT5 (Phospho  
Tyr694) (PT0067R)  
PT™ Rabbit mAb**

---

For Research Use Only. Not for Use in Diagnostic Procedures.

[Antibody](#) | [ELISA Kits](#) | [Protein](#) | [Reagents](#)