

## MTCO2 (PT0385R) PT™ Rabbit mAb

CatalogNo: YM8607 **Recombinant** 

### Key Features

#### Host Species

- Rabbit

#### Reactivity

- Human

#### Applications

- WB,IHC,IF,IP,ELISA

#### MW

- 26kD (Calculated)
- 21kD (Observed)

#### Isotype

- IgG,Kappa

### Storage

**Storage\*** -15°C to -25°C/1 year(Do not lower than -25°C)**Formulation** PBS, 50% glycerol, 0.05% Proclin 300, 0.05%BSA

### Recommended Dilution Ratios

**IHC 1:1000-1:4000****WB 1:2000-1:10000****IF 1:200-1:1000****ELISA 1:5000-1:20000****IP 1:50-1:200**

### Basic Information

**Clonality** Monoclonal**Clone Number** PT0385R

### Immunogen Information

**Immunogen** The specific immunogen used to produce this antibody is proprietary information.**Specificity** Endogenous

---

## | Target Information

**Gene name** MT-CO2 COII COXII MTCO2

**Protein Name** Cytochrome c oxidase subunit 2 (Cytochrome c oxidase polypeptide II)

Organism	Gene ID	UniProt ID
Human	<a href="#">637</a> ;	<a href="#">P00403</a> ;
Mouse		<a href="#">P00405</a> ;

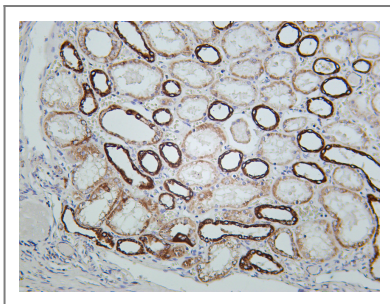
**Cellular Localization** Cytoplasmic

**Tissue specificity** [Isoform 2]: Expressed in spleen, pancreas and placenta (at protein level). ; [Isoform 3]: Expressed in lung, pancreas and spleen (at protein level). ; [Isoform 4]: Expressed in lung and pancreas (at protein level).

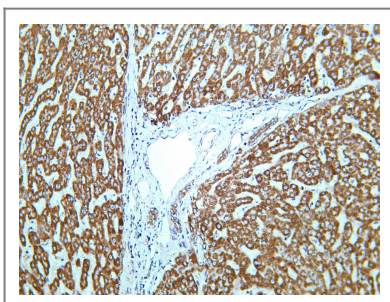
**Function** cofactor:Copper A.,Disease:Defects in MT-CO2 are a cause of cytochrome c oxidase deficiency (COX deficiency) [MIM:220110]; also called mitochondrial complex IV deficiency. COX deficiency is a clinically heterogeneous disorder. The clinical features are ranging from isolated myopathy to severe multisystem disease, with onset from infancy to adulthood.,Disease:Defects in MT-CO2 are associated with tumor formation.,Function:Cytochrome c oxidase is the component of the respiratory chain that catalyzes the reduction of oxygen to water. Subunits 1-3 form the functional core of the enzyme complex. Subunit 2 transfers the electrons from cytochrome c via its binuclear copper A center to the bimetallic center of the catalytic subunit 1.,similarity:Belongs to the cytochrome c oxidase subunit 2 family.,

---

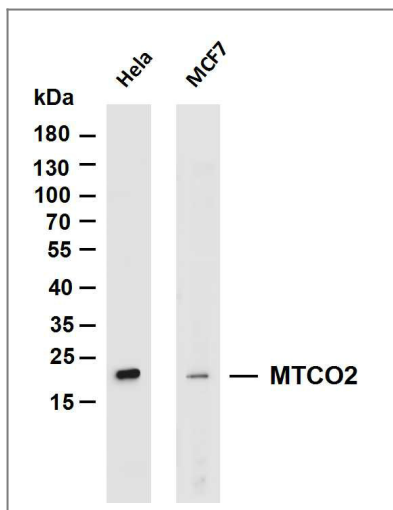
## | Validation Data



Human kidney was stained with Anti-MTCO2 rabbit antibody



Human liver was stained with Anti-MTCO2 rabbit antibody



Various whole cell lysates were separated by 4-20% SDS-PAGE, and the membrane was blotted with anti-MTCO2 antibody. The HRP-conjugated Goat anti-Rabbit IgG (H + L) antibody was used to detect the antibody. Lane 1: HeLa Lane 2: MCF7 Predicted band size: 26kDa Observed band size: 21kDa

## Contact information

Orders: [order@immunoway.com](mailto:order@immunoway.com)  
 Support: [tech@immunoway.com](mailto:tech@immunoway.com)  
 Telephone: 877-594-3616 (Toll Free), 408-747-0185  
 Website: <http://www.immunoway.com>  
 Address: 2200 Ringwood Ave San Jose, CA 95131 USA



Please scan the QR code to access additional product information:  
**MTCO2 (PT0385R)**  
**PT™ Rabbit mAb**

For Research Use Only. Not for Use in Diagnostic Procedures.

[Antibody](#) | [ELISA Kits](#) | [Protein](#) | [Reagents](#)