

## MOB1A/B (PT0421R) PT™ Rabbit mAb

CatalogNo: YM8581 **Recombinant** 

### Key Features

#### Host Species

- Rabbit

#### Reactivity

- Human, Mouse, Rat

#### Applications

- WB, IF, IP, ELISA

#### MW

- 24kD (Calculated)
- 24kD (Observed)

#### Isotype

- IgG, Kappa

### Storage

**Storage\*** -15°C to -25°C/1 year (Do not lower than -25°C)

### Recommended Dilution Ratios

**IHC 1:200-1:1000****WB 1:2000-1:10000****IF 1:200-1:1000****ELISA 1:5000-1:20000****IP 1:50-1:200**

### Basic Information

**Clonality** Monoclonal**Clone Number** PT0421R

### Immunogen Information

**Specificity** Endogenous

### Target Information

**Gene name** HSPB1

**Protein Name** MOB1

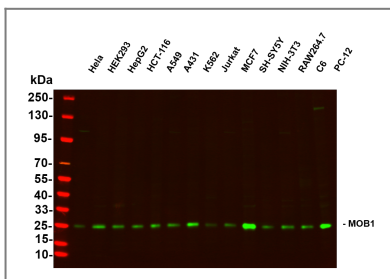
| Organism | Gene ID                  | UniProt ID  |
|----------|--------------------------|---|
| Human    | <a href="#">3315</a> ;   | <a href="#">Q9H8S9</a> ; <a href="#">Q7L9L4</a> ; |
| Mouse    | <a href="#">232157</a> ; | <a href="#">Q921Y0</a> ; <a href="#">Q8BPB0</a> ; |
| Rat      | <a href="#">297387</a> ; | <a href="#">Q3T1J9</a> ;                          |

**Cellular Localization** Cytoplasm, Nucleus

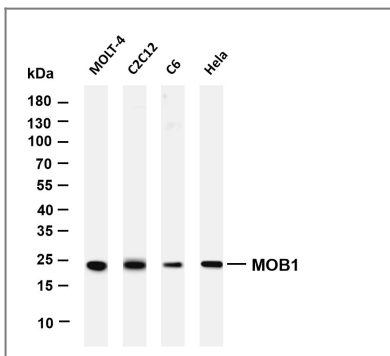
**Tissue specificity** Detected in all tissues tested: skeletal muscle, heart, aorta, large intestine, small intestine, stomach, esophagus, bladder, adrenal gland, thyroid, pancreas, testis, adipose tissue, kidney, liver, spleen, cerebral cortex, blood serum and cerebrospinal fluid. Highest levels are found in the heart and in tissues composed of striated and smooth muscle.

**Function** Function:Stimulates the kinase activity of STK38 and STK38L.,PTM:Phosphorylated.,similarity:Belongs to the MOB1/phocein family.,subunit:Binds STK38 and STK38L.,

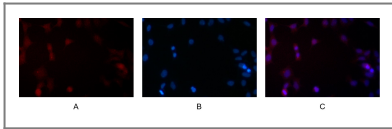
## Validation Data



Various whole cell lysates were separated by 4-20% SDS-PAGE, and the primary antibody was used at 4~C, over night with a 1:5000 dilution . The Dylight 800-conjugated Goat anti-Rabbit antibody(Cat:RS23920) was used to detect the antibody. Lane1: HeLa - Human cervical cancer Lane2: HEK293 - Human normal embryonic kidney Lane3: HepG2 - Human hepatocellular carcinoma Lane4: HCT-116 - Human colon cancer Lane5: A549 - Human lung adenocarcinoma Lane6: A431 - Human skin squamous cell carcinoma Lane7: K562 - Human chronic myeloid leukemia Lane8: Jurkat - Human acute T cell leukemia cells Lane9: MCF7 - Human breast cancer Lane10: SH-SY5Y - Human neuroblastoma cells Lane11: NIH-3T3 - NIH mouse fibroblasts Lane12: RAW264.7 - Mouse mononuclear macrophage leukemia cells Lane13: C6 - Rat glioma cells Lane14: PC-12 - Pheochromocytoma in rats



Various whole cell lysates were separated by 4-20% SDS-PAGE, and the membrane was blotted with anti-MOB1 antibody. The HRP-conjugated Goat anti-Rabbit IgG(H + L) antibody was used to detect the antibody. Lane 1: MOLT-4 Lane 2: C2C12 Lane 3: C6 Lane 4: HeLa Predicted band size: 24kDa Observed band size: 24kDa



Immunofluorescence analysis of HEK293. Picture A: MOB1 antibody (red).  
Picture B: DAPI (blue). Picture C: Merge of A+B

## Contact information

Orders: [order@immunoway.com](mailto:order@immunoway.com)  
Support: [tech@immunoway.com](mailto:tech@immunoway.com)  
Telephone: 877-594-3616 (Toll Free), 408-747-0185  
Website: <http://www.immunoway.com>  
Address: 2200 Ringwood Ave San Jose, CA 95131 USA



Please scan the QR code  
to access additional  
product information:  
**MOB1A/B (PT0421R)**  
**PT™ Rabbit mAb**

For Research Use Only. Not for Use in Diagnostic Procedures.

[Antibody](#) | [ELISA Kits](#) | [Protein](#) | [Reagents](#)