

## Yes1 (PT0670R) PT® Rabbit mAb

CatalogNo: YM8560 **Recombinant** 

### Key Features

#### Host Species

- Rabbit

#### Reactivity

- Human

#### Applications

- WB,IHC,IF,IP,ELISA

#### MW

- 61kD (Calculated)
- 61kD (Observed)

#### Isotype

- IgG,Kappa

### Recommended Dilution Ratios

**WB 1:2000-1:10000**

**IF 1:200-1:1000**

**ELISA 1:5000-1:20000**

**IP 1:50-1:200**

### Storage

**Storage\*** -15°C to -25°C/1 year(Do not lower than -25°C)

**Formulation** PBS, 50% glycerol, 0.05% Proclin 300, 0.05%BSA

### Basic Information

**Clonality** Monoclonal

**Clone Number** PT0670R

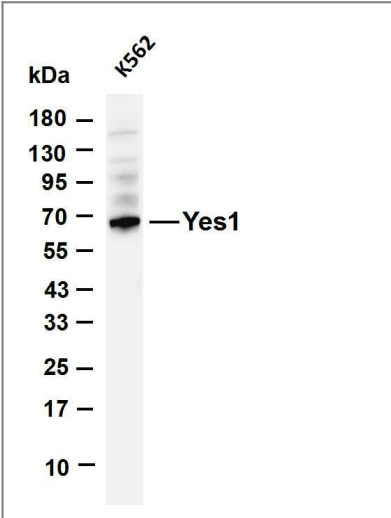
### Immunogen Information

**Specificity** Endogenous

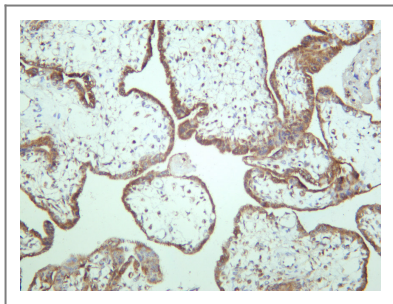
### Target Information

Gene name	YES1		
Protein Name	Proto-oncogene tyrosine-protein kinase Yes		
	Organism	Gene ID	UniProt ID
	Human	<a href="#">6714;</a>	<a href="#">P07947;</a>
	Mouse		<a href="#">Q04736;</a>
	Rat		<a href="#">Q9WUD9;</a>
Cellular Localization	Cell membrane. Cytoplasm, cytoskeleton, microtubule organizing center, centrosome. Cytoplasm, cytosol. Newly synthesized protein initially accumulates in the Golgi region and traffics to the plasma membrane through the exocytic pathway.		
Tissue specificity	Expressed ubiquitously. Platelets, neurons and osteoclasts express 5-fold to 200-fold higher levels than most other tissues.; [Isoform 1]: Expressed in spleen and liver. ; [Isoform 2]: Expressed in brain. ; [Isoform 3]: Expressed in brain.		
Function	Catalytic activity:ATP + a [protein]-L-tyrosine = ADP + a [protein]-L-tyrosine phosphate.,Function:Promotes infectivity of Neisseria gonorrhoeae in epithelial cells by phosphorylating MCP/CD46.,PTM:Autophosphorylated.,similarity:Belongs to the protein kinase superfamily. Tyr protein kinase family. SRC subfamily.,similarity:Contains 1 protein kinase domain.,similarity:Contains 1 SH2 domain.,similarity:Contains 1 SH3 domain.,subcellular location:In epithelial cells infected with Neisseria gonorrhoeae, forms aggregates beneath bacterial microcolonies.,		

Validation Data



Various whole cell lysates were separated by 4-20% SDS-PAGE, and the membrane was blotted with anti-Yes1 antibody. The HRP-conjugated Goat anti-Rabbit IgG(H + L) antibody was used to detect the antibody. Lane 1: K562 Predicted band size: 61kDa Observed band size: 61kDa



Human placenta was stained with anti-Yes1 rabbit antibody

## | Contact information

Orders: [order@immunoway.com](mailto:order@immunoway.com)  
Support: [tech@immunoway.com](mailto:tech@immunoway.com)  
Telephone: 877-594-3616 (Toll Free), 408-747-0185  
Website: <http://www.immunoway.com>  
Address: 2200 Ringwood Ave San Jose, CA 95131 USA



Please scan the QR code  
to access additional  
product information:  
**Yes1 (PT0670R)**  
**PT® Rabbit mAb**

---

For Research Use Only. Not for Use in Diagnostic Procedures.

[Antibody](#) | [ELISA Kits](#) | [Protein](#) | [Reagents](#)