

# TXD12 (PT0941R) PT™ Rabbit mAb

CatalogNo: YM8530 **Recombinant** 

## Key Features

### Host Species

- Rabbit

### Reactivity

- Human, Mouse, Rat

### Applications

- WB, IHC, IF, IP, ELISA

### MW

- 19kD (Calculated)
- 19kD (Observed)

### Isotype

- IgG, Kappa

## Recommended Dilution Ratios

IHC 1:500-1:2000

WB 1:2000-1:10000

IF 1:200-1:1000

ELISA 1:5000-1:20000

IP 1:50-1:200

## Storage

**Storage\*** -15°C to -25°C/1 year (Do not lower than -25°C)

**Formulation** PBS, 50% glycerol, 0.05% Proclin 300, 0.05% BSA

## Basic Information

**Clonality** Monoclonal

**Clone Number** PT0941R

## Immunogen Information

**Specificity** Endogenous

## Target Information

**Gene name** TXNDC12 TLP19 UNQ713/PRO1376

**Protein Name** TXD12

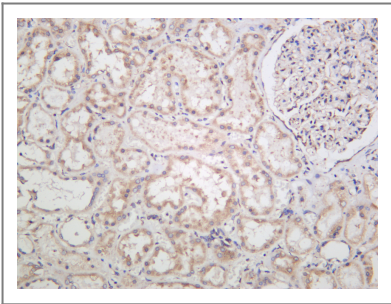
Organism	Gene ID	UniProt ID
Human	<a href="#">51060</a> ;	<a href="#">O95881</a> ;
Mouse	<a href="#">66073</a> ;	<a href="#">Q9CQU0</a> ;
Rat	<a href="#">298370</a> ;	<a href="#">Q498E0</a> ;

**Cellular Localization** Endoplasmic reticulum lumen .

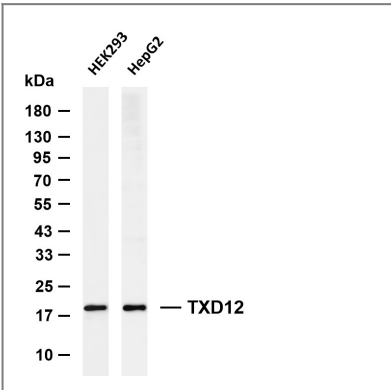
**Tissue specificity** Widely expressed.

**Function** Catalytic activity:2 glutathione + protein-disulfide = glutathione disulfide + protein-dithiol.,cofactor:FAD.,Function:Possesses significant protein thiol-disulfide oxidase activity.,Function:Probable oxidoreductase that acts as a caspase-independent mitochondrial effector of apoptotic cell death. Extramitochondrial AIF induces nuclear chromatin condensation and large scale DNA fragmentation (in vitro). Binds to DNA in a sequence-independent manner.,similarity:Belongs to the FAD-dependent oxidoreductase family.,similarity:Contains 1 thioredoxin domain.,subcellular location:Translocated to the nucleus upon induction of apoptosis.,subunit:Interacts with XIAP.,tissue specificity:Widely expressed.,

## Validation Data



Human kidney was stained with anti-TXD12 (PT0941R) Rabbit antibody



Various whole cell lysates were separated by 4-20% SDS-PAGE, and the membrane was blotted with anti-TXD12 (PT0941R) antibody. The HRP-conjugated Goat anti-Rabbit IgG (H + L) antibody was used to detect the antibody. Lane 1: HEK293 Lane 2: HepG2 Predicted band size: 19kDa Observed band size: 19kDa

## | Contact information

Orders: order@immunoway.com  
Support: tech@immunoway.com  
Telephone: 877-594-3616 (Toll Free), 408-747-0185  
Website: <http://www.immunoway.com>  
Address: 2200 Ringwood Ave San Jose, CA 95131 USA



Please scan the QR code  
to access additional  
product information:  
**TXD12 (PT0941R)**  
**PT™ Rabbit mAb**

---

For Research Use Only. Not for Use in Diagnostic Procedures.

[Antibody](#) | [ELISA Kits](#) | [Protein](#) | [Reagents](#)