

BMAL1 (PT0696R) PT® Rabbit mAb

CatalogNo: YM8505 **Recombinant** 

Key Features

Host Species

- Rabbit

Reactivity

- Human, Mouse, Rat

Applications

- WB, IHC, IF, IP, ELISA

MW

- 69kD (Calculated)
- 78kD (Observed)

Isotype

- IgG, Kappa

Recommended Dilution Ratios

IHC 1:200-1:1000

WB 1:2000-1:10000

IF 1:200-1:1000

ELISA 1:5000-1:20000

IP 1:50-1:200

Storage

Storage* -15°C to -25°C/1 year (Do not lower than -25°C)

Formulation PBS, 50% glycerol, 0.05% Proclin 300, 0.05% BSA

Basic Information

Clonality Monoclonal

Clone Number PT0696R

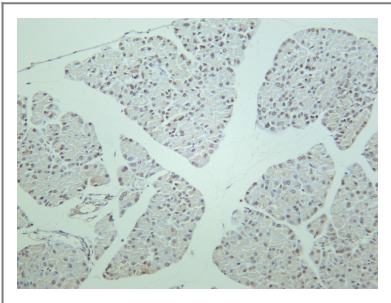
Immunogen Information

Specificity Endogenous

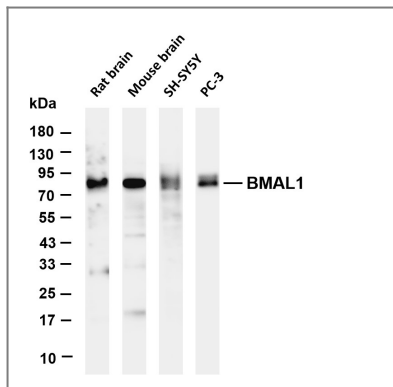
Target Information

Gene name	ARNTL		
Protein Name	Aryl hydrocarbon receptor nuclear translocator-like protein 1		
	Organism	Gene ID	UniProt ID
	Human	406 ;	O00327 ;
	Mouse	11865 ;	Q9WTL8 ;
	Rat	29657 ;	Q9EPW1 ;
Cellular Localization	Nucleus		
Tissue specificity	Hair follicles (at protein level). Highly expressed in the adult brain, skeletal muscle and heart.		
Function	<p>Alternative products:Additional isoforms seem to exist,Function:ARNTL-CLOCK heterodimers activate E-box element (3'-CACGTG-5') transcription of a number of proteins of the circadian clock. This transcription is inhibited in a feedback loop by PER, and also by CRY proteins.,miscellaneous:CLOCK-ARNTL double mutations within the PAS domains result in synergistic desensitization to high levels of CRY on repression of CLOCK-ARNTL transcriptional activity of PER1 and, disrupt circadian rhythmicity.,PTM:Acetylated on Lys-538 upon dimerization with CLOCK. Acetylation facilitates CRY1-mediated repression.,PTM:Phosphorylated upon dimerization with CLOCK.,PTM:Sumoylated on Lys-259 upon dimerization with CLOCK.,similarity:Contains 1 basic helix-loop-helix (bHLH) domain.,similarity:Contains 1 PAC (PAS-associated C-terminal) domain.,similarity:Contains 2 PAS (PER-ARNT-SIM) domains.,subunit:Component of the circadian clock oscillator which includes the CRY proteins, CLOCK or NPAS2, ARNTL or ARNTL2, CSNK1D and/or CSNK1E, TIMELESS and the PER proteins. Efficient DNA binding requires dimerization with another bHLH protein. Heterodimerization with CLOCK is required for E-box-dependent transactivation, for CLOCK nuclear translocation and degradation, and, for phosphorylation of both CLOCK and ARNTL. Interaction with PER and CRY proteins requires translocation to the nucleus. Interaction of the CLOCK-ARNTL heterodimer with PER or CRY inhibits transcription activation. Interacts with HSP90; with AHR in vitro, but not in vivo.,tissue specificity:Highly expressed in the adult brain, skeletal muscle and heart.,</p>		

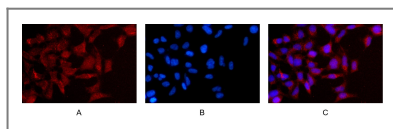
Validation Data



Rat pancreas was stained with anti-BMAL1 rabbit antibody



Various whole cell lysates were separated by 4-20% SDS-PAGE, and the membrane was blotted with anti-BMAL1 antibody. The HRP-conjugated Goat anti-Rabbit IgG(H + L) antibody was used to detect the antibody. Lane 1: Rat brain Lane 2: Mouse brain Lane 3: SH-SY5Y Lane 4: PC-3 Predicted band size: 69kDa Observed band size: 78kDa



Immunofluorescence analysis of HEK293. Picture A: BMAL1 antibody (red). Picture B: DAPI (blue). Picture C: Merge of A+B

Contact information

Orders: order@immunoway.com
 Support: tech@immunoway.com
 Telephone: 877-594-3616 (Toll Free), 408-747-0185
 Website: <http://www.immunoway.com>
 Address: 2200 Ringwood Ave San Jose, CA 95131 USA



Please scan the QR code to access additional product information:
BMAL1 (PT0696R)
PT® Rabbit mAb

For Research Use Only. Not for Use in Diagnostic Procedures.

[Antibody](#) | [ELISA Kits](#) | [Protein](#) | [Reagents](#)