

# Cleaved N-terminal GSDMD (PT0680R) PT<sup>®</sup> Rabbit mAb

CatalogNo: YM8489 **Recombinant** 

## Key Features

### Host Species

- Rabbit

### Reactivity

- Human, Mouse, Rat

### Applications

- WB, IF, IP, ELISA

### MW

- 53kD (Calculated)
- 35kD (Observed)

### Isotype

- IgG, Kappa

## Recommended Dilution Ratios

**WB 1:2000-1:10000****IF 1:200-1:1000****ELISA 1:5000-1:20000****IP 1:50-1:200**

## Storage

**Storage\*** -15°C to -25°C/1 year (Do not lower than -25°C)**Formulation** PBS, 50% glycerol, 0.05% Proclin 300, 0.05% BSA

## Basic Information

**Clonality** Monoclonal**Clone Number** PT0680R

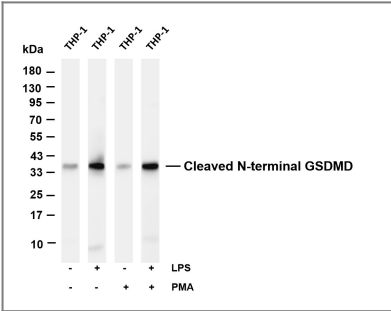
## Immunogen Information

**Specificity** This antibody detects endogenous levels of Cleaved N-terminal GSDMD.

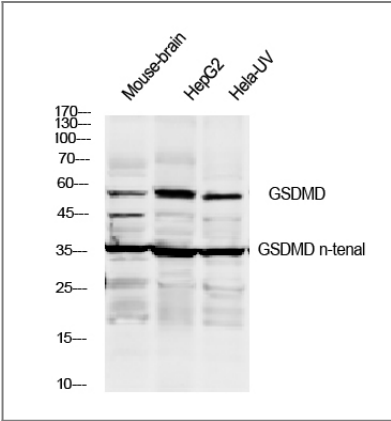
## Target Information

Gene name	GSDMD		
Protein Name	Gasdermin domain-containing protein 1,Gasdermin-D,GSDMD,GSDMD-CT,GSDMD-NT,GSDMD_HUMAN		
	Organism	Gene ID	UniProt ID
	Human		<a href="#">P57764</a> ;
Cellular Localization	[Gasdermin-D]: Cytoplasm, cytosol . Inflammasome . In response to a canonical inflammasome stimulus, such as nigericin, recruited to NLRP3 inflammasome with similar kinetics to that of uncleaved CASP1 precursor. .; [Gasdermin-D, N-terminal]: Cell membrane ; Multi-pass membrane protein . Secreted . Released in the extracellular milieu following pyroptosis. .; [Gasdermin-D, C-terminal]: Cytoplasm, cytosol .		
Tissue specificity	Expressed in the suprabasal cells of esophagus, as well as in the isthmus/neck, pit, and gland of the stomach, suggesting preferential expression in differentiating cells.		
Function	Cleavage at Asp-275 by CASP1 (mature and uncleaved precursor forms), CASP4, CASP5 or CASP8 relieves autoinhibition and is sufficient to initiate pyroptosis (PubMed:26375003, PubMed:29898893, PubMed:32109412). Cleavage by CASP1 and CASP4 is not strictly dependent on the consensus cleavage site on GSDMD but depends on an exosite interface on CASP1 that recognizes and binds the Gasdermin-D, C-terminal (GSDMD-CT) part (PubMed:32109412). Cleavage by CASP8 takes place following inactivation of MAP3K7/TAK1 by Yersinia toxin YopJ (By similarity). Cleavage at Asp-87 by CASP3 or CAPS7 inactivates the ability to mediate pyroptosis (PubMed:28392147, PubMed:28045099).		

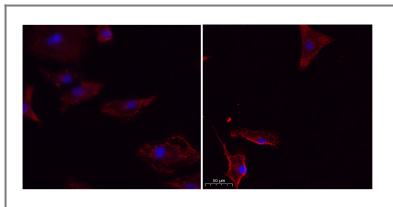
Validation Data



Various whole cell lysates were separated by 4-20% SDS-PAGE, and the membrane was blotted with anti-Cleaved N-terminal GSDMD antibody. The HRP-conjugated Goat anti-Rabbit IgG(H + L) antibody was used to detect the antibody. Lane 1: THP-1 Lane 2: THP-1 was treated with Lipopolysaccharides Lane 3: THP-1 was treated with Phorbol 12-myristate 13-acetate Lane 4: THP-1 was treated with Lipopolysaccharides and Phorbol 12-myristate 13-acetate Predicted band size: 53kDa Observed band size: 35kDa



Western blot analysis of lysates from 1)mouse-brain, 2)Hela cells treated by UV 15min,3) HepG2 cells, primary antibody was diluted at 1:1000, 4°over night, secondary antibody HRP goat anti rabbit (Immunoway:RS0002) was diluted at 1:10000



Immunofluorescence analysis of un-treated (left) A549 and UV treated(right) A549 cell. 1,primary Antibody was diluted at 1:200(4°C overnight). 2, Goat Anti Rabbit IgG (H&L) - Alexa Fluor 594 Secondary antibody was diluted at 1:1000(room temperature, 50min).3, Picture B: DAPI(blue) 10min.

## | Contact information

Orders: [order@immunoway.com](mailto:order@immunoway.com)  
Support: [tech@immunoway.com](mailto:tech@immunoway.com)  
Telephone: 877-594-3616 (Toll Free), 408-747-0185  
Website: <http://www.immunoway.com>  
Address: 2200 Ringwood Ave San Jose, CA 95131 USA



Please scan the QR code to access additional product information:

**Cleaved N-terminal  
GSDMD (PT0680R)  
PT® Rabbit mAb**

For Research Use Only. Not for Use in Diagnostic Procedures.

[Antibody](#) | [ELISA Kits](#) | [Protein](#) | [Reagents](#)