

## p90RSK (phospho Ser380) (PT0759R) PT® Rabbit mAb

CatalogNo: YM8482 **Recombinant** 

### Key Features

#### Host Species

- Rabbit

#### Reactivity

- Human, Mouse, Rat,

#### Applications

- WB, IHC, IF, IP, ELISA

#### MW

- 83kD (Calculated)
- 83kD (Observed)

#### Isotype

- IgG, Kappa

### Recommended Dilution Ratios

IHC 1:1000-1:4000

WB 1:2000-1:10000

IF 1:200-1:1000

ELISA 1:5000-1:20000

IP 1:50-1:200

### Storage

**Storage\*** -15°C to -25°C/1 year (Do not lower than -25°C)

**Formulation** PBS, 50% glycerol, 0.05% Proclin 300, 0.05% BSA

### Basic Information

**Clonality** Monoclonal

**Clone Number** PT0759R

### Immunogen Information

**Specificity** This antibody detects endogenous levels of Rsk-1 only when phosphorylated at Ser380. This antibody does not recognize phosphorylated at other sites.

## Target Information

**Gene name** RPS6KA1

**Protein Name** Ribosomal protein S6 kinase alpha-1

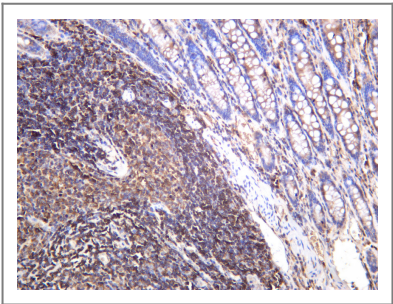
Organism	Gene ID	UniProt ID
Human	<a href="#">6195</a> ;	<a href="#">Q15418</a> ;
Mouse		<a href="#">P18653</a> ;
Rat	<a href="#">81771</a> ;	<a href="#">Q63531</a> ;

**Cellular Localization** Cytoplasm, Nucleus

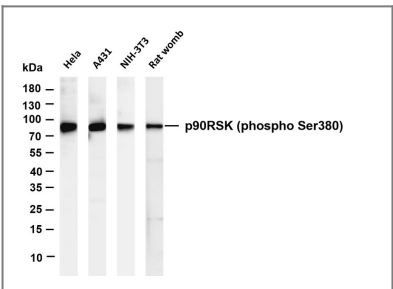
**Tissue specificity** Colon,Epithelium,

**Function** Catalytic activity:ATP + a protein = ADP + a phosphoprotein.,Caution:The sequence shown here is derived from an Ensembl automatic analysis pipeline and should be considered as preliminary data.,cofactor:Magnesium.,enzyme regulation:Activated by multiple phosphorylations on threonine and serine residues.,Function:Serine/threonine kinase that may play a role in mediating the growth-factor and stress induced activation of the transcription factor CREB.,PTM:Autophosphorylated on Ser-380, as part of the activation process.,similarity:Belongs to the protein kinase superfamily.,similarity:Belongs to the protein kinase superfamily. AGC Ser/Thr protein kinase family. S6 kinase subfamily.,similarity:Contains 1 AGC-kinase C-terminal domain.,similarity:Contains 2 protein kinase domains.,subunit:Forms a complex with either ERK1 or ERK2 in quiescent cells. Transiently dissociates following mitogenic stimulation.,

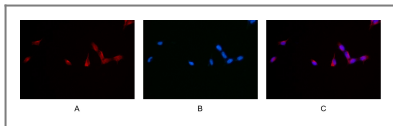
## Validation Data



Human colon carcinoma was stained with anti-p90RSK (phospho Ser380) rabbit antibody



Various whole cell lysates were separated by 4-20% SDS-PAGE, and the membrane was blotted with anti-p90RSK (phospho Ser380) antibody. The HRP-conjugated Goat anti-Rabbit IgG(H + L) antibody was used to detect the antibody. Lane 1: Hela Lane 2: A431 Lane 3: NIH-3T3 Lane 4: Rat womb  
Predicted band size: 83kDa Observed band size: 83kDa



Immunofluorescence analysis of HEK293. Picture A: p90RSK antibody (red). Picture B: DAPI (blue). Picture C: Merge of A+B

## Contact information

Orders: [order@immunoway.com](mailto:order@immunoway.com)  
Support: [tech@immunoway.com](mailto:tech@immunoway.com)  
Telephone: 877-594-3616 (Toll Free), 408-747-0185  
Website: <http://www.immunoway.com>  
Address: 2200 Ringwood Ave San Jose, CA 95131 USA



Please scan the QR code to access additional product information:  
**p90RSK (phospho Ser380) (PT0759R) PT® Rabbit mAb**

For Research Use Only. Not for Use in Diagnostic Procedures.

[Antibody](#) | [ELISA Kits](#) | [Protein](#) | [Reagents](#)