

## KDM1A (PT0084R) PT™ Rabbit mAb

CatalogNo: YM8476 **Recombinant** 

### Key Features

#### Host Species

- Rabbit

#### Reactivity

- Human, Mouse, Rat

#### Applications

- WB, IHC, IF, IP, ELISA

#### MW

- 93kD (Calculated)
- 110kD (Observed)

#### Isotype

- IgG, Kappa

### Recommended Dilution Ratios

IHC 1:200-1:1000

WB 1:2000-1:10000

IF 1:200-1:1000

ELISA 1:5000-1:20000

IP 1:50-1:200

### Storage

**Storage\*** -15°C to -25°C/1 year (Do not lower than -25°C)

**Formulation** PBS, 50% glycerol, 0.05% Proclin 300, 0.05% BSA

### Basic Information

**Clonality** Monoclonal

**Clone Number** PT0084R

### Immunogen Information

**Specificity** Endogenous

## Target Information

**Gene name** KDM1A AOF2 KDM1 KIAA0601 LSD1

**Protein Name** LSD1 (Ser131)

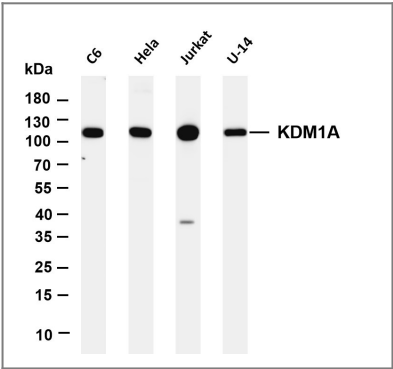
Organism	Gene ID	UniProt ID
Human	<a href="#">6773</a> ;	<a href="#">O60341</a> ;
Mouse	<a href="#">99982</a> ;	<a href="#">Q6ZQ88</a> ;

**Cellular Localization** Nucleus

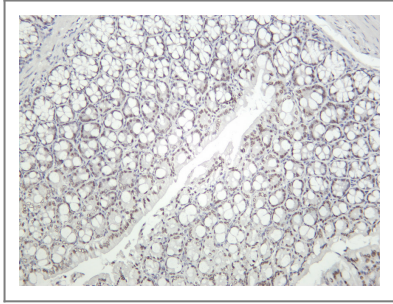
**Tissue specificity** Human small intestine,Lung,

**Function** cofactor:FAD.,Domain:The SWIRM domain may act as an anchor site for a histone tail.,Function:Histone demethylase that demethylates 'Lys-4' of histone H3, a specific tag for epigenetic transcriptional activation, thereby acting as a corepressor. Acts by oxidizing the substrate by FAD to generate the corresponding imine that is subsequently hydrolyzed. Demethylates both mono- and di-methylated 'Lys-4' of histone H3. May play a role in the repression of neuronal genes. Alone, it is unable to demethylate H3 'Lys-4' on nucleosomes and requires the presence of RCOR1/CoREST to achieve such activity. May also demethylate 'Lys-9' of histone H3, a specific tag for epigenetic transcriptional repression, thereby leading to derepression of androgen receptor target genes. Demethylates di-methylated 'Lys-370' of p53/TP53 which prevents interaction of p53/TP53 with TP53BP1 and represses p53/TP53-mediated transcriptional activation. Demethylates and stabilizes the DNA methylase DNMT1. Required for gastrulation during embryogenesis.,similarity:Belongs to the flavin monoamine oxidase family.,similarity:Contains 1 SWIRM domain.,subunit:Component of a BHC histone deacetylase complex that contains HDAC1, HDAC2, HMG20B/BRAF35, KDM1, RCOR1/CoREST and PHF21A/BHC80. The BHC complex may also contain ZMYM2, ZNF217, ZMYM3, GSE1 and GTF2I. In the complex, RCOR1/CoREST strongly enhances the demethylase activity and protects it from the proteasome while PHF21A/BHC80 inhibits the demethylase activity. Interacts with the androgen receptor (AR).,tissue specificity:Ubiquitously expressed.,

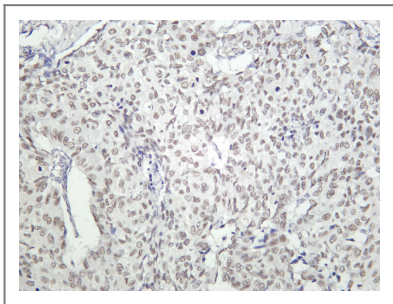
## Validation Data



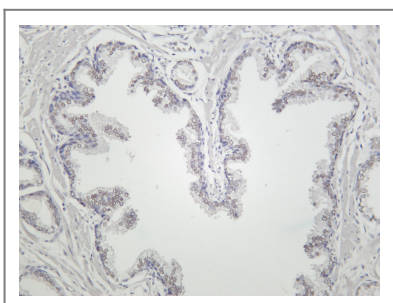
Various whole cell lysates were separated by 4-20% SDS-PAGE, and the membrane was blotted with anti-KDM1A antibody. The HRP-conjugated Goat anti-Rabbit IgG(H + L) antibody was used to detect the antibody. Lane 1: C6 Lane 2: HeLa Lane 3: Jurkat Lane 4: U-14 Predicted band size: 93kDa Observed band size: 110kDa



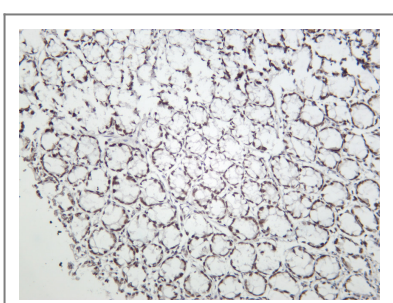
Mouse colon was stained with Anti-KDM1A rabbit antibody



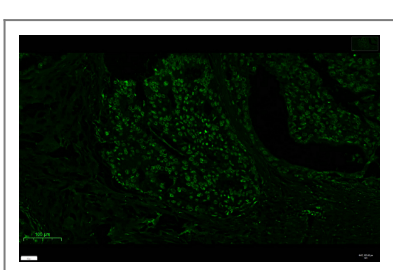
Human prostate carcinoma was stained with Anti-KDM1A rabbit antibody



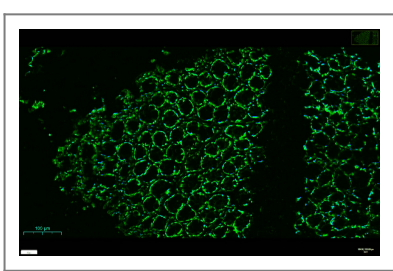
Human prostate was stained with Anti-KDM1A rabbit antibody



Rat colon was stained with Anti-KDM1A rabbit antibody



prostate was stained with Anti-KDM1A rabbit antibody



rat colon was stained with Anti-KDM1A rabbit antibody

## | Contact information

Orders: order@immunoway.com  
Support: tech@immunoway.com  
Telephone: 877-594-3616 (Toll Free), 408-747-0185  
Website: <http://www.immunoway.com>  
Address: 2200 Ringwood Ave San Jose, CA 95131 USA



Please scan the QR code  
to access additional  
product information:  
**KDM1A (PT0084R)**  
**PT™ Rabbit mAb**

---

For Research Use Only. Not for Use in Diagnostic Procedures.

[Antibody](#) | [ELISA Kits](#) | [Protein](#) | [Reagents](#)