

CD206/MRC1 (PT0527R) PT™ Rabbit mAb

CatalogNo: YM8349 **Recombinant** 

Key Features

Host Species

- Rabbit

Reactivity

- Human, Mouse, Rat,

Applications

- WB, IHC, IF, IP, ELISA

MW

- 166kDa (Calculated)
190kD (Observed)

Isotype

- IgG, Kappa

Recommended Dilution Ratios

IHC 1:200-1:1000**WB 1:5000-1:20000****IF 1:200-1:1000****ELISA 1:5000-1:20000****IP 1:50-1:200**

Storage

Storage* -15°C to -25°C/1 year (Do not lower than -25°C)**Formulation** PBS, 50% glycerol, 0.05% Proclin 300, 0.05% BSA

Basic Information

Clonality Monoclonal**Clone Number** PT0527R

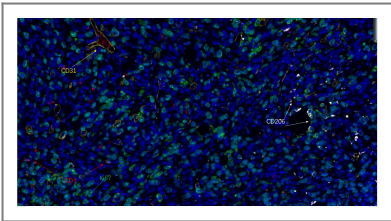
Immunogen Information

Specificity Endogenous

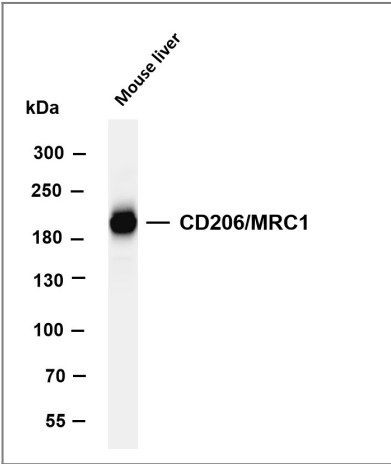
Target Information

Gene name	MRC1		
Protein Name	Macrophage mannose receptor 1		
	Organism	Gene ID	UniProt ID
	Human	4360 ;	P22897 ;
	Mouse	17533 ;	Q61830 ;
Cellular Localization	Membrane		
Tissue specificity	Milk,Placenta,Testis,		
Function	Function:Mediates the endocytosis of glycoproteins by macrophages. Binds both sulfated and non-sulfated polysaccharide chains. Acts as phagocytic receptor for bacteria, fungi and other pathogens.,miscellaneous:CRDs 1-3 have at most very weak affinity for carbohydrate. CRD 4 shows the highest affinity binding and has multispecificity for a variety of monosaccharides. At least 3 CRDs (4, 5, and 7) are required for high affinity binding and endocytosis of multivalent glycoconjugates.,online information:Macrophage mannose receptor,similarity:Contains 1 fibronectin type-II domain.,similarity:Contains 1 ricin B-type lectin domain.,similarity:Contains 8 C-type lectin domains.,		

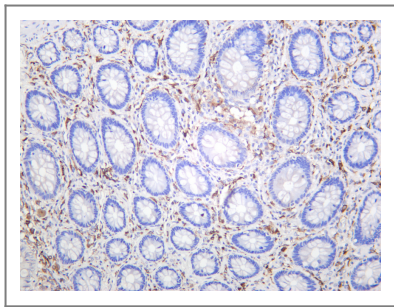
Validation Data



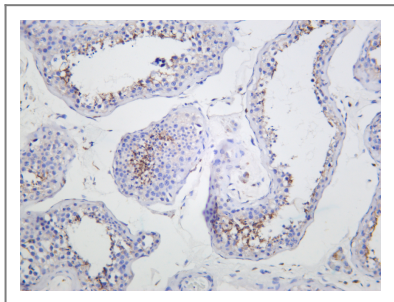
Fluorescence multiplex immunohistochemical analysis of human tonsil tissue (formalin-fixed paraffin-embedded section). The immunostaining was performed by Sextuple-Fluorescence kit (RS0039, Immunoway).CD3 rabbit mAb(RED), Ki67 rabbit mAb(GREEN), CD31 rabbit mAb(YELLOW), CD206 Rabbit mAb(WHITE) was tested with different TSA Fluorescence reagent. Microscopy and pseudocoloring of individual dyes was performed using a Slideviewer Imaging System (Excilone).



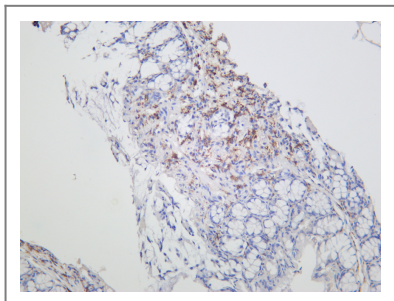
Various whole cell lysates were separated by 4-8% SDS-PAGE, and the membrane was blotted with anti-CD206/MRC1 antibody. The HRP-conjugated Goat anti-Rabbit IgG(H + L) antibody was used to detect the antibody. Lane 1: Mouse liver Predicted band size: 190kDa Observed band size: 190kDa



Human colon was stained with anti-CD206/MRC1 rabbit antibody



Human testis was stained with anti-CD206/MRC1 rabbit antibody



Mouse colon was stained with anti-CD206/MRC1 rabbit antibody

Contact information

Orders: order@immunoway.com
Support: tech@immunoway.com
Telephone: 877-594-3616 (Toll Free), 408-747-0185
Website: <http://www.immunoway.com>
Address: 2200 Ringwood Ave San Jose, CA 95131 USA



Please scan the QR code
to access additional
product information:
**CD206/MRC1
(PT0527R) PT™
Rabbit mAb**

For Research Use Only. Not for Use in Diagnostic Procedures.

[Antibody](#) | [ELISA Kits](#) | [Protein](#) | [Reagents](#)