

## VEGF-A (PT0522R) PT™ Rabbit mAb

CatalogNo: YM8345 **Recombinant** 

### Key Features

#### Host Species

- Rabbit

#### Reactivity

- Human, Mouse, Rat,

#### Applications

- WB, IHC, IF, IP, ELISA

#### MW

- 27kD (Calculated)
- 40kD (Observed)

#### Isotype

- IgG, Kappa

### Recommended Dilution Ratios

IHC 1:1000-1:5000

WB 1:2000-1:10000

IF 1:200-1:1000

ELISA 1:5000-1:20000

IP 1:50-1:200

### Storage

**Storage\*** -15°C to -25°C/1 year (Do not lower than -25°C)

**Formulation** PBS, 50% glycerol, 0.05% Proclin 300, 0.05% BSA

### Basic Information

**Clonality** Monoclonal

**Clone Number** PT0522R

### Immunogen Information

**Specificity** Endogenous

## | Target Information

**Gene name** VEGFA

**Protein Name** Vascular endothelial growth factor A

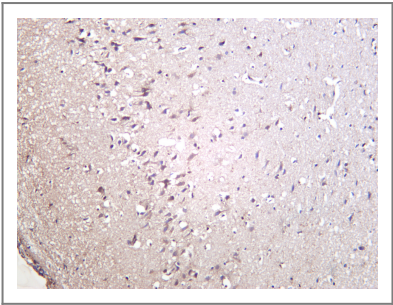
Organism	Gene ID	UniProt ID
Human	<a href="#">7422;</a>	<a href="#">P15692;</a>
Mouse	<a href="#">22339;</a>	<a href="#">Q00731;</a>
Rat	<a href="#">83785;</a>	<a href="#">P16612;</a>

**Cellular Localization** Secreted

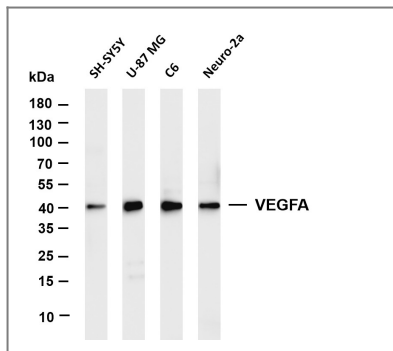
**Tissue specificity** Isoform VEGF189, isoform VEGF165 and isoform VEGF121 are widely expressed. Isoform VEGF206 and isoform VEGF145 are not widely expressed. A higher level expression seen in pituitary tumors as compared to the pituitary gland.

**Function** Function:Growth factor active in angiogenesis, vasculogenesis and endothelial cell growth. Induces endothelial cell proliferation, promotes cell migration, inhibits apoptosis, and induces permeabilization of blood vessels. Binds to the VEGFR1/Flt-1 and VEGFR2/Kdr receptors, heparan sulfate and heparin. Neuropilin-1 binds isoforms VEGF-165 and VEGF-145. Isoform VEGF165B binds to VEGFR2/Kdr but doesn't activate downstream signaling pathways, doesn't activate angiogenesis and inhibits tumor growth.,induction:Regulated by growth factors, cytokines, gonadotropins, nitric oxide, hypoxia, hypoglycemia and oncogenic mutations.,online information:VEGF entry,similarity:Belongs to the PDGF/VEGF growth factor family.,subcellular location:VEGF121 is acidic and freely secreted. VEGF165 is more basic, has heparin-binding properties and, although a significant proportion remains cell-associated, most is freely secreted. VEGF189 is very basic, it is cell-associated after secretion and is bound avidly by heparin and the extracellular matrix, although it may be released as a soluble form by heparin, heparinase or plasmin.,subunit:Homodimer; disulfide-linked. Also found as heterodimer with PlGF.,tissue specificity:The VEGF189, VEGF-165 and VEGF-121 isoforms are widely expressed, whereas the VEGF206 and VEGF-145 are uncommon.,

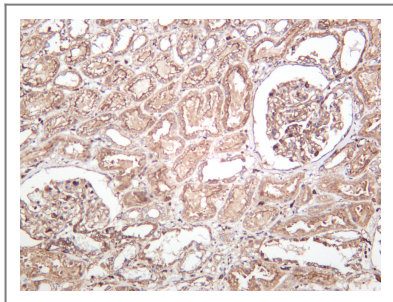
## | Validation Data



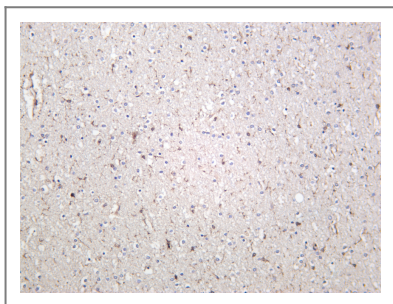
Rat brain was stained with anti-VEGFA rabbit antibody



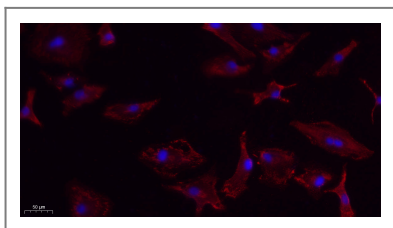
Various whole cell lysates were separated by 4-20% SDS-PAGE, and the membrane was blotted with anti-VEGFA antibody. The HRP-conjugated Goat anti-Rabbit IgG(H + L) antibody was used to detect the antibody. Lane 1: SH-SY5Y Lane 2: U-87 MG Lane 3: C6 Lane 4: Neuro-2a Predicted band size: 27kDa Observed band size: 40kDa



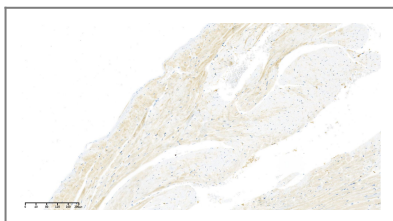
Human kidney was stained with anti-VEGFA rabbit antibody



Mouse brain was stained with anti-VEGFA rabbit antibody



Immunofluorescence analysis of A549. 1, primary Antibody(red) was diluted at 1:200(4°C overnight). 2, Goat Anti Rabbit IgG (H&L) - Alexa Fluor 594 Secondary antibody was diluted at 1:1000(room temperature, 50min).3, DAPI(blue) 10min.



Rat heart was stained with anti-VEGFA Rabbit antibody

## Contact information

Orders: order@immunoway.com  
 Support: tech@immunoway.com  
 Telephone: 877-594-3616 (Toll Free), 408-747-0185  
 Website: <http://www.immunoway.com>  
 Address: 2200 Ringwood Ave San Jose, CA 95131 USA



Please scan the QR code to access additional product information:  
**VEGF-A (PT0522R)**  
**PT™ Rabbit mAb**

