

ERK1/2 (PT0510R) PT™ Rabbit mAb

CatalogNo: YM8336 **Recombinant**  **KD/KO Validated** 

Key Features

Host Species

- Rabbit

Reactivity

- Human, Mouse, Rat, Geese

Applications

- WB, IHC, IF, IP, ELISA

MW

- 43kD, 41kD (Calculated)
- 43kD, 41kD (Observed)

Isotype

- IgG, Kappa

Storage

Storage* -15°C to -25°C/1 year (Do not lower than -25°C)

Formulation PBS, 50% glycerol, 0.05% Proclin 300, 0.05% BSA

Recommended Dilution Ratios

IHC 1:2000-1:10000

WB 1:2000-1:10000

IF 1:200-1:1000

ELISA 1:5000-1:20000

IP 1:50-1:200

Basic Information

Clonality Monoclonal

Clone Number PT0510R

Immunogen Information

Immunogen The specific immunogen used to produce this antibody is proprietary information.

Specificity Endogenous

Target Information

Gene name MAPK1/MAPK3

Protein Name Mitogen-activated protein kinase 3

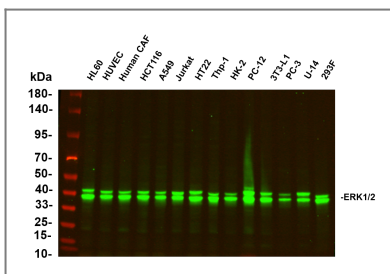
| Organism | Gene ID | UniProt ID |
|----------|--|---|
| Human | 5595 ; 5594 ; | P28482 ; P27361 ; |
| Mouse | 26417 ; 26413 ; | |
| Rat | 50689 ; 116590 ; | P21708 ; P63086 ; |

Cellular Localization Cytoplasm, Nucleus

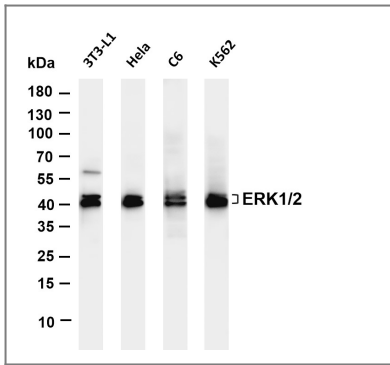
Tissue specificity Epithelium, Eye, Hepatoma, Human cervix, Lymph,

Function Catalytic activity: ATP + a protein = ADP + a phosphoprotein., cofactor: Magnesium., Domain: The TXY motif contains the threonine and tyrosine residues whose phosphorylation activates the MAP kinases., enzyme regulation: Activated by tyrosine phosphorylation in response to insulin and NGF., Function: Involved in both the initiation and regulation of meiosis, mitosis, and postmitotic functions in differentiated cells by phosphorylating a number of transcription factors such as ELK-1. Phosphorylates EIF4EBP1; required for initiation of translation. Phosphorylates microtubule-associated protein 2 (MAP2). Phosphorylates SPZ1 (By similarity). Phosphorylates heat shock factor protein 4 (HSF4)., PTM: Dually phosphorylated on Thr-202 and Tyr-204, which activates the enzyme., similarity: Belongs to the protein kinase superfamily., similarity: Belongs to the protein kinase superfamily. CMGC Ser/Thr protein kinase family. MAP kinase subfamily., similarity: Contains 1 protein kinase domain., subunit: Interacts with MORG1 (By similarity). Binds to HIV-1 Nef. This interaction inhibits its kinase activity. Interacts with HSF4 and NISCH.,

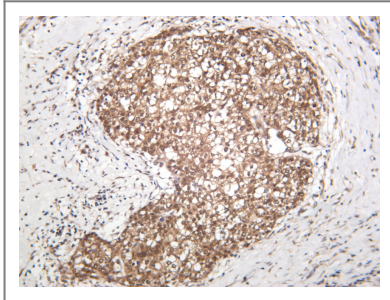
Validation Data



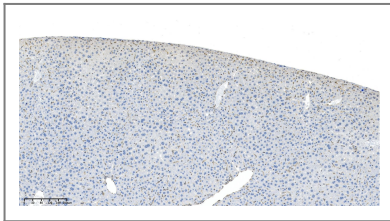
Various whole cell lysates were separated by 4-20% SDS-PAGE, and the primary antibody was used at 4°C over night with a 1:5000 dilution. The Dylight 800-conjugated Goat anti-Rabbit antibody (Cat:RS23920) was used to detect the antibody. Lane1: HL60 - Human promyelocytic leukemia cell Lane2: HUVEC - Human umbilical vein endothelial cell Lane3: Human CAF - Human cancer-associated fibroblast Lane4: HCT116 - Human colorectal carcinoma Lane5: A549 - Human lung carcinoma Lane6: Jurkat - Human T lymphocyte leukemia Lane7: HT22 - Mouse hippocampal neuronal Lane8: Thp-1 - Human monocytic leukemia Lane9: HK-2 - Human proximal tubular epithelial Lane10: PC-12 - Rat adrenal pheochromocytoma Lane11: 3T3-L1 - Mouse embryonic fibroblast Lane12: PC-3 - Human prostate adenocarcinoma Lane13: U-14 - Mouse cervical carcinoma Lane14: 293F - HEK293 derivative, adapted for suspension culture Predicted band size: 42,44kDa Observed band size: 42,44 kDa



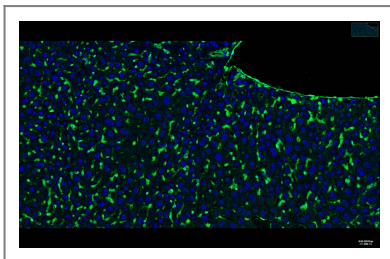
Various whole cell lysates were separated by 4-20% SDS-PAGE, and the membrane was blotted with anti-ERK1/2 antibody. The HRP-conjugated Goat anti-Rabbit IgG (H + L) antibody was used to detect the antibody. Lane 1: 3T3-L1 Lane 2: HeLa Lane 3: C6 Lane 4: K562 Predicted band size: 43,41kDa Observed band size: 43,41kDa



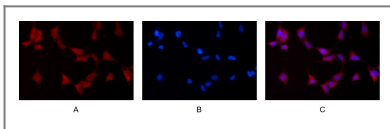
Human breast carcinoma was stained with anti-ERK1/2 rabbit antibody



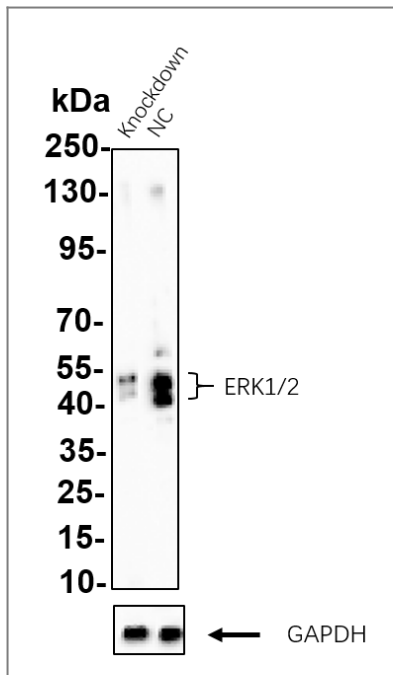
Mouse liver was stained with anti-ERK1/2 Rabbit antibody



Mouse liver was stained with anti-ERK1/2 Rabbit antibody



Immunofluorescence analysis of HEK293. Picture A: ERK1/2 antibody (red). Picture B: DAPI (blue). Picture C: Merge of A+B



Western blot analysis of lysates from Thp-1 WT and knockdown cell. Cell lysates were separated by 4-20% SDS-PAGE, and the membrane was blotted with ERK1/2 PT0510R PT Rabbit mAb. The HRP-conjugated Goat anti-Rabbit IgG (H + L) antibody was used to detect the antibody.

Contact information

Orders: order@immunoway.com
 Support: tech@immunoway.com
 Telephone: 877-594-3616 (Toll Free), 408-747-0185
 Website: <http://www.immunoway.com>
 Address: 2200 Ringwood Ave San Jose, CA 95131 USA



Please scan the QR code to access additional product information:
ERK1/2 (PT0510R)
PT™ Rabbit mAb

For Research Use Only. Not for Use in Diagnostic Procedures.

[Antibody](#) | [ELISA Kits](#) | [Protein](#) | [Reagents](#)