

LAMB1 (PT0479R) PT™ Rabbit mAb

CatalogNo: YM8312 **Recombinant** 

Key Features

Host Species

- Rabbit

Reactivity

- Human, Mouse, Rat

Applications

- WB, IHC, IF, ELISA

MW

- 198kD (Calculated)
240kD (Observed)

Isotype

- IgG, Kappa

Recommended Dilution Ratios

IHC 1:200-1:1000**WB 1:2000-1:10000****IF 1:200-1:1000****ELISA 1:5000-1:20000**

Storage

Storage* -15°C to -25°C/1 year (Do not lower than -25°C)**Formulation** PBS, 50% glycerol, 0.05% Proclin 300, 0.05% BSA

Basic Information

Clonality Monoclonal**Clone Number** PT0479R

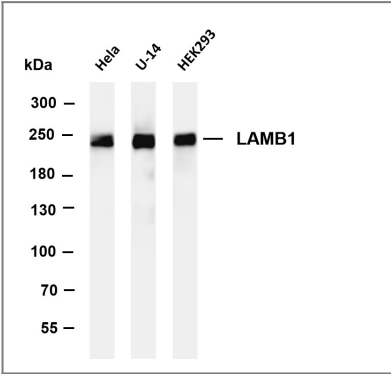
Immunogen Information

Specificity Endogenous

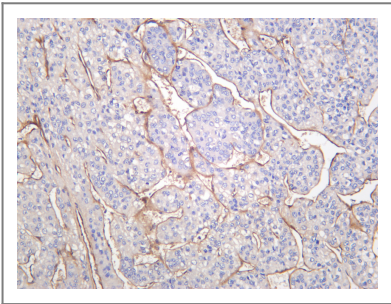
Target Information

Gene name	LAMB1		
Protein Name	Laminin subunit beta-1		
	Organism	Gene ID	UniProt ID
	Human	3912;	P07942;
	Mouse		P02469;
Cellular Localization	Secreted		
Tissue specificity	Colon,Liver,Muscle,Plasma,		
Function	<p>Domain:Domains VI and IV are globular.,Domain:The alpha-helical domains I and II are thought to interact with other laminin chains to form a coiled coil structure.,Function:Binding to cells via a high affinity receptor, laminin is thought to mediate the attachment, migration and organization of cells into tissues during embryonic development by interacting with other extracellular matrix components.,similarity:Contains 1 laminin IV type B domain.,similarity:Contains 1 laminin N-terminal domain.,similarity:Contains 13 laminin EGF-like domains.,subcellular location:Major component.,subunit:Laminin is a complex glycoprotein, consisting of three different polypeptide chains (alpha, beta, gamma), which are bound to each other by disulfide bonds into a cross-shaped molecule comprising one long and three short arms with globules at each end. Beta-1 is a subunit of laminin-1 (EHS laminin), laminin-2 (merosin), and laminin-6 (K-laminin).,</p>		

Validation Data



Various whole cell lysates were separated by 4-8% SDS-PAGE, and the membrane was blotted with anti- LAMB1 antibody. The HRP-conjugated Goat anti-Rabbit IgG(H + L) antibody was used to detect the antibody. Lane 1: HeLa Lane 2: U-14 Lane 3: HEK293 Predicted band size: 198kDa Observed band size: 240kDa



Human hepatocellular carcinoma was stained with anti-LAMB1 rabbit antibody

| Contact information

Orders: order@immunoway.com
Support: tech@immunoway.com
Telephone: 877-594-3616 (Toll Free), 408-747-0185
Website: <http://www.immunoway.com>
Address: 2200 Ringwood Ave San Jose, CA 95131 USA



Please scan the QR code
to access additional
product information:
LAMB1 (PT0479R)
PT™ Rabbit mAb

For Research Use Only. Not for Use in Diagnostic Procedures.

[Antibody](#) | [ELISA Kits](#) | [Protein](#) | [Reagents](#)