

# Ubiquitin K48 (PT0424R) PT™ Rabbit mAb

CatalogNo: YM8266 **Recombinant** 

## Key Features

### Host Species

- Rabbit

### Reactivity

- Human, Mouse, Rat,

### Applications

- WB, IHC, IF, IP, ELISA

### MW

- 26kD (Calculated)
- 13-250kD (Observed)

### Isotype

- IgG, Kappa

## Recommended Dilution Ratios

**IHC 1:200-1:1000****WB 1:500-1:2000****IF 1:200-1:1000****ELISA 1:5000-1:20000****IP 1:50-1:200**

## Storage

**Storage\*** -15°C to -25°C/1 year (Do not lower than -25°C)**Formulation** PBS, 50% glycerol, 0.05% Proclin 300, 0.05% BSA

## Basic Information

**Clonality** Monoclonal**Clone Number** PT0424R

## Immunogen Information

**Specificity** Endogenous

## Target Information

**Gene name** UBA52/RPS27A/UBB/UBC

**Protein Name** Ubiquitin

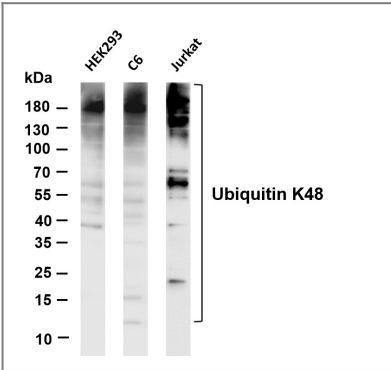
Organism	Gene ID	UniProt ID
Human	<a href="#">7311</a> ;	<a href="#">P0CG47</a> ; <a href="#">P0CG48</a> ; <a href="#">P62979</a> ; <a href="#">P62987</a> ;
Mouse	<a href="#">22187</a> ; <a href="#">22190</a> ; <a href="#">78294</a> ; <a href="#">22186</a> ;	
Rat	<a href="#">192255</a> ; <a href="#">50522</a> ; <a href="#">100912032</a> ; <a href="#">64156</a> ;	<a href="#">P0CG51</a> ; <a href="#">Q63429</a> ; <a href="#">P62982</a> ; <a href="#">P62986</a> ;

**Cellular Localization** Cytoplasm

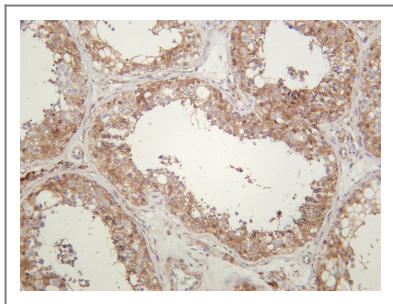
**Tissue specificity** Brain,Epithelium,Fetal brain cortex,Liver,Lung,Lung adenocarcinoma,Lung cancer,Lymphocyte,P

**Function** Function:Protein modifier which can be covalently attached to target lysines either as a monomer or as a lysine-linked polymer. Attachment to proteins as a Lys-48-linked polymer usually leads to their degradation by proteasome. Attachment to proteins as a monomer or as an alternatively linked polymer does not lead to proteasomal degradation and may be required for numerous functions, including maintenance of chromatin structure, regulation of gene expression, stress response, ribosome biogenesis and DNA repair.,miscellaneous:This ribosomal protein is synthesized as a C-terminal extension protein (CEP) of ubiquitin.,miscellaneous:Ubiquitin is synthesized as a polyubiquitin precursor with exact head to tail repeats, the number of repeats differ between species and strains. In some species there is a final amino-acid after the last repeat, here in human a Val. Some ubiquitin genes contain a single copy of ubiquitin fused to a ribosomal protein (either L40 or S27a).,PTM:Several types of polymeric chains can be formed, depending on the lysine used for the assembly.,similarity:Belongs to the ribosomal protein S27Ae family.,similarity:Belongs to the ubiquitin family.,

## Validation Data



Various whole cell lysates were separated by 4-20% SDS-PAGE, and the membrane was blotted with anti-Ubiquitin K48 antibody. The HRP-conjugated Goat anti-Rabbit IgG(H + L) antibody was used to detect the antibody. Lane 1: HEK293 Lane 2: C6 Lane 3: Jurkat Predicted band size: 26kDa Observed band size: 13-250kDa



Human testis was stained with anti-Ubiquitin K48 rabbit antibody

## | Contact information

Orders: [order@immunoway.com](mailto:order@immunoway.com)  
Support: [tech@immunoway.com](mailto:tech@immunoway.com)  
Telephone: 877-594-3616 (Toll Free), 408-747-0185  
Website: <http://www.immunoway.com>  
Address: 2200 Ringwood Ave San Jose, CA 95131 USA



Please scan the QR code  
to access additional  
product information:  
**Ubiquitin K48  
(PT0424R) PT™  
Rabbit mAb**

---

For Research Use Only. Not for Use in Diagnostic Procedures.

[Antibody](#) | [ELISA Kits](#) | [Protein](#) | [Reagents](#)