

## CD10 (PT0044R) PT™ Rabbit mAb

CatalogNo: YM8235 **Recombinant** 

### Key Features

#### Host Species

- Rabbit

#### Reactivity

- Human, Mouse, Rat

#### Applications

- WB, IHC, IF, IP, ELISA

#### MW

- 86kD (Calculated)
- 100kD (Observed)

#### Isotype

- IgG, Kappa

### Recommended Dilution Ratios

IHC 1:200-1:1000

WB 1:1000-1:5000

IF 1:200-1:1000

ELISA 1:5000-1:20000

IP 1:50-1:200

### Storage

**Storage\*** -15°C to -25°C/1 year (Do not lower than -25°C)

**Formulation** PBS, 50% glycerol, 0.05% Proclin 300, 0.05% BSA

### Basic Information

**Clonality** Monoclonal

**Clone Number** PT0044R

### Immunogen Information

**Specificity** Endogenous

## Target Information

**Gene name** MME EPN

**Protein Name** Neprilysin

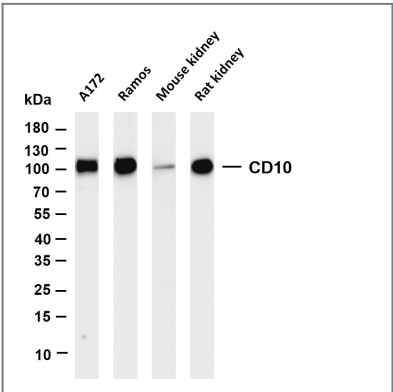
Organism	Gene ID	UniProt ID
Human	<a href="#">4311</a> ;	<a href="#">P08473</a> ;
Mouse	<a href="#">17380</a> ;	<a href="#">Q61391</a> ;
Rat	<a href="#">24590</a> ;	<a href="#">P07861</a> ;

**Cellular Localization** Membrane

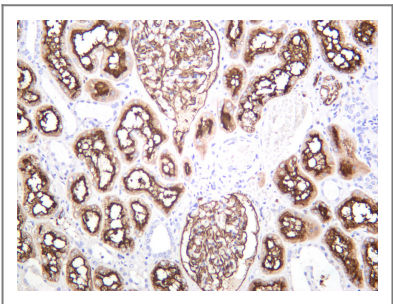
**Tissue specificity** Breast/ Tonsil

**Function** Catalytic activity:Preferential cleavage of polypeptides between hydrophobic residues, particularly with Phe or Tyr at P1'.cofactor:Binds 1 zinc ion per subunit.,Disease:Important cell surface marker in the diagnostic of human acute lymphocytic leukemia.,enzyme regulation:Inhibited in a dose dependent manner by opiorphin.,Function:Thermolysin-like specificity, but is almost confined on acting on polypeptides of up to 30 amino acids. Biologically important in the destruction of opioid peptides such as Met- and Leu-enkephalins by cleavage of a Gly-Phe bond. Involved in the degradation of atrial natriuretic factor (ANF).,similarity:Belongs to the peptidase M13 family.,

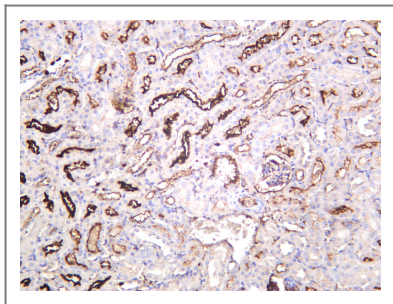
## Validation Data



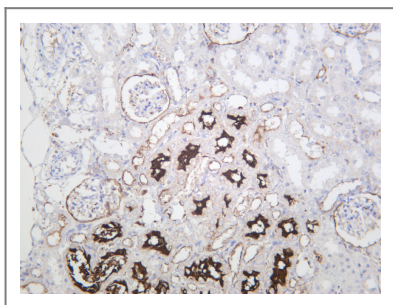
Various whole cell lysates were separated by 4-20% SDS-PAGE, and the membrane was blotted with anti-CD10 antibody. The HRP-conjugated Goat anti-Rabbit IgG(H + L) antibody was used to detect the antibody. Lane 1: A172 Lane 2: Romes Lane 3: Mouse kidney Lane 4: Rat kidney Predicted band size: 86kDa Observed band size: 100kDa



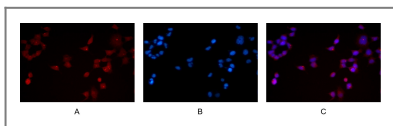
Human kidney was stained with anti-CD10 rabbit antibody



Mouse kidney was stained with anti-CD10 rabbit antibody



Rat kidney was stained with anti-CD10 rabbit antibody



Immunofluorescence analysis of HEK293. Picture A: CD10 antibody (red). Picture B: DAPI (blue). Picture C: Merge of A+B

## Contact information

Orders: [order@immunoway.com](mailto:order@immunoway.com)  
 Support: [tech@immunoway.com](mailto:tech@immunoway.com)  
 Telephone: 877-594-3616 (Toll Free), 408-747-0185  
 Website: <http://www.immunoway.com>  
 Address: 2200 Ringwood Ave San Jose, CA 95131 USA



Please scan the QR code  
 to access additional  
 product information:  
**CD10 (PT0044R)**  
**PT™ Rabbit mAb**

For Research Use Only. Not for Use in Diagnostic Procedures.

[Antibody](#) | [ELISA Kits](#) | [Protein](#) | [Reagents](#)