

## IRE1 $\alpha$ (PT0365R) PT<sup>™</sup> Rabbit mAb

CatalogNo: YM8218 **Recombinant** 

### Key Features

**Host Species**

- Rabbit

**Reactivity**

- Human, Mouse, Rat

**Applications**

- WB, IHC, IF, IP, ELISA

**MW**

- 110kD (Calculated)
- 110kD (Observed)

**Isotype**

- IgG, Kappa

### Recommended Dilution Ratios

**IHC 1:100-1:500****WB 1:2000-1:10000****IF 1:200-1:1000****ELISA 1:5000-1:20000****IP 1:50-1:200**

### Storage

**Storage\*** -15°C to -25°C/1 year (Do not lower than -25°C)**Formulation** PBS, 50% glycerol, 0.05% Proclin 300, 0.05% BSA

### Basic Information

**Clonality** Monoclonal**Clone Number** PT0365R

### Immunogen Information

**Specificity** Endogenous

## | Target Information

**Gene name** ERN1 IRE1

**Protein Name** Serine/threonine-protein kinase/endoribonuclease IRE1

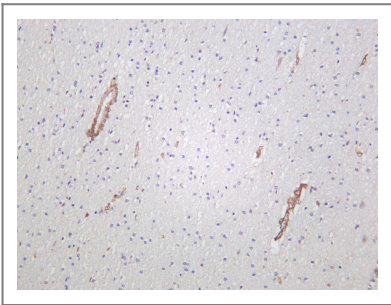
Organism	Gene ID	UniProt ID
Human	<a href="#">2081</a> ;	<a href="#">O75460</a> ;
Mouse	<a href="#">78943</a> ;	<a href="#">Q9EQY0</a> ;

**Cellular Localization** Endoplasmic reticulum membrane

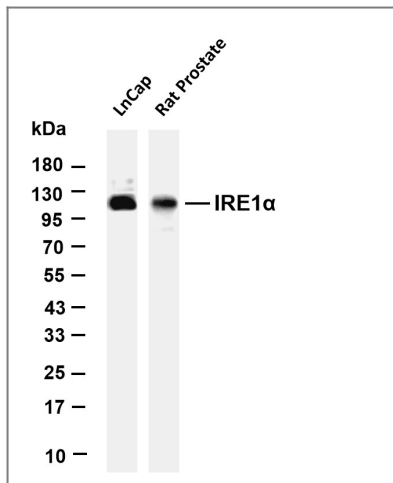
**Tissue specificity** Ubiquitously expressed. High levels observed in pancreatic tissue.

**Function** Catalytic activity:ATP + a protein = ADP + a phosphoprotein.,cofactor:Magnesium.,enzyme regulation:The kinase domain is activated by trans-autophosphorylation. Kinase activity is required for activation of the endoribonuclease domain.,Function:Senses unfolded proteins in the lumen of the endoplasmic reticulum via its N-terminal domain which leads to enzyme auto-activation. The active endoribonuclease domain splices XBP1 mRNA to generate a new C-terminus, converting it into a potent unfolded-protein response transcriptional activator and triggering growth arrest and apoptosis.,PTM:Autophosphorylated.,similarity:Belongs to the protein kinase superfamily. Ser/Thr protein kinase family.,similarity:Contains 1 KEN domain.,similarity:Contains 1 protein kinase domain.,subunit:Homodimer; disulfide-linked. Dimer formation is driven by hydrophobic interactions within the N-terminal luminal domains and stabilized by disulfide bridges. Also binds HSPA5, a negative regulator of the unfolded protein response. This interaction may disrupt homodimerization and prevent activation of ERN1.,tissue specificity:Ubiquitously expressed. High levels observed in pancreatic tissue.,

## | Validation Data



Human brain was stained with anti-IRE1α rabbit antibody



Various whole cell lysates were separated by 4-20% SDS-PAGE, and the membrane was blotted with anti-IRE1 $\alpha$  antibody. The HRP-conjugated Goat anti-Rabbit IgG(H + L) antibody was used to detect the antibody. Lane 1: LnCap Lane 2: Rat Prostate Predicted band size: 110kDa Observed band size: 110kDa

## Contact information

Orders: [order@immunoway.com](mailto:order@immunoway.com)  
 Support: [tech@immunoway.com](mailto:tech@immunoway.com)  
 Telephone: 877-594-3616 (Toll Free), 408-747-0185  
 Website: <http://www.immunoway.com>  
 Address: 2200 Ringwood Ave San Jose, CA 95131 USA



Please scan the QR code to access additional product information:  
**IRE1 $\alpha$  (PT0365R)**  
**PT™ Rabbit mAb**

For Research Use Only. Not for Use in Diagnostic Procedures.

[Antibody](#) | [ELISA Kits](#) | [Protein](#) | [Reagents](#)