

BMP-2 (PT0362R) PT™ Rabbit mAb

CatalogNo: YM8215 **Recombinant** 

Key Features

Host Species

- Rabbit

Reactivity

- Human, Mouse, Rat

Applications

- WB, IHC, IF, ELISA

MW

- 45kD, 13kD (Calculated)
- 30kD, 13kD (Observed)

Isotype

- IgG, Kappa

Storage

Storage* -15°C to -25°C/1 year (Do not lower than -25°C)**Formulation** PBS, 50% glycerol, 0.05% Proclin 300, 0.05% BSA

Recommended Dilution Ratios

IHC 1:200-1:1000**WB 1:1000-1:5000****IF 1:200-1:1000****ELISA 1:5000-1:20000**

Basic Information

Clonality Monoclonal**Clone Number** PT0362R

Immunogen Information

Specificity Endogenous

Target Information

Gene name BMP2

Protein Name Bone morphogenetic protein 2

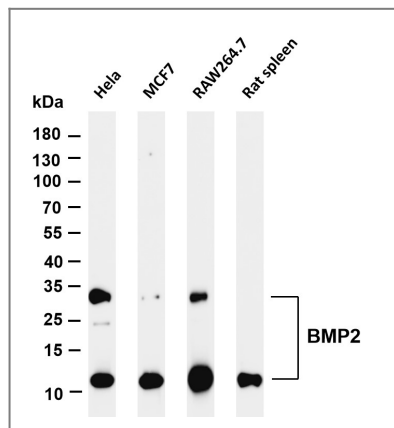
| Organism | Gene ID | UniProt ID |
|----------|-------------------------|--------------------------|
| Human | 650 ; | P12643 ; |
| Mouse | 12156 ; | P21274 ; |
| Rat | 29373 ; | P49001 ; |

Cellular Localization Secreted

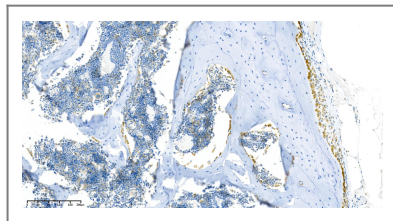
Tissue specificity Particularly abundant in lung, spleen and colon and in low but significant levels in heart, brain, placenta, liver, skeletal muscle, kidney, pancreas, prostate, ovary and small intestine.

Function Function:Induces cartilage and bone formation.,online information:Bone morphogenetic protein 2 entry,similarity:Belongs to the TGF-beta family.,subunit:Homodimer; disulfide-linked. Interacts with GREM2 (By similarity) and SOSTDC1.,tissue specificity:Particularly abundant in lung, spleen and colon and in low but significant levels in heart, brain, placenta, liver, skeletal muscle, kidney, pancreas, prostate, ovary and small intestine.,

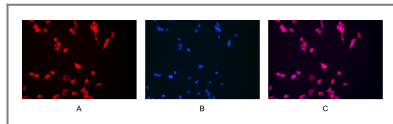
Validation Data



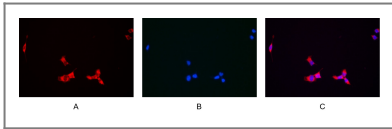
Various whole cell lysates were separated by 4-20% SDS-PAGE, and the membrane was blotted with anti-BMP2 antibody. The HRP-conjugated Goat anti-Rabbit IgG(H + L) antibody was used to detect the antibody. Lane 1: HeLa Lane 2: MCF7 Lane 3: RAW264.7 Lane 4: Rat spleen Predicted band size: 45,13kDa Observed band size: 30,13kDa



Rat spine was stained with anti-BMP2 Rabbit antibody



Immunofluorescence analysis of HEK293. Picture A: BMP2 antibody (red). Picture B: DAPI (blue). Picture C: Merge of A+B



Immunofluorescence analysis of HEK293. Picture A: BMP2 antibody (red).
Picture B: DAPI (blue). Picture C: Merge of A+B

Contact information

Orders: order@immunoway.com
Support: tech@immunoway.com
Telephone: 877-594-3616 (Toll Free), 408-747-0185
Website: <http://www.immunoway.com>
Address: 2200 Ringwood Ave San Jose, CA 95131 USA



Please scan the QR code
to access additional
product information:
BMP-2 (PT0362R)
PT™ Rabbit mAb

For Research Use Only. Not for Use in Diagnostic Procedures.

[Antibody](#) | [ELISA Kits](#) | [Protein](#) | [Reagents](#)