

## PKC $\alpha$ (Phospho Thr638) (PT0727R) PT<sup>®</sup> Rabbit mAb

CatalogNo: YM8105 **Recombinant** 

### Key Features

**Host Species**

- Rabbit

**Reactivity**

- Human, Mouse, Rat,

**Applications**

- WB, IHC, IF, IP, ELISA

**MW**

- 77kD (Calculated)
- 77kD (Observed)

**Isotype**

- IgG, Kappa

### Recommended Dilution Ratios

**IHC 1:200-1:1000****WB 1:1000-1:5000****IF 1:200-1:1000****ELISA 1:5000-1:20000****IP 1:50-1:200,**

### Storage

**Storage\*** -15°C to -25°C/1 year (Do not lower than -25°C)**Formulation** PBS, 50% glycerol, 0.05% Proclin 300, 0.05% BSA

### Basic Information

**Clonality** Monoclonal**Clone Number** PT0727R

### Immunogen Information

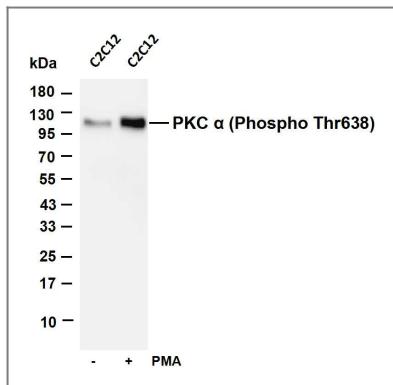
**Sequence** Stromal interaction molecule 1

**Specificity** Phospho-PKC α (T638) Antibody detects endogenous levels of PKC α protein only when phosphorylated at T638. The name of modified sites may be influenced by many factors, such as species (the modified site was not originally found in human samples) and the change of protein sequence (the previous protein sequence is incomplete, and the protein sequence may be prolonged with the development of protein sequencing technology). When naming, we will use the "numbers" in historical reference to keep the sites consistent with the reports. The antibody binds to the following modification sequence (lowercase letters are modification sites):VLtPP

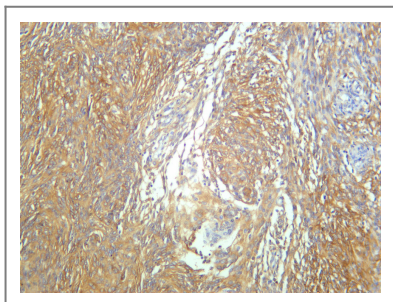
## | Target Information

Gene name	PRKCA		
Protein Name	Protein kinase C alpha type		
	Organism	Gene ID	UniProt ID
	Human	<a href="#">6786</a> ;	<a href="#">P17252</a> ;
	Mouse	<a href="#">18750</a> ;	<a href="#">P20444</a> ;
	Rat	<a href="#">361618</a> ;	<a href="#">P84903</a> ;
Cellular Localization	Cytoplasm . Cell membrane ; Peripheral membrane protein . Mitochondrion membrane ; Peripheral membrane protein . Nucleus .		
Tissue specificity	Ubiquitously expressed in various human primary cells and tumor cell lines.		
Function	Catalytic activity:ATP + a protein = ADP + a phosphoprotein.,cofactor:Binds 3 calcium ions per subunit. The ions are bound to the C2 domain.,Function:PKC is activated by diacylglycerol which in turn phosphorylates a range of cellular proteins. PKC also serves as the receptor for phorbol esters, a class of tumor promoters.,Function:This is a calcium-activated, phospholipid-dependent, serine- and threonine-specific enzyme. May play a role in cell motility by phosphorylating CSPG4.,similarity:Belongs to the protein kinase superfamily.,similarity:Belongs to the protein kinase superfamily. AGC Ser/Thr protein kinase family. PKC subfamily.,similarity:Contains 1 AGC-kinase C-terminal domain.,similarity:Contains 1 C2 domain.,similarity:Contains 1 protein kinase domain.,similarity:Contains 2 phorbol-ester/DAG-type zinc fingers.,subunit:Interacts with ADAP1/CENTA1, CSPG4 and PRKCABP. Binds to SDPR in the presence of phosphatidylserine.,		

## | Validation Data



Various whole cell lysates were separated by 4-20% SDS-PAGE, and the membrane was blotted with anti-PKC  $\alpha$  (Phospho Thr638) antibody. The HRP-conjugated Goat anti-Rabbit IgG(H + L) antibody was used to detect the antibody. Lane 1: C2C12 Lane 2: C2C12 was treated with Phorbol 12-myristate 13-acetate(200 nM) for 30 minutes Predicted band size: 77kDa Observed band size: 77kDa



Human meningioma was stained with anti-PKC  $\alpha$  (Phospho Thr638) rabbit antibody

## Contact information

Orders: [order@immunoway.com](mailto:order@immunoway.com)  
 Support: [tech@immunoway.com](mailto:tech@immunoway.com)  
 Telephone: 877-594-3616 (Toll Free), 408-747-0185  
 Website: <http://www.immunoway.com>  
 Address: 2200 Ringwood Ave San Jose, CA 95131 USA



Please scan the QR code to access additional product information:  
**PKC  $\alpha$  (Phospho Thr638) (PT0727R)**  
**PT® Rabbit mAb**

For Research Use Only. Not for Use in Diagnostic Procedures.

[Antibody](#) | [ELISA Kits](#) | [Protein](#) | [Reagents](#)