

IFITM3 (PT0253R) PT™ Rabbit mAb

CatalogNo: YM8092 **Recombinant** 

Key Features

Host Species

- Rabbit

Reactivity

- Human

Applications

- WB,IHC,IF,ELISA

MW

- 14kD (Calculated)
- 14kD (Observed)

Isotype

- IgG,Kappa

Recommended Dilution Ratios

IHC 1:100-200

WB 1:500-2000

IF 1:200-1000

ELISA 1:5000-20000

Storage

Storage* -15°C to -25°C/1 year(Do not lower than -25°C)

Formulation PBS, 50% glycerol, 0.05% Proclin 300, 0.05%BSA

Basic Information

Clonality Monoclonal

Clone Number PT0253R

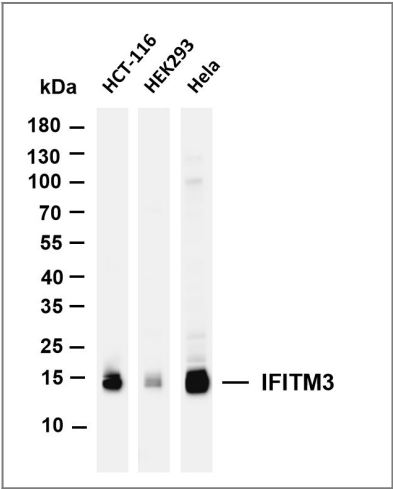
Immunogen Information

Specificity Endogenous

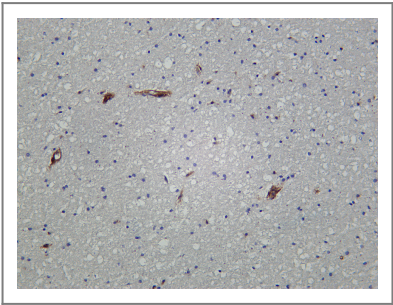
Target Information

| | | | |
|-----------------------|--|------------------------|-------------------------|
| Gene name | IFITM3 | | |
| Protein Name | Interferon-induced transmembrane protein 3 | | |
| | Organism | Gene ID | UniProt ID |
| | Human | 2260; | Q01628; |
| | Mouse | | Q9CQW9; |
| | Rat | 79114; | Q04589; |
| Cellular Localization | Membranous | | |
| Tissue specificity | Detected in astrocytoma, neuroblastoma and adrenal cortex cell lines. Some isoforms are detected in foreskin fibroblast cell lines, however isoform 17, isoform 18 and isoform 19 are not detected in these cells. | | |
| Function | induction:By alpha and gamma interferons.,similarity:Belongs to the CD225 family., | | |

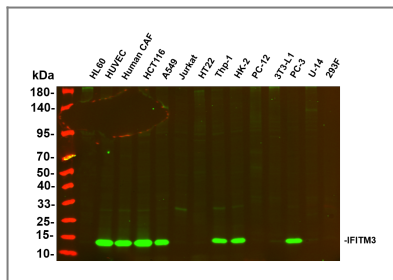
| Validation Data



Various whole cell lysates were separated by 4-20% SDS-PAGE, and the membrane was blotted with anti-IFITM3 antibody. The HRP-conjugated Goat anti-Rabbit IgG(H + L) antibody was used to detect the antibody. Lane 1: HCT-116 Lane 2: HEK293 Lane 3: HeLa Predicted band size: 14kDa Observed band size: 14kDa



Human brain was stained with Anti-IFITM3 rabbit antibody



Various whole cell lysates were separated by 4-20% SDS-PAGE, and the primary antibody was used at 4°C, over night with a 1:2500 dilution. The Dylight 800-conjugated Goat anti-Rabbit antibody (Cat:RS23920) was used to detect the antibody. Lane1: HL60 - Human promyelocytic leukemia cell Lane2: HUVEC - Human umbilical vein endothelial cell Lane3: Human CAF - Human cancer-associated fibroblast Lane4: HCT116 - Human colorectal carcinoma Lane5: A549 - Human lung carcinoma Lane6: Jurkat - Human T lymphocyte leukemia Lane7: HT22 - Mouse hippocampal neuronal Lane8: Thp-1 - Human monocytic leukemia Lane9: HK-2 - Human proximal tubular epithelial Lane10: PC-12 - Rat adrenal pheochromocytoma Lane11: 3T3-L1 - Mouse embryonic fibroblast Lane12: PC-3 - Human prostate adenocarcinoma Lane13: U-14 - Mouse cervical carcinoma Lane14: 293F - HEK293 derivative, adapted for suspension culture Predicted band size: 14kDa Observed band size: 14kDa

Contact information

Orders: order@immunoway.com
 Support: tech@immunoway.com
 Telephone: 877-594-3616 (Toll Free), 408-747-0185
 Website: <http://www.immunoway.com>
 Address: 2200 Ringwood Ave San Jose, CA 95131 USA



Please scan the QR code to access additional product information:
IFITM3 (PT0253R)
PT™ Rabbit mAb

For Research Use Only. Not for Use in Diagnostic Procedures.

[Antibody](#) | [ELISA Kits](#) | [Protein](#) | [Reagents](#)