

LAMP1 (PT0104R) PT™ Rabbit mAb

CatalogNo: YM8060

Recombinant KD/KO Validated 

Key Features

Host Species

- Rabbit

Reactivity

- Human

Applications

- WB,IHC,IF,ELISA

MW

- 45kD (Calculated)
- 110kD (Observed)

Isotype

- IgG,Kappa

Storage

Storage* -15°C to -25°C/1 year(Do not lower than -25°C)

Formulation PBS, 50% glycerol, 0.05% Proclin 300, 0.05%BSA

Recommended Dilution Ratios

IHC 1:200-1:1000

WB 1:1000-1:5000

IF 1:200-1:1000

ELISA 1:5000-1:20000

Basic Information

Clonality Monoclonal

Clone Number PT0104R

Immunogen Information

Immunogen The specific immunogen used to produce this antibody is proprietary information.

Specificity Endogenous

| Target Information

Gene name LAMP1

Protein Name Lysosome-associated membrane glycoprotein 1

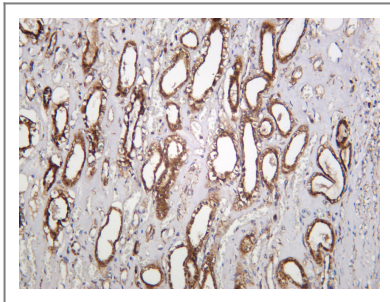
Organism	Gene ID	UniProt ID
Human	3916;	P11279;
Mouse		P11438;
Rat	25328;	P14562;

Cellular Localization Membrane

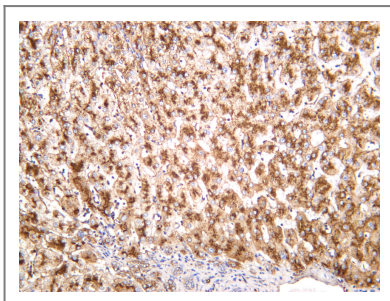
Tissue specificity Brain,Liver,Pancreas,Placenta,Plasma,Testis,

Function Function:Presents carbohydrate ligands to selectins. Also implicated in tumor cell metastasis.,PTM:O- and N-glycosylated; some of the 18 N-linked glycans are polylactosaminoglycans.,similarity:Belongs to the LAMP family.,subcellular location:This protein shuttles between lysosomes, endosomes, and the plasma membrane.,

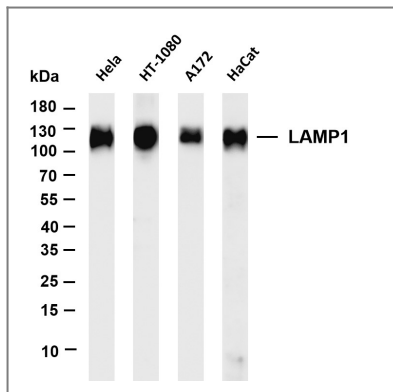
| Validation Data



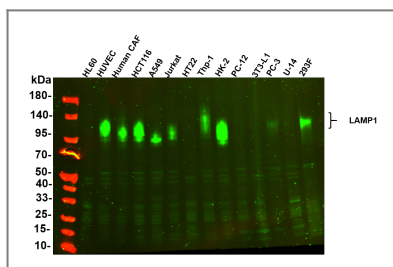
Human kidney was stained with anti-LAMP1 rabbit antibody



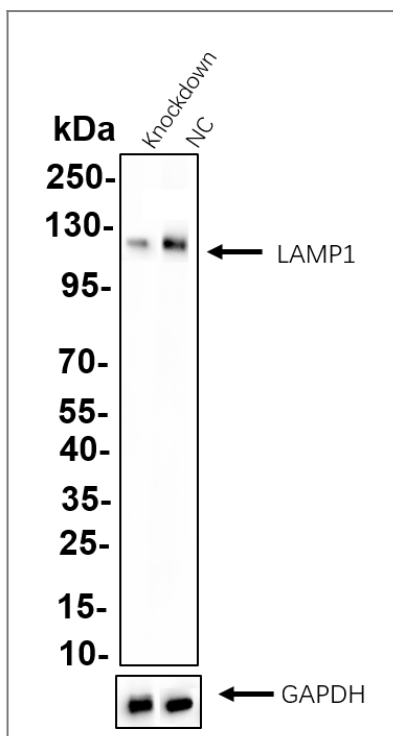
Human liver was stained with anti-LAMP1 rabbit antibody



Various whole cell lysates were separated by 4-20% SDS-PAGE, and the membrane was blotted with anti-LAMP1 (PT0104R) antibody. The HRP-conjugated Goat anti-Rabbit IgG (H + L) antibody was used to detect the antibody. Lane 1: HeLa Lane 2: HT-1080 Lane 3: A172 Lane 4: HaCat
 Predicted band size: 45kDa Observed band size: 110kDa



Various whole cell lysates were separated by 4-20% SDS-PAGE, and the primary antibody was used at 4°C over night with a 1:2500 dilution . The Dylight 800-conjugated Goat anti-Rabbit antibody (Cat:RS23920) was used to detect the antibody. Lane1: HL60 - Human promyelocytic leukemia cell Lane2: HUVEC - Human umbilical vein endothelial cell Lane3: Human CAF - Human cancer-associated fibroblast Lane4: HCT116 - Human colorectal carcinoma Lane5: A549 - Human lung carcinoma Lane6: Jurkat - Human T lymphocyte leukemia Lane7: HT22 - Mouse hippocampal neuronal Lane8: Thp-1 - Human monocytic leukemia Lane9: HK-2 - Human proximal tubular epithelial Lane10: PC-12 - Rat adrenal pheochromocytoma Lane11: 3T3-L1 - Mouse embryonic fibroblast Lane12: PC-3 - Human prostate adenocarcinoma Lane13: U-14 - Mouse cervical carcinoma Lane14: 293F - HEK293 derivative, adapted for suspension culture
 Predicted band size: 110kDa Observed band size: 110kDa



Western blot analysis of lysates from HeLa WT and knockdown cell. Cell lysates were separated by 4-20% SDS-PAGE, and the membrane was blotted with LAMP1 (PT0104R) rabbit mAb. The HRP-conjugated Goat anti-Rabbit IgG (H + L) antibody was used to detect the antibody.

Contact information

Orders: order@immunoway.com
Support: tech@immunoway.com
Telephone: 877-594-3616 (Toll Free), 408-747-0185
Website: http://www.immunoway.com
Address: 2200 Ringwood Ave San Jose, CA 95131 USA



Please scan the QR code
to access additional
product information:
LAMP1 (PT0104R)
PT™ Rabbit mAb

For Research Use Only. Not for Use in Diagnostic Procedures.

[Antibody](#) | [ELISA Kits](#) | [Protein](#) | [Reagents](#)