

## GSK3 $\beta$ (Phospho Ser9) (PT0078R) PT<sup>®</sup> Rabbit mAb

CatalogNo: YM8041 **Recombinant** 

### Key Features

**Host Species**

- Rabbit

**Reactivity**

- Human, Mouse,

**Applications**

- WB, IHC, IF, IP, ELISA

**MW**

- 46kD (Calculated)
- 46kD (Observed)

**Isotype**

- IgG, Kappa

### Recommended Dilution Ratios

**IHC 1:200-1000****WB 1:1000-5000****IF 1:200-1000****ELISA 1:5000-20000****IP 1:50-200**

### Storage

**Storage\*** -15°C to -25°C/1 year (Do not lower than -25°C)**Formulation** PBS, 50% glycerol, 0.05% Proclin 300, 0.05% BSA

### Basic Information

**Clonality** Monoclonal**Clone Number** PT0078R

### Immunogen Information

**Specificity** This antibody detects endogenous levels of GSK3 $\beta$  only when phosphorylated at Ser9. This antibody does not recognize phosphorylated at other sites.

## Target Information

**Gene name** GSK3B

**Protein Name** Glycogen synthase kinase-3 beta

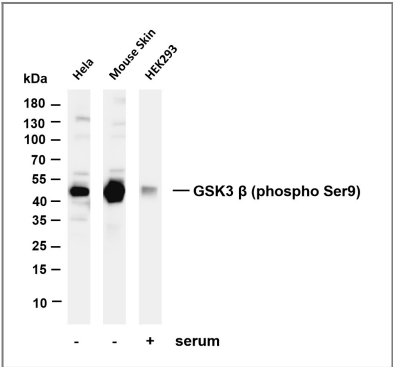
Organism	Gene ID	UniProt ID
Human	<a href="#">2932</a> ;	<a href="#">P49841</a> ;
Mouse	<a href="#">56637</a> ;	<a href="#">Q9WV60</a> ;
Rat	<a href="#">84027</a> ;	<a href="#">P18266</a> ;

**Cellular Localization** Cytoplasmic, Membranous

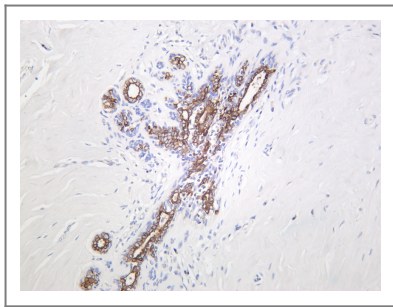
**Tissue specificity** Expressed in testis, thymus, prostate and ovary and weakly expressed in lung, brain and kidney. Colocalizes with EIF2AK2/PKR and TAU in the Alzheimer disease (AD) brain.

**Function** Catalytic activity:ATP + [tau protein] = ADP + [tau protein] phosphate.,enzyme regulation:Inhibited when phosphorylated by AKT1.,Function:Participates in the Wnt signaling pathway. Implicated in the hormonal control of several regulatory proteins including glycogen synthase, MYB and the transcription factor JUN. Phosphorylates JUN at sites proximal to its DNA-binding domain, thereby reducing its affinity for DNA. Phosphorylates MUC1 in breast cancer cells, and decreases the interaction of MUC1 with CTNNB1/beta-catenin.,PTM:Phosphorylated by AKT1 and ILK1.,similarity:Belongs to the protein kinase superfamily.,similarity:Belongs to the protein kinase superfamily. CMGC Ser/Thr protein kinase family. GSK-3 subfamily.,similarity:Contains 1 protein kinase domain.,subunit:Monomer (By similarity). Interacts with CABYR, MUC1, NIN and PRUNE.,tissue specificity:Expressed in testis, thymus, prostate and ovary and weakly expressed in lung, brain and kidney.,

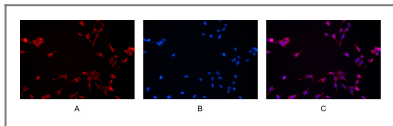
## Validation Data



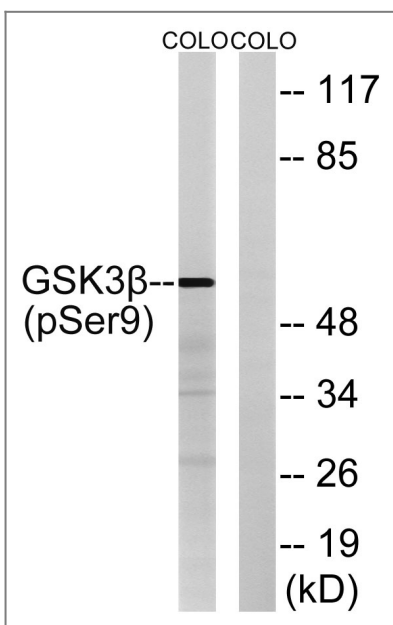
Various whole cell lysates were separated by 4-20% SDS-PAGE, and the membrane was blotted with anti-GSK3  $\beta$  (phospho Ser9) antibody. The HRP-conjugated Goat anti-Rabbit IgG(H + L) antibody was used to detect the antibody. Lane 1: HeLa Lane 2: Mouse skin Lane 3: HEK293 treated with serum in 30 minutes Predicted band size: 46kDa Observed band size: 46kDa



Human breast carcinoma was stained with Anti-GSK3  $\beta$  (phospho Ser9) rabbit antibody



Immunofluorescence analysis of HEK293. Picture A: GSK3  $\beta$  antibody (red). Picture B: DAPI (blue). Picture C: Merge of A+B



Western blot analysis of GSK3 $\beta$  (Phospho-Ser9) Antibody. The lane on the right is blocked with the GSK3 $\beta$  (Phospho-Ser9) peptide.

## Contact information

Orders: [order@immunoway.com](mailto:order@immunoway.com)  
 Support: [tech@immunoway.com](mailto:tech@immunoway.com)  
 Telephone: 877-594-3616 (Toll Free), 408-747-0185  
 Website: <http://www.immunoway.com>  
 Address: 2200 Ringwood Ave San Jose, CA 95131 USA



Please scan the QR code to access additional product information:  
**GSK3 $\beta$  (Phospho Ser9) (PT0078R)**  
**PT® Rabbit mAb**