

## BID (PT0386R) PT™ Rabbit mAb

CatalogNo: YM8036 **Recombinant** 

### Key Features

**Host Species**

- Rabbit

**Reactivity**

- Human,

**Applications**

- WB,IHC,IF,IP,ELISA

**MW**

- 22kD (Calculated)
- 22kD (Observed)

**Isotype**

- IgG,Kappa

### Recommended Dilution Ratios

**IHC 1:200-1000****WB 1:1000-5000****IF 1:200-1000****ELISA 1:5000-20000****IP 1:50-200**

### Storage

**Storage\*** -15°C to -25°C/1 year(Do not lower than -25°C)**Formulation** PBS, 50% glycerol, 0.05% Proclin 300, 0.05%BSA

### Basic Information

**Clonality** Monoclonal**Clone Number** PT0386R

### Immunogen Information

**Specificity** Endogenous

## Target Information

**Gene name** BID

**Protein Name** BH3-interacting domain death agonist

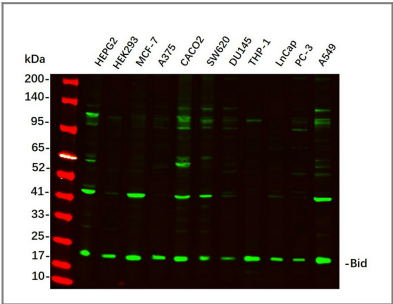
Organism	Gene ID	UniProt ID
Human	<a href="#">4513</a> ;	<a href="#">P55957</a> ;

**Cellular Localization** Cytoplasm . Mitochondrion membrane . Mitochondrion outer membrane . When uncleaved, it is predominantly cytoplasmic. .; [BH3-interacting domain death agonist p15]: Mitochondrion membrane . Translocates to mitochondria as an integral membrane protein. .; [BH3-interacting domain death agonist p13]: Mitochondrion membrane . Associated with the mitochondrial membrane. .; [Isoform 1]: Cytoplasm .; [Isoform 3]: Cytoplasm .; [Isoform 2]: Mitochondrion membrane . A significant proportion of isoform 2 localizes to mitochondria, it may be cleaved constitutively. .

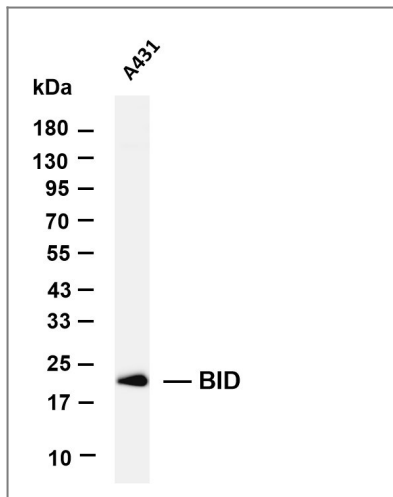
**Tissue specificity** Blood,Bone fossil,Bones,Breast cancer,Distant normal tissue,Endometrial ade

**Function** Domain: Intact BH3 motif is required by BIK, BID, BAK, BAD and BAX for their pro-apoptotic activity and for their interaction with anti-apoptotic members of the Bcl-2 family.,Function: The major proteolytic product p15 BID allows the release of cytochrome c (By similarity). Isoform 1, isoform 2 and isoform 4 induce ICE-like proteases and apoptosis. Isoform 3 does not induce apoptosis. Counters the protective effect of Bcl-2.,PTM: Phosphorylated upon DNA damage, probably by ATM or ATR.,PTM: TNF-alpha induces a caspase-mediated cleavage of p22 BID into a major p15 and minor p13 and p11 products.,subcellular location: A significant proportion of isoform 2 localizes to mitochondria, it may be cleaved constitutively.,subcellular location: Associated with the mitochondrial membrane.,subcellular location: Translocates to mitochondria as an integral membrane protein.,subcellular location: When uncleaved, it is predominantly cytoplasmic.,subunit: Forms heterodimers either with the pro-apoptotic protein BAX or the anti-apoptotic protein Bcl-2.,tissue specificity: Isoforms 2 and 3 are expressed in spleen, bone marrow, cerebral and cerebellar cortex. Isoform 2 is expressed in spleen, pancreas and placenta (at protein level). Isoform 3 is expressed in lung, pancreas and spleen (at protein level). Isoform 4 is expressed in lung and pancreas (at protein level).,

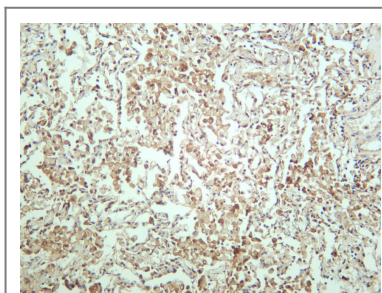
## Validation Data



Western Blot analysis using various cell lysate, Proteins were separated by 4-20% SDS-PAGE, and the membrane was blotted with Bid Rabbit mAb diluted at 1:2000. Secondary :Dylight 800, Goat Anti Rabbit IgG(RS23920 1:10000)



Various whole cell lysates were separated by 4-20% SDS-PAGE, and the membrane was blotted with anti-BID antibody. The HRP-conjugated Goat anti-Rabbit IgG (H + L) antibody was used to detect the antibody. Lane 1: A431 Predicted band size: 22kDa Observed band size: 22kDa



Human lung was stained with anti-BID rabbit antibody

## Contact information

Orders: [order@immunoway.com](mailto:order@immunoway.com)  
 Support: [tech@immunoway.com](mailto:tech@immunoway.com)  
 Telephone: 877-594-3616 (Toll Free), 408-747-0185  
 Website: <http://www.immunoway.com>  
 Address: 2200 Ringwood Ave San Jose, CA 95131 USA



Please scan the QR code to access additional product information:  
**BID (PT0386R) PT™**  
**Rabbit mAb**

For Research Use Only. Not for Use in Diagnostic Procedures.

[Antibody](#) | [ELISA Kits](#) | [Protein](#) | [Reagents](#)