

Cytokeratin 19 (ABT010) Mouse mAb

CatalogNo: YM4949

Key Features

Host Species

- Mouse

Reactivity

- Human

Applications

- IHC, WB, IF, ELISA

MW

- 44kD (Calculated)
- 44kD (Observed)

Isotype

- IgG1, Kappa

Recommended Dilution Ratios

IHC 1:200-1000

WB 1:500-2000. IF 1:100-500. ELISA 1:1000-5000.

Storage

Storage* -15°C to -25°C/1 year (Do not lower than -25°C)

Formulation PBS, 50% glycerol, 0.05% Proclin 300, 0.05% BSA

Basic Information

Clonality Monoclonal

Clone Number ABT010

Immunogen Information

Immunogen Recombinant protein

Specificity This antibody detects endogenous levels of Cytokeratin 19 protein.

Target Information

Gene name KRT19

Protein Name CK19

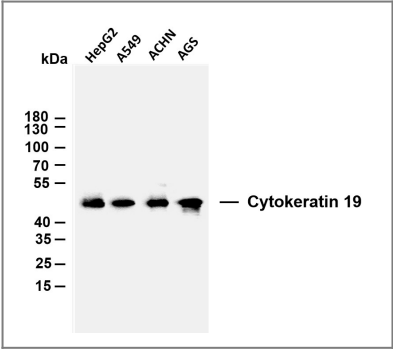
Organism	Gene ID	UniProt ID
Human	3880 ;	P08727 ;

Cellular Localization Membranous, Cytoplasmic

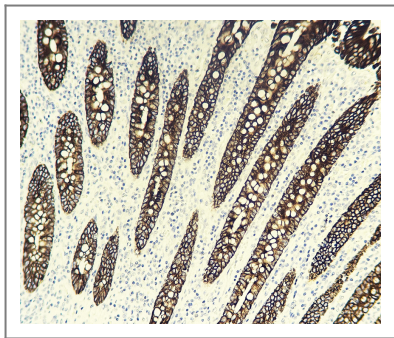
Tissue specificity Expressed in a defined zone of basal keratinocytes in the deep outer root sheath of hair follicles. Also observed in sweat gland and mammary gland ductal and secretory cells, bile ducts, gastrointestinal tract, bladder urothelium, oral epithelia, esophagus, ectocervical epithelium (at protein level). Expressed in epidermal basal cells, in nipple epidermis and a defined region of the hair follicle. Also seen in a subset of vascular wall cells in both the veins and artery of human umbilical cord, and in umbilical cord vascular smooth muscle. Observed in muscle fibers accumulating in the costameres of myoplasm at the sarcolemma in structures that contain dystrophin and spectrin.

Function developmental stage:Present in hair follicles at all stages of development.,Domain:This keratin differs from all other IF proteins in lacking the C-terminal tail domain.,Function:Involved in the organization of myofibers. Together with KRT8, helps to link the contractile apparatus to dystrophin at the costameres of striated muscle.,miscellaneous:There are two types of cytoskeletal and microfibrillar keratin: I (acidic; 40-55 kDa) and II (neutral to basic; 56-70 kDa).,similarity:Belongs to the intermediate filament family.,subunit:Heterotetramer of two type I and two type II keratins. Interacts with PNN and the actin-binding domain of DMD. Interacts with HCV core protein.,tissue specificity:Expressed in a defined zone of basal keratinocytes in the deep outer root sheath of hair follicles. Also observed in sweat gland and mammary gland ductal and secretory cells, bile ducts, gastrointestinal tract, bladder urothelium, oral epithelia, esophagus, ectocervical epithelium (at protein level). Expressed in epidermal basal cells, in nipple epidermis and a defined region of the hair follicle. Also seen in a subset of vascular wall cells in both the veins and artery of human umbilical cord, and in umbilical cord vascular smooth muscle. Observed in muscle fibers accumulating in the costameres of myoplasm at the sarcolemma in structures that contain dystrophin and spectrin.,

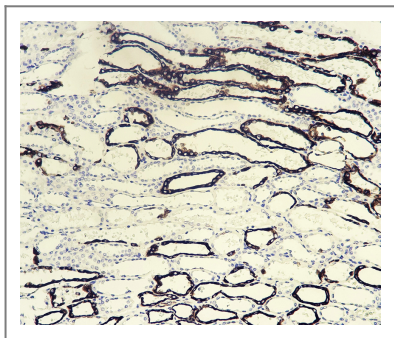
Validation Data



Various whole cell lysates were separated by 10% SDS-PAGE, and the membrane was blotted with anti-Cytokeratin 19 (ABT010) antibody. The HRP-conjugated Goat anti-Rabbit IgG(H + L) antibody was used to detect the antibody. Lane 1: HepG2 Lane 2: A549 Lane 3: ACHN Lane 4: AGS Predicted band size: 44kDa Observed band size: 44kDa



Human appendix tissue was stained with Anti-Cytokeratin 19 (ABT010) Antibody



Human kidney tissue was stained with Anti-Cytokeratin 19 (ABT010) Antibody

| Contact information

Orders: order@immunoway.com
Support: tech@immunoway.com
Telephone: 877-594-3616 (Toll Free), 408-747-0185
Website: <http://www.immunoway.com>
Address: 2200 Ringwood Ave San Jose, CA 95131 USA



Please scan the QR code to access additional product information:
Cytokeratin 19 (ABT010) Mouse mAb

For Research Use Only. Not for Use in Diagnostic Procedures.

[Antibody](#) | [ELISA Kits](#) | [Protein](#) | [Reagents](#)