

## Claudin 4 (ABT-CLD4) Mouse mAb

CatalogNo: YM4922

### Key Features

#### Host Species

- Mouse

#### Reactivity

- Human,

#### Applications

- IHC, WB, IF, ELISA

#### MW

- 22kD (Calculated)  
22kD (Observed)

#### Isotype

- IgG2b, Kappa

### Recommended Dilution Ratios

**IHC 1:200-1000**

**WB 1:500-2000**

**IF 1:100-500**

**ELISA 1:1000-5000**

### Storage

**Storage\*** -15°C to -25°C/1 year (Do not lower than -25°C)

**Formulation** PBS, 50% glycerol, 0.05% Proclin 300, 0.05% BSA

### Basic Information

**Clonality** Monoclonal

**Clone Number** ABT-CLD4

### Immunogen Information

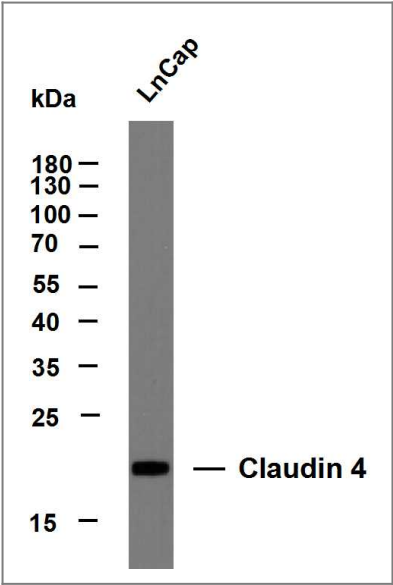
**Immunogen** Synthesized peptide derived from human Claudin 4 AA range: 150-209

**Specificity** This antibody detects endogenous levels of Claudin 4 protein.

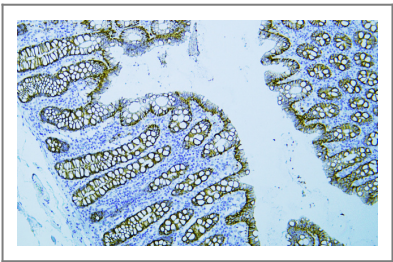
## Target Information

Gene name	CLDN4 CPER CPETR1 WBSCR8		
Protein Name	Claudin-4 (Clostridium perfringens enterotoxin receptor) (CPE-R) (CPE-receptor) (Williams-Beuren syndrome chromosomal region 8 protein)		
	Organism	Gene ID	UniProt ID
	Human	<a href="#">1364</a> ;	<a href="#">O14493</a> ;
Cellular Localization	Membranous		
Tissue specificity	Colon,Fetal brain,Trachea,		
Function	Disease:Haploinsufficiency of CLDN4 may be the cause of certain cardiovascular and musculo-skeletal abnormalities observed in Williams-Beuren syndrome (WBS), a rare developmental disorder. It is a contiguous gene deletion syndrome involving genes from chromosome band 7q11.23.,Function:Plays a major role in tight junction-specific obliteration of the intercellular space.,similarity:Belongs to the claudin family.,subunit:Directly interacts with TJP1/ZO-1, TJP2/ZO-2 and TJP3/ZO-3.,		

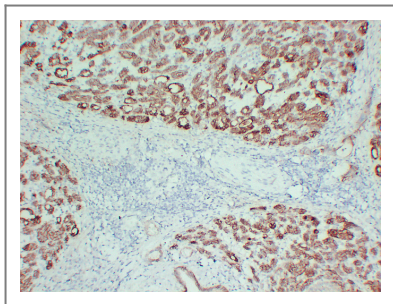
## Validation Data



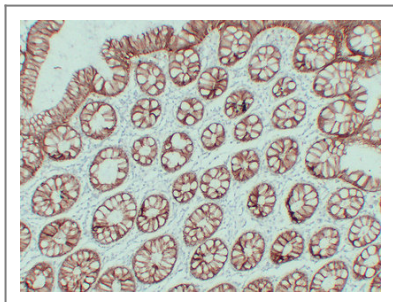
Whole cell lysates were separated by 12% SDS-PAGE, and the membrane was blotted with anti-Claudin 4(ABT-CLD4) antibody. The HRP-conjugated Goat anti-Mouse IgG(H + L) antibody was used to detect the antibody. Lane 1: LnCap



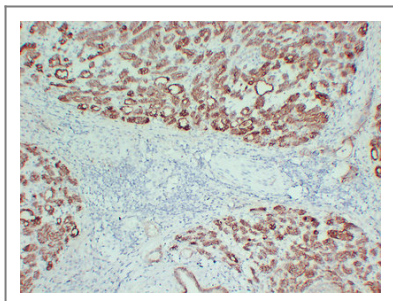
Human colon tissue was stained with Anti-Claudin 4 (ABT-CLD4) Antibody



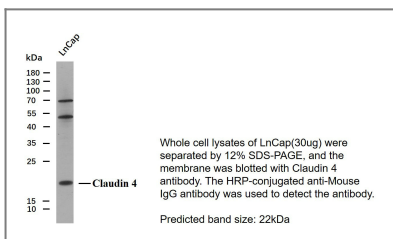
Human pancreatic carcinoma tissue was stained with Anti-Claudin 4 (ABT-CLD4) Antibody



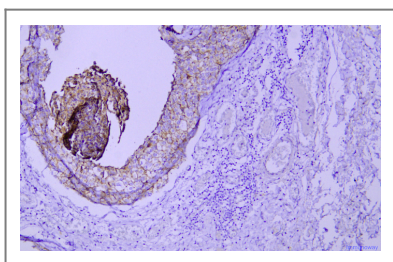
Immunohistochemical analysis of paraffin-embedded Colon. 1, Antibody was diluted at 1:200(4° overnight). 2, TRIS-EDTA of pH8.0 was used for antigen retrieval. 3,Secondary antibody was diluted at 1:200(room temperature, 30min).



Immunohistochemical analysis of paraffin-embedded Pancreatic carcinoma. 1, Antibody was diluted at 1:200(4° overnight). 2, TRIS-EDTA of pH8.0 was used for antigen retrieval. 3,Secondary antibody was diluted at 1:200(room temperature, 30min).



Western blot analysis of Claudin 4Antibody at 1:1000 dilution.



Immunohistochemical analysis of paraffin-embedded human mammary cancer Antibody was diluted at 1:200(4° overnight).

## Contact information

Orders: order@immunoway.com  
 Support: tech@immunoway.com  
 Telephone: 877-594-3616 (Toll Free), 408-747-0185  
 Website: <http://www.immunoway.com>  
 Address: 2200 Ringwood Ave San Jose, CA 95131 USA



Please scan the QR code to access additional product information:  
**Claudin 4 (ABT-CLD4) Mouse mAb**

