

Ki-67 (ABT001) Mouse mAb

CatalogNo: YM4905

| Key Features

Host Species

- Mouse

Reactivity

- Human,

Applications

- IHC, WB, IF, ELISA

MW

- 359kD (Calculated)
- 359kD (Observed)

Isotype

- IgG2b, Kappa

| Recommended Dilution Ratios

IHC 1:200-1000

WB 1:500-2000

IF 1:100-500

ELISA 1:1000-5000

| Storage

Storage* -15°C to -25°C/1 year (Do not lower than -25°C)

Formulation PBS, 50% glycerol, 0.05% Proclin 300, 0.05% BSA

| Basic Information

Clonality Monoclonal

Clone Number ABT001

| Immunogen Information

Immunogen Synthesized peptide derived from human Ki-67 AA range: 1200-1400

Specificity The antibody can specifically recognize human Ki-67 protein.

| Target Information

Gene name MKI67

Protein Name Ki 67

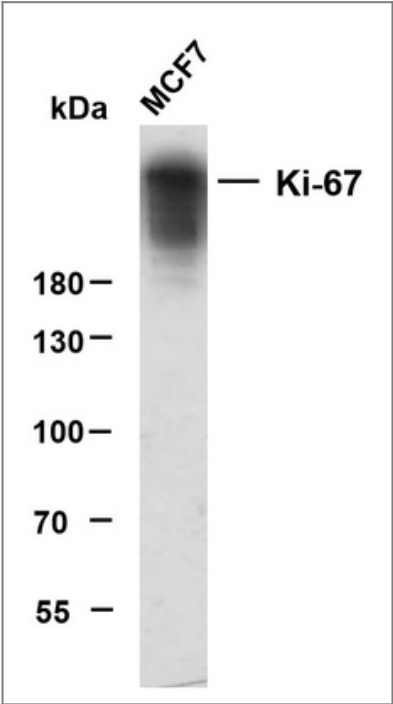
Organism	Gene ID	UniProt ID
Human	4288 ;	P46013 ;

Cellular Localization Nuclear

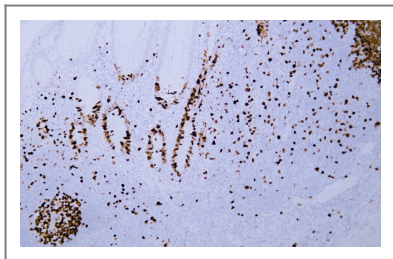
Tissue specificity Nuclear

Function developmental stage:Expression of this antigen occurs preferentially during late G1, S, G2 and M phases of the cell cycle, while in cells in G0 phase the antigen cannot be detected.,Function:Thought to be required for maintaining cell proliferation.,online information:Ki-67 entry,similarity:Contains 1 FHA domain.,subcellular location:Predominantly localized in the G1 phase in the perinucleolar region, in the later phases it is also detected throughout the nuclear interior, being predominantly localized in the nuclear matrix. In mitosis, it is present on all chromosomes.,subunit:Interacts with KIF15. Binds through the FHA domain to MKI67IP.,

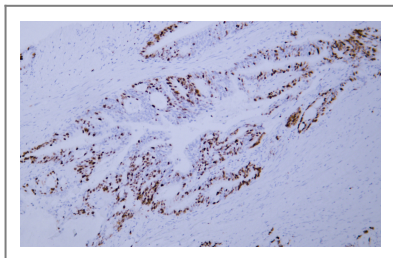
| Validation Data



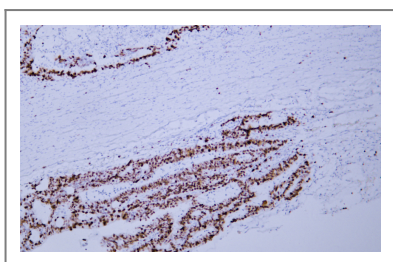
Whole cell lysates were separated by 6% SDS-PAGE, and the membrane was blotted with anti-Ki-67(ABT001)antibody. The HRP-conjugated Goat anti-Mouse IgG(H + L) antibody was used to detect the antibody. Lane 1: MCF7



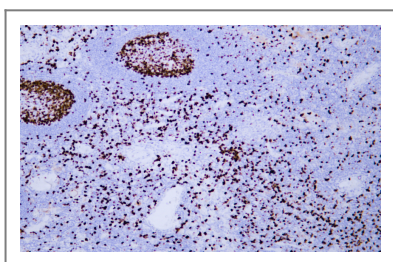
Human appendix tissue was stained with Anti-Ki-67 (ABT001) Antibody



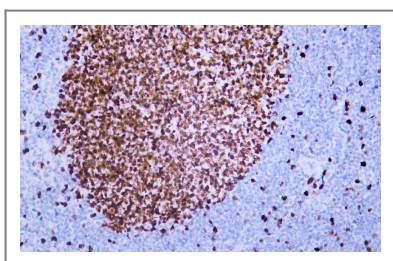
Human colon carcinoma tissue was stained with Anti-Ki-67 (ABT001) Antibody



Human colon carcinoma tissue was stained with Anti-Ki-67 (ABT001) Antibody



Human malignant melanoma tissue was stained with Anti-Ki-67 (ABT001) Antibody



Human tonsil tissue was stained with Anti-Ki-67 (ABT001) Antibody

| Contact information

Orders: order@immunoway.com
Support: tech@immunoway.com
Telephone: 877-594-3616 (Toll Free), 408-747-0185
Website: <http://www.immunoway.com>
Address: 2200 Ringwood Ave San Jose, CA 95131 USA



Please scan the QR code
to access additional
product information:
Ki-67 (ABT001)
Mouse mAb

