

GST-Pi (ABT-GSTP1) Mouse mAb

CatalogNo: YM4899

Key Features

Host Species

- Mouse

Reactivity

- Human,

Applications

- IHC, WB, IF, ELISA

MW

- 23kD (Calculated)
26kD (Observed)

Isotype

- IgG1, Kappa

Recommended Dilution Ratios

IHC 1:200-1000

WB 1:500-2000

IF 1:100-500

ELISA 1:1000-5000

Storage

Storage* -15°C to -25°C/1 year (Do not lower than -25°C)

Formulation PBS, 50% glycerol, 0.05% Proclin 300, 0.05% BSA

Basic Information

Clonality Monoclonal

Clone Number ABT-GSTP1

Immunogen Information

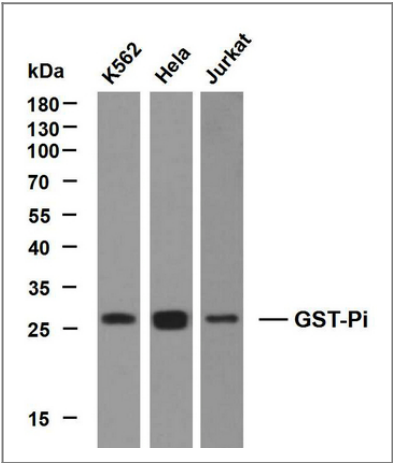
Immunogen Synthesized peptide derived from human GST-Pi AA range: 150-210

Specificity The antibody can specifically recognize human GST-Pi protein. In western blotting of Hela cell lysate, the antibody can label a 26 kDa band corresponding to GST-Pi.

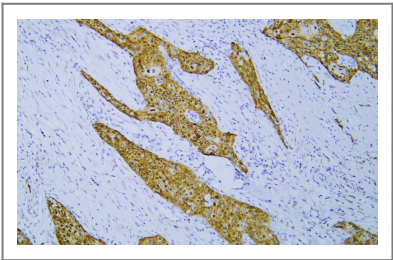
Target Information

Gene name	GSTP1 FAES3 GST3		
Protein Name	Deafness;Deafness X-linked 7;DFN7;FAEES3;Fatty Acid Ethyl Ester Synthase III;Glutathione S Transferase 3;Glutathione S Transferase Pi;Glutathione S-transferase P;Glutathione S-transferase pi 1;GST class-pi;GST3;GSTP;Gstp1;GSTP1-1;GSTP1_HUMAN;PI;X linked 7		
	Organism	Gene ID	UniProt ID
	Human	2950 ;	P09211 ;
	Mouse		P19157 ;
	Rat		P04906 ;
Cellular Localization	Cytoplasmic		
Tissue specificity	Esophageal squamous cell carcinoma		
Function	Catalytic activity:RX + glutathione = HX + R-S-glutathione.,Function:Conjugation of reduced glutathione to a wide number of exogenous and endogenous hydrophobic electrophiles.,online information:The Singapore human mutation and polymorphism database,similarity:Belongs to the GST superfamily. Pi family.,similarity:Contains 1 GST C-terminal domain.,similarity:Contains 1 GST N-terminal domain.,subunit:Homodimer.,		

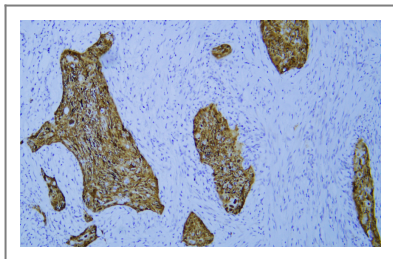
Validation Data



Various whole cell lysates were separated by 12% SDS-PAGE, and the membrane was blotted with anti-GST-Pi (ABT-GSTP1) antibody. The HRP-conjugated Goat anti-Mouse IgG(H + L) antibody was used to detect the antibody. Lane 1: K562 Lane 2: HeLa Lane 3: Jurkat



Human esophageal squamous cell carcinoma tissue was stained with Anti-GST-Pi (ABT-GSTP1) Antibody



Human esophageal squamous cell carcinoma tissue was stained with Anti-GST-Pi (ABT-GSTP1) Antibody

| Contact information

Orders: order@immunoway.com
Support: tech@immunoway.com
Telephone: 877-594-3616 (Toll Free), 408-747-0185
Website: <http://www.immunoway.com>
Address: 2200 Ringwood Ave San Jose, CA 95131 USA



Please scan the QR code to access additional product information:
GST-Pi (ABT-GSTP1)
Mouse mAb

For Research Use Only. Not for Use in Diagnostic Procedures.

[Antibody](#) | [ELISA Kits](#) | [Protein](#) | [Reagents](#)