

MAGE-C1 (ABT339) Mouse mAb

CatalogNo: YM4898

Key Features

Host Species

- Mouse

Reactivity

- Human

Applications

- IHC, WB, IF, ELISA

MW

- 124kD (Calculated)
180kD (Observed)

Isotype

- IgG1, Kappa

Recommended Dilution Ratios

IHC 1:200-1000

WB 1:500-2000

IF 1:100-500

ELISA 1:1000-5000

Storage

Storage* -15°C to -25°C/1 year (Do not lower than -25°C)

Formulation PBS, 50% glycerol, 0.05% Proclin 300, 0.05% BSA

Basic Information

Clonality Monoclonal

Clone Number ABT339

Immunogen Information

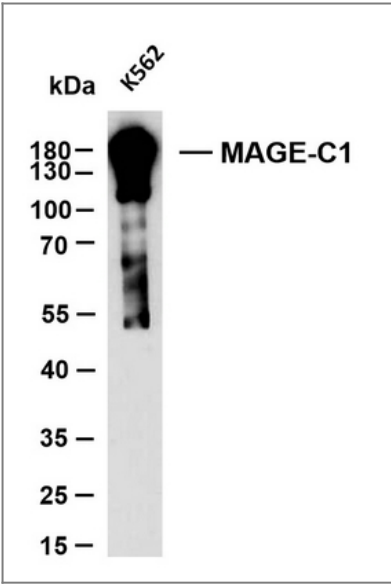
Immunogen Synthesized peptide derived from human MAGE-C1 AA range: 700-800

Specificity The antibody can specifically recognize human MAGE-C1 protein. In western blotting of K562 cell lysate, the antibody can label a 190 kDa band corresponding to MAGE-C1.

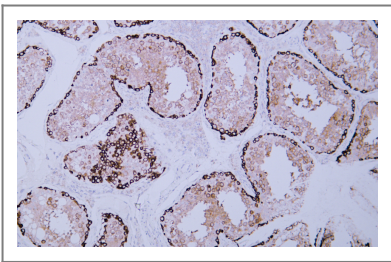
Target Information

| | | | |
|-----------------------|---|------------------------|--------------------------|
| Gene name | MAGEC1 | | |
| Protein Name | MAGE-C1 | | |
| | Organism | Gene ID | UniProt ID |
| | Human | 9947 ; | O60732 ; |
| Cellular Localization | Cytoplasmic | | |
| Tissue specificity | Expressed in testis and in tumors of a wide variety of histologic types. | | |
| Function | similarity:Contains 1 MAGE domain.,tissue specificity:Expressed in testis and in tumors of a wide variety of histologic types., | | |

Validation Data



K562 whole cell lysates were separated by 10% SDS-PAGE, and the membrane was blotted with anti-MAGE-C1(ABT339)antibody. The HRP-conjugated Goat anti-Mouse IgG(H + L) antibody was used to detect the antibody. Lane 1: K562



Human testis tissue was stained with Anti-MAGE-C1 (ABT339) Antibody

Contact information

Orders: order@immunoway.com
Support: tech@immunoway.com
Telephone: 877-594-3616 (Toll Free), 408-747-0185
Website: http://www.immunoway.com
Address: 2200 Ringwood Ave San Jose, CA 95131 USA



Please scan the QR code
to access additional
product information:
MAGE-C1 (ABT339)
Mouse mAb

For Research Use Only. Not for Use in Diagnostic Procedures.

[Antibody](#) | [ELISA Kits](#) | [Protein](#) | [Reagents](#)