

## PCNA Cell Nuclear Antigen (ABT221) Mouse mAb

CatalogNo: YM4842

### Key Features

#### Host Species

- Mouse

#### Reactivity

- Human, Mouse, Rat,

#### Applications

- IHC, WB, IF, ELISA

#### MW

- 29kD (Calculated)
- 35kD (Observed)

#### Isotype

- IgG2b, Kappa

### Recommended Dilution Ratios

**IHC 1:200-1000**

**WB 1:500-2000**

**IF 1:100-500**

**ELISA 1:1000-5000**

### Storage

**Storage\*** -15°C to -25°C/1 year (Do not lower than -25°C)

**Formulation** PBS, 50% glycerol, 0.05% Proclin 300, 0.05% BSA

### Basic Information

**Clonality** Monoclonal

**Clone Number** ABT221

### Immunogen Information

**Immunogen** Synthesized peptide derived from human Proliferating Cell Nuclear Antigen AA range: 1-100

**Specificity** The antibody can specifically recognize human PCNA protein. In western blotting of Hela, A431 and HEK293 cell lysates, the antibody can label a 30 kDa band corresponding to PCNA.

## Target Information

**Gene name** PCNA  
**Protein Name** Proliferating cell nuclear antigen

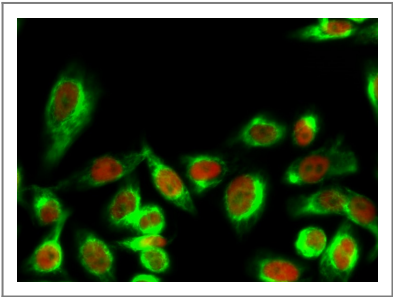
Organism	Gene ID	UniProt ID
Human	<a href="#">5111</a> ;	<a href="#">P12004</a> ;
Mouse	<a href="#">18538</a> ;	<a href="#">P17918</a> ;
Rat	<a href="#">25737</a> ;	<a href="#">P04961</a> ;

**Cellular Localization** Nuclear

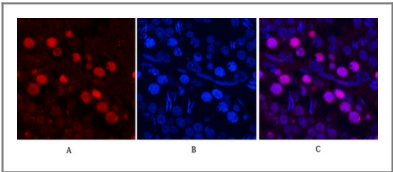
**Tissue specificity** Tonsil/ Colon

**Function** Disease:Antibodies are present in sera from patients with systemic lupus erythematosus.,Function:This protein is an auxiliary protein of DNA polymerase delta and is involved in the control of eukaryotic DNA replication by increasing the polymerase's processibility during elongation of the leading strand.,online information:PCNA entry,PTM:Upon methyl methanesulfonate-induced DNA damage, mono-ubiquitinated by the UBE2B-RAD18 complex on Lys-164. This induces non-canonical poly-ubiquitination on Lys-164 through 'Lys-63' linkage of ubiquitin moieties by the E2 complex UBE2N-UBE2V2 and the E3 ligases RNF8 and SHPRH, which are required for DNA repair.,similarity:Belongs to the PCNA family.,subunit:Homotrimer. Interacts with KCTD10. Interacts with PPP1R15A (By similarity). Forms a complex with activator 1 heteropentamer in the presence of ATP. Interacts with POLH, POLK, DNMT1, ERCC5/XPG, FEN1, CDC6, APEX2 and POLDIP2. Interacts with EXO1 and SHPRH. Forms a ternary complex with DNTTIP2 and core histone. Interacts with POLD1, POLD3 and POLD4. Interacts with BAZ1B/WSTF; the interaction is direct.,

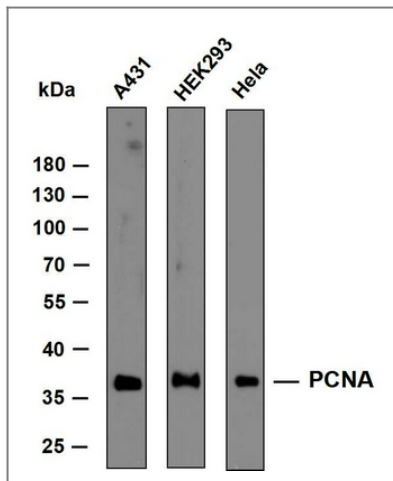
## Validation Data



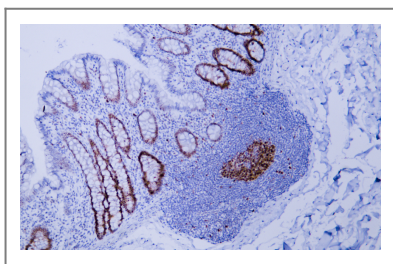
Immunofluorescence analysis of Hela cell. 1,14-3-3  $\theta/\tau$  (phospho Ser232) Polyclonal Antibody(green) was diluted at 1:200(4° overnight). (red) was diluted at 1:200(4° overnight). 2, Goat Anti Rabbit Alexa Fluor 488 Catalog:RS3211 was diluted at 1:1000(room temperature, 50min). Goat Anti Mouse Alexa Fluor 594 Catalog:RS3608 was diluted at 1:1000(room temperature, 50min).



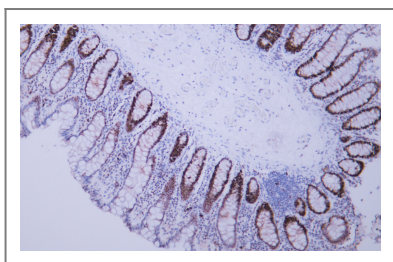
Immunofluorescence analysis of Rat-testis tissue. 1,PCNA Monoclonal Antibody(12D10)(red) was diluted at 1:200(4°C,overnight). 2, Cy3 labeled Secondary antibody was diluted at 1:300(room temperature, 50min).3, Picture B: DAPI(blue) 10min. Picture A:Target. Picture B: DAPI. Picture C: merge of A+B



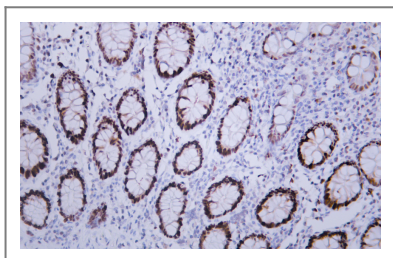
Various whole cell lysates were separated by 10% SDS-PAGE, and the membrane was blotted with anti-PCNA antibody. The HRP-conjugated anti-Mouse IgG antibody was used to detect the antibody.



Human colon tissue was stained with Anti-Proliferating Cell Nuclear Antigen (ABT221) Antibody



Human colon tissue was stained with Anti-Proliferating Cell Nuclear Antigen (ABT221) Antibody



Human colon tissue was stained with Anti-Proliferating Cell Nuclear Antigen (ABT221) Antibody

## Contact information

Orders: [order@immunoway.com](mailto:order@immunoway.com)  
 Support: [tech@immunoway.com](mailto:tech@immunoway.com)  
 Telephone: 877-594-3616 (Toll Free), 408-747-0185  
 Website: <http://www.immunoway.com>  
 Address: 2200 Ringwood Ave San Jose, CA 95131 USA



Please scan the QR code to access additional product information:  
**PCNA Cell Nuclear Antigen (ABT221) Mouse mAb**