

PSMD11 (PTR1354) Mouse mAb

CatalogNo: YM4769

Key Features

Host Species

- Mouse

Reactivity

- Human, Mouse, Rat,

Applications

- WB, IF, ELISA

MW

- 47kD (Calculated)
- 47kD (Observed)

Isotype

- IgG3, Kappa

Recommended Dilution Ratios

WB 1:500-2000

IF 1:100-500

ELISA 1:1000-5000

Storage

Storage* -15°C to -25°C/1 year(Do not lower than -25°C)

Formulation PBS, 50% glycerol, 0.05% Proclin 300, 0.05%BSA

Basic Information

Clonality Monoclonal

Clone Number PTR1354

Immunogen Information

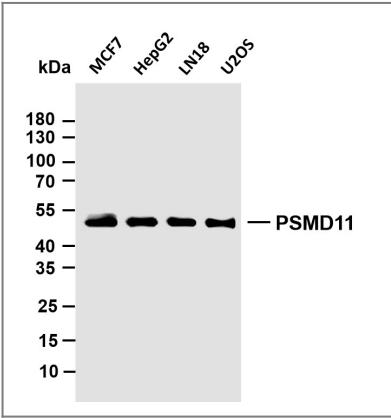
Immunogen Synthesized peptide derived from human protein.AA range:250-350

Specificity This antibody detects endogenous levels of PSMD11.

Target Information

Gene name	PSMD11		
Protein Name	26S proteasome non-ATPase regulatory subunit 11		
	Organism	Gene ID	UniProt ID
	Human	5717 ;	O00231 ;
	Mouse	69077 ;	Q8BG32 ;
Tissue specificity	Highly expressed in embryonic stem cells (ESCs). Expression decreases as ESCs differentiate.		
Function	Function:Acts as a regulatory subunit of the 26S proteasome which is involved in the ATP-dependent degradation of ubiquitinated proteins.,similarity:Belongs to the proteasome subunit S9 family.,similarity:Contains 1 PCI domain.,subunit:Component of the PA700 complex.,		

Validation Data



Various whole cell lysates were separated by 10% SDS-PAGE, and the membrane was blotted with anti-PSMD11 (PTR1354) antibody. The HRP-conjugated Goat anti-Mouse IgG(H + L) antibody was used to detect the antibody. Lane 1: MCF7 Lane 2: HepG2 Lane 3: LN18 Lane 4: U2OS

Contact information

Orders: order@immunoway.com
Support: tech@immunoway.com
Telephone: 877-594-3616 (Toll Free), 408-747-0185
Website: <http://www.immunoway.com>
Address: 2200 Ringwood Ave San Jose, CA 95131 USA



Please scan the QR code to access additional product information:
PSMD11 (PTR1354)
Mouse mAb