

Smad1/9 (PTR2351) Mouse mAb

CatalogNo: YM4733

Key Features

Host Species

- Mouse

Reactivity

- Human, Mouse, Rat, Monkey

Applications

- WB, IF, ELISA

MW

- 58-60kD (Observed)

Isotype

- IgG2a, Kappa

Recommended Dilution Ratios

WB 1:500-2000

IF 1:100-500

ELISA 1:1000-5000

Storage

Storage*

-15°C to -25°C/1 year(Do not lower than -25°C)

Formulation

PBS, 50% glycerol, 0.05% Proclin 300, 0.05%BSA

Basic Information

Clonality

Monoclonal

Clone Number

PTR2351

Immunogen Information

Immunogen

Synthesized peptide derived from human Smad1/9 AA range: 400-465

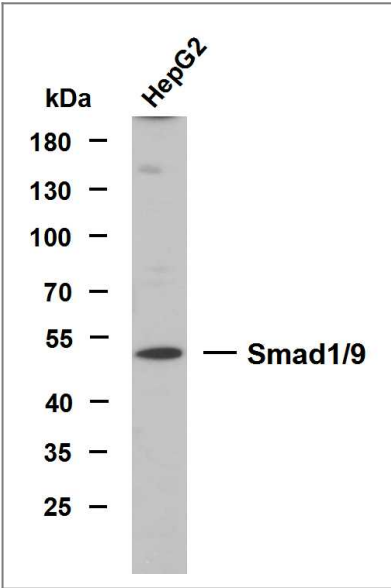
Specificity

This antibody detects endogenous levels of Smad1/9 protein.

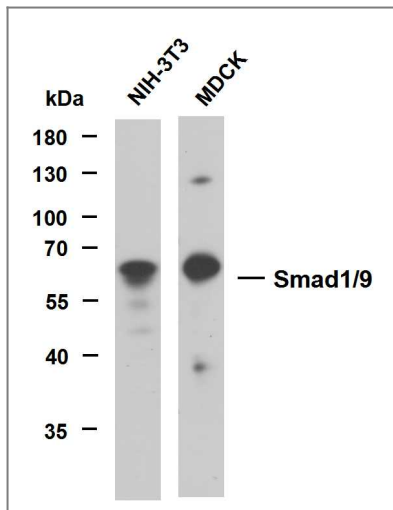
Target Information

Gene name	SMAD1 SMAD9		
Protein Name	Mothers against decapentaplegic homolog 1 (MAD homolog 1/9) (Mothers against DPP homolog 1/9) (JV4-1) (Mad-related protein 1) (SMAD family member 1) (SMAD 1/9) (Smad1) (hSMAD1) (Transforming growth factor-beta-signaling protein 1) (BSP-1)		
	Organism	Gene ID	UniProt ID
	Human	4086 ;	Q15797 ; O15198 ;
	Mouse	17125 ;	P70340 ;
Tissue specificity	Ubiquitous. Highest expression seen in the heart and skeletal muscle.		
Function	Transcriptional modulator activated by BMP (bone morphogenetic proteins) type 1 receptor kinase. SMAD1 is a receptor-regulated SMAD (R-SMAD). SMAD1/OAZ1/PSMB4 complex mediates the degradation of the CREBBP/EP300 repressor SNIP1. May act synergistically with SMAD4 and YY1 in bone morphogenetic protein (BMP)-mediated cardiac-specific gene expression.		

Validation Data



Whole cell lysates were separated by 10% SDS-PAGE, and the membrane was blotted with anti-Smad1/9(PTR2351) antibody. The HRP-conjugated Goat anti-Mouse IgG(H + L) antibody was used to detect the antibody. Lane 1: HepG2



Various whole cell lysates were separated by 10% SDS-PAGE, and the membrane was blotted with anti-Smad1/9(PTR2351) antibody. The HRP-conjugated Goat anti-Mouse IgG(H + L) antibody was used to detect the antibody. Lane 1: NIH-3T3 Lane 2: MDCK

Contact information

Orders: order@immunoway.com
 Support: tech@immunoway.com
 Telephone: 877-594-3616 (Toll Free), 408-747-0185
 Website: <http://www.immunoway.com>
 Address: 2200 Ringwood Ave San Jose, CA 95131 USA



Please scan the QR code to access additional product information:
Smad1/9 (PTR2351)
Mouse mAb

For Research Use Only. Not for Use in Diagnostic Procedures.

[Antibody](#) | [ELISA Kits](#) | [Protein](#) | [Reagents](#)