

## Pax-2 (PTR1301) Mouse mAb

CatalogNo: YM4710 **Recombinant** 

### Key Features

#### Host Species

- Mouse

#### Reactivity

- Human

#### Applications

- IHC,IF,ELISA

#### MW

- 45kD (Calculated)

#### Isotype

- IgG1,Kappa

### Storage

**Storage\*** -15°C to -25°C/1 year(Do not lower than -25°C)**Formulation** PBS, 50% glycerol, 0.05% Proclin 300, 0.05%BSA

### Recommended Dilution Ratios

**IHC 1:200-1000****IF 1:100-500****ELISA 1:1000-5000**

### Basic Information

**Clonality** Monoclonal**Clone Number** PTR1301

### Immunogen Information

**Immunogen** Synthesized peptide derived from human PAX2. AA range: 150-250**Specificity** This antibody detects endogenous levels of PAX2 protein.

### Target Information

**Gene name** PAX2

**Protein Name** Paired box protein Pax-2

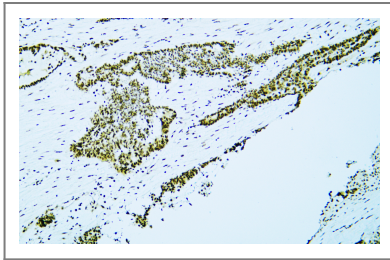
Organism	Gene ID	UniProt ID
Human	<a href="#">5076;</a>	<a href="#">Q02962;</a>
Mouse	<a href="#">18504;</a>	<a href="#">P32114;</a>

**Cellular Localization** Nuclear

**Tissue specificity** Expressed in primitive cells of the kidney, ureter, eye, ear and central nervous system.

**Function** Transcription factor that may have a role in kidney cell differentiation . Has a critical role in the development of the urogenital tract, the eyes, and the CNS.

## Validation Data



Human ovarian serous carcinoma tissue was stained with Anti-PAX2 (PTR1301) Antibody

## Contact information

Orders: [order@immunoway.com](mailto:order@immunoway.com)  
Support: [tech@immunoway.com](mailto:tech@immunoway.com)  
Telephone: 877-594-3616 (Toll Free), 408-747-0185  
Website: <http://www.immunoway.com>  
Address: 2200 Ringwood Ave San Jose, CA 95131 USA



Please scan the QR code to access additional product information:  
**Pax-2 (PTR1301)**  
**Mouse mAb**

For Research Use Only. Not for Use in Diagnostic Procedures.

[Antibody](#) | [ELISA Kits](#) | [Protein](#) | [Reagents](#)