

HMGB1 (PTR2339) Mouse mAb

CatalogNo: YM4697

Key Features

Host Species

- Mouse

Reactivity

- Human, Mouse, Rat

Applications

- WB, IF, ELISA

MW

- 25kD (Calculated)
24kD (Observed)

Isotype

- IgG1, Kappa

Recommended Dilution Ratios

WB 1:500-2000

IF 1:100-500

ELISA 1:1000-5000

Storage

Storage* -15°C to -25°C/1 year (Do not lower than -25°C)

Formulation PBS, 50% glycerol, 0.05% Proclin 300, 0.05% BSA

Basic Information

Clonality Monoclonal

Clone Number PTR2339

Immunogen Information

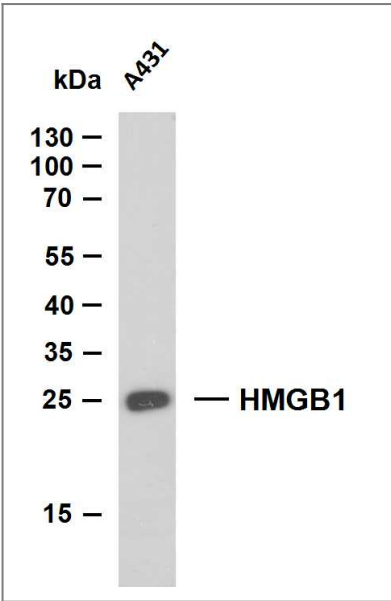
Immunogen Synthesized peptide derived from human HMGB1 AA range: 100-200

Specificity This antibody detects endogenous levels of HMGB1 protein.

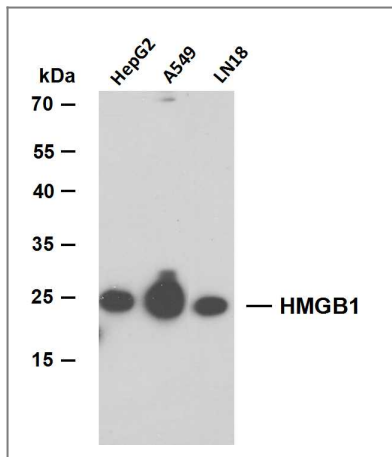
Target Information

Gene name	HMGB1 HMG1		
Protein Name	High mobility group protein B1 (High mobility group protein 1) (HMG-1)		
	Organism	Gene ID	UniProt ID
	Human	3146;	P09429;
	Mouse	100862258;	P63158;
	Rat	25459;	P63159;
Tissue specificity	Ubiquitous. Expressed in platelets (PubMed:11154118).		
Function	Function: Binds preferentially single-stranded DNA and unwinds double stranded DNA., similarity: Belongs to the HMGB family., similarity: Contains 2 HMG box DNA-binding domains.,		

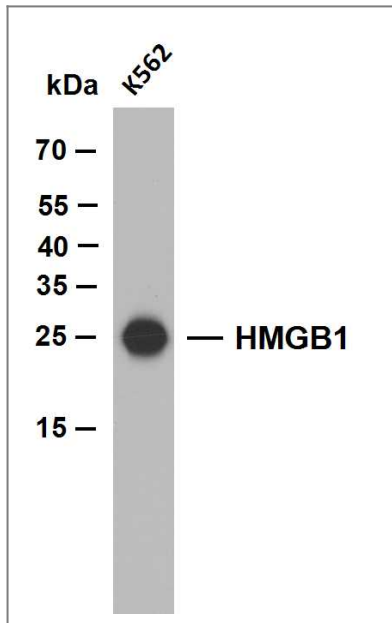
Validation Data



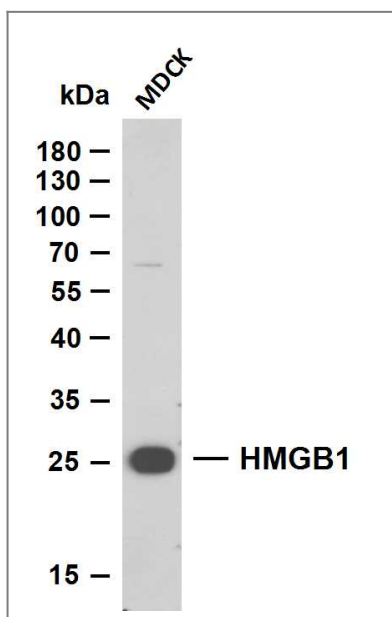
A431 whole cell lysates were separated by 12% SDS-PAGE, and the membrane was blotted with anti-HMGB1(PTR2339)antibody. The HRP-conjugated Goat anti-Mouse IgG(H + L) antibody was used to detect the antibody. Lane 1: A431



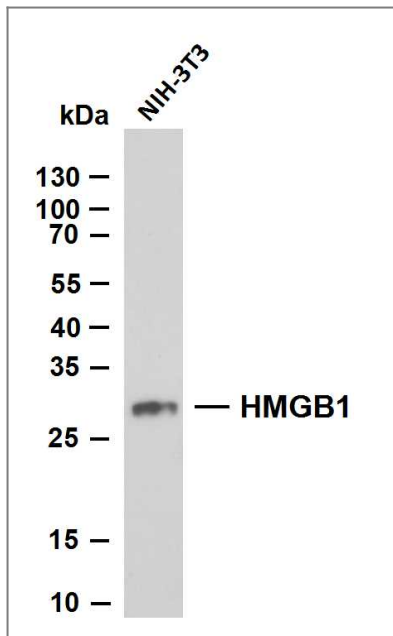
Various whole cell lysates were separated by 12% SDS-PAGE, and the membrane was blotted with anti-HMGB1 (PTR2339) antibody. The HRP-conjugated Goat anti-Mouse IgG (H + L) antibody was used to detect the antibody. Lane 1: HepG2 Lane 2: A549 Lane 3: LN18



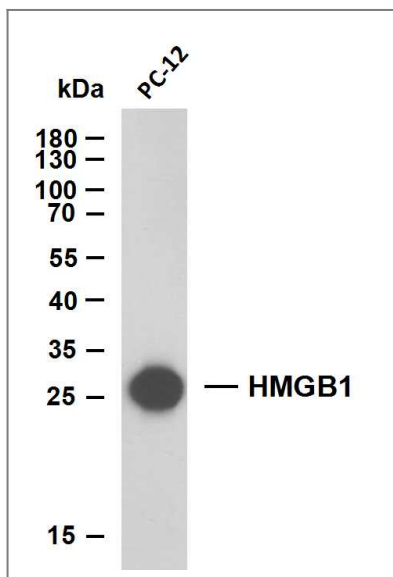
K562 whole cell lysates were separated by 15% SDS-PAGE, and the membrane was blotted with anti-HMGB1 (PTR2339) antibody. The HRP-conjugated Goat anti-Mouse IgG (H + L) antibody was used to detect the antibody. Lane 1: K562 Predicted band size: 24kDa Observed band size: 24kDa



MDCK whole cell lysates were separated by 12% SDS-PAGE, and the membrane was blotted with anti-HMGB1 (PTR2339) antibody. The HRP-conjugated Goat anti-Mouse IgG (H + L) antibody was used to detect the antibody. Lane 1: MDCK



NIH-3T3 whole cell lysates were separated by 12% SDS-PAGE, and the membrane was blotted with anti-HMGB1(PTR2339)antibody. The HRP-conjugated Goat anti-Mouse IgG(H + L) antibody was used to detect the antibody. Lane 1: NIH-3T3



PC-12 whole cell lysates were separated by 12% SDS-PAGE, and the membrane was blotted with anti-HMGB1(PTR2339)antibody. The HRP-conjugated Goat anti-Mouse IgG(H + L) antibody was used to detect the antibody. Lane 1: PC-12

Contact information

Orders: order@immunoway.com
 Support: tech@immunoway.com
 Telephone: 877-594-3616 (Toll Free), 408-747-0185
 Website: <http://www.immunoway.com>
 Address: 2200 Ringwood Ave San Jose, CA 95131 USA



Please scan the QR code to access additional product information:
HMGB1 (PTR2339)
Mouse mAb