

## Sodium Potassium ATPase (PTR2543) Mouse mAb

CatalogNo: YM4684

### Key Features

#### Host Species

- Mouse

#### Reactivity

- Human, Mouse, Rat,

#### Applications

- IHC, IF, ELISA

#### Isotype

- IgG3, Kappa

### Recommended Dilution Ratios

IHC 1:200-1000

IF 1:100-500

ELISA 1:1000-5000

### Storage

**Storage\*** -15°C to -25°C/1 year(Do not lower than -25°C)

**Formulation** PBS, 50% glycerol, 0.05% Proclin 300, 0.05%BSA

### Basic Information

**Clonality** Monoclonal

**Clone Number** PTR2543

### Immunogen Information

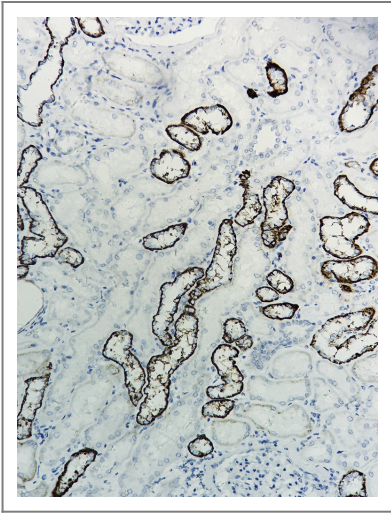
**Immunogen** Synthesized peptide derived from human Sodium Potassium ATPase AA range: 150-250

**Specificity** This antibody detects endogenous levels of Sodium Potassium ATPase protein.

### Target Information

Gene name	ATP1A1		
Protein Name	Sodium/potassium-transporting ATPase subunit alpha-1 (Na(+)/K(+) ATPase alpha-1 subunit) (Sodium pump subunit alpha-1)		
	Organism	Gene ID	UniProt ID
	Human		<a href="#">P05023</a> ; <a href="#">P50993</a> ; <a href="#">P13637</a> ; <a href="#">Q13733</a> ;
	Rat	<a href="#">24211</a> ;	<a href="#">P06685</a> ;
Cellular Localization	Membranous		
Function	Catalytic activity:ATP + H(2)O + Na(+)(In) + K(+)(Out) = ADP + phosphate + Na(+)(Out) + K(+)(In).,Function:This is the catalytic component of the active enzyme, which catalyzes the hydrolysis of ATP coupled with the exchange of sodium and potassium ions across the plasma membrane. This action creates the electrochemical gradient of sodium and potassium ions, providing the energy for active transport of various nutrients.,PTM:Phosphorylation on Tyr-10 modulates pumping activity.,similarity:Belongs to the cation transport ATPase (P-type) family.,similarity:Belongs to the cation transport ATPase (P-type) family. Type IIC subfamily.,subcellular location:Identified by mass spectrometry in melanosome fractions from stage I to stage IV.,subunit:Composed of three subunits: alpha (catalytic), beta and gamma. Binds the HLA class II histocompatibility antigen, DR1.,		

Validation Data



Human kidney tissue was stained with Anti-Sodium Potassium ATPase (PTR2543) Antibody

Contact information

Orders: order@immunoway.com  
Support: tech@immunoway.com  
Telephone: 877-594-3616 (Toll Free), 408-747-0185  
Website: http://www.immunoway.com  
Address: 2200 Ringwood Ave San Jose, CA 95131 USA



Please scan the QR code  
to access additional  
product information:  
**Sodium Potassium  
ATPase (PTR2543)  
Mouse mAb**

---

For Research Use Only. Not for Use in Diagnostic Procedures.

[Antibody](#) | [ELISA Kits](#) | [Protein](#) | [Reagents](#)