

## CD3 (ABT295) Mouse mAb

CatalogNo: YM4628 **Recombinant** 

### Key Features

#### Host Species

- Mouse

#### Reactivity

- Human

#### Applications

- IHC,WB,IF,ELISA

#### MW

- 23kD (Calculated)
- 23kD (Observed)

#### Isotype

- IgG2a,Kappa

### Storage

**Storage\*** -15°C to -25°C/1 year(Do not lower than -25°C)**Formulation** PBS, 50% glycerol, 0.05% Proclin 300, 0.05%BSA

### Recommended Dilution Ratios

**IHC 1:200-1000****WB 1:500-2000****IF 1:100-500****ELISA 1:1000-5000**

### Basic Information

**Clonality** Monoclonal**Clone Number** ABT295

### Immunogen Information

**Immunogen** Synthesized peptide derived from human CD3, CD3E AA range: 1-100**Specificity** The antibody can specifically recognize human CD3e protein, and shows no reaction with CD3d or CD3g. In western blotting of Jurkat cell lysate, the antibody can label a 23 kDa band corresponding to CD3e.

---

## Target Information

**Gene name** CD3E T3E

**Protein Name** CD3, CD3E

Organism	Gene ID	UniProt ID
Human	<a href="#">916</a> ;	<a href="#">P07766</a> ;

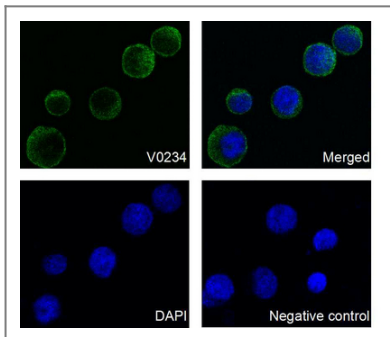
**Cellular Localization** Membranous

**Tissue specificity** Membranous

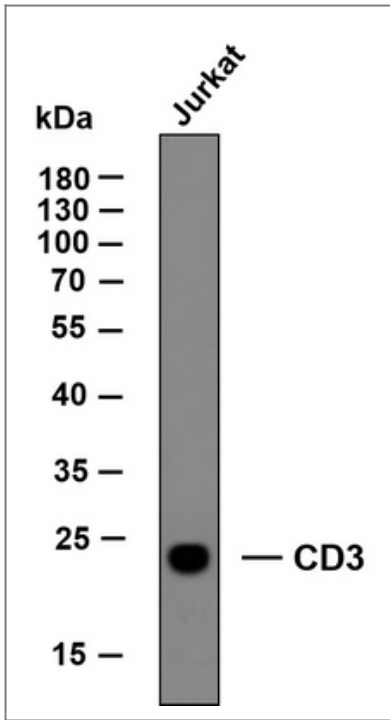
**Function** Function:The CD3 complex mediates signal transduction.,online information:CD3E mutation db,similarity:Contains 1 Ig-like (immunoglobulin-like) domain.,similarity:Contains 1 ITAM domain.,subunit:The TCR/CD3 complex of T-lymphocytes consists of either a TCR alpha/beta or TCR gamma/delta heterodimer coexpressed at the cell surface with the invariant subunits of CD3 labeled gamma, delta, epsilon, zeta, and eta.,

---

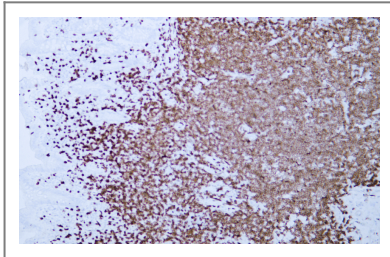
## Validation Data



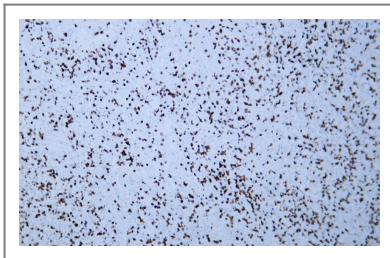
Confocal immunofluorescent analysis of Jurkat cells labeling CD3 (ABT295) mouse mAb followed by Goat Anti-mouse IgG H&L (FITC Conjugate) secondary antibody (green). Counterstained with DAPI (blue). Negative control: PBS was used to instead of primary antibody, followed by Goat Anti-mouse IgG H&L (FITC Conjugate) secondary antibody (green).



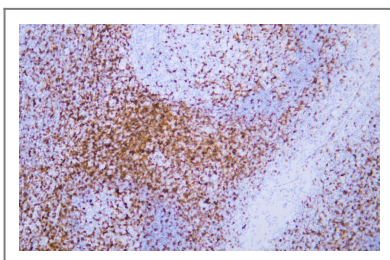
Whole cell lysates of Jurkat were separated by 12% SDS-PAGE, and the membrane was blotted with anti-CD3 antibody. The HRP-conjugated anti-Mouse IgG antibody was used to detect the antibody.



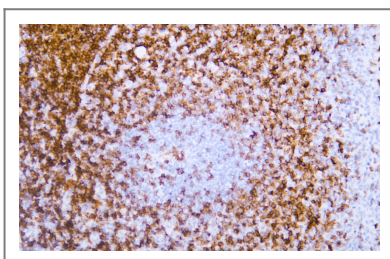
Human appendix tissue was stained with Anti-CD3 (ABT295) Antibody



Human spleen tissue was stained with Anti-CD3 (ABT295) Antibody



Human tonsil tissue was stained with Anti-CD3 (ABT295) Antibody



Human tonsil tissue was stained with Anti-CD3 (ABT295) Antibody

## | Contact information

Orders: order@immunoway.com  
Support: tech@immunoway.com  
Telephone: 877-594-3616 (Toll Free), 408-747-0185  
Website: <http://www.immunoway.com>  
Address: 2200 Ringwood Ave San Jose, CA 95131 USA



Please scan the QR code  
to access additional  
product information:  
**CD3 (ABT295)**  
**Mouse mAb**

---

For Research Use Only. Not for Use in Diagnostic Procedures.

[Antibody](#) | [ELISA Kits](#) | [Protein](#) | [Reagents](#)