

G3BP1 (PTR1324) Mouse mAb

CatalogNo: YM4539 **Recombinant** 

Key Features

Host Species

- Mouse

Reactivity

- Human, Mouse, Rat

Applications

- WB, IF, ELISA

MW

- 52kD (Calculated)
- 68kD (Observed)

Isotype

- IgG2b, Kappa

Storage

Storage* -15°C to -25°C/1 year (Do not lower than -25°C)**Formulation** PBS, 50% glycerol, 0.05% Proclin 300, 0.05% BSA

Recommended Dilution Ratios

WB 1:500-2000**IF 1:100-500****ELISA 1:1000-5000**

Basic Information

Clonality Monoclonal**Clone Number** PTR1324

Immunogen Information

Immunogen Synthesized peptide derived from human protein. AA range: 200-300**Specificity** This antibody detects endogenous levels of G3BP1 protein.

Target Information

Gene name G3BP1 G3BP

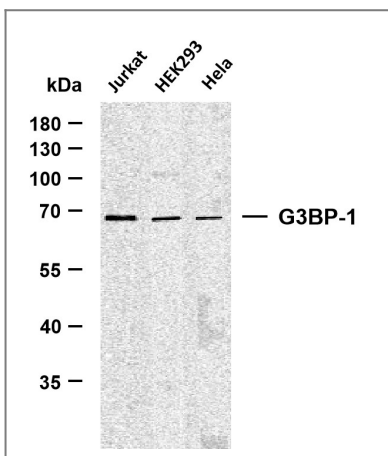
Protein Name Ras GTPase-activating protein-binding protein 1 (G3BP-1) (ATP-dependent DNA helicase VIII) (hDH VIII) (GAP SH3 domain-binding protein 1)

Organism	Gene ID	UniProt ID
Human	10146;	Q13283;
Mouse	27041;	P97855;

Tissue specificity Ubiquitous.

Function ATP- and magnesium-dependent helicase that plays an essential role in innate immunity . Participates in the DNA-triggered cGAS/STING pathway by promoting the DNA binding and activation of CGAS. Enhances also DDX58-induced type I interferon production probably by helping DDX58 at sensing pathogenic RNA . In addition, plays an essential role in stress granule formation . Unwinds preferentially partial DNA and RNA duplexes having a 17 bp annealed portion and either a hanging 3' tail or hanging tails at both 5'- and 3'-ends . Unwinds DNA/DNA, RNA/DNA, and RNA/RNA substrates with comparable efficiency . Acts unidirectionally by moving in the 5' to 3' direction along the bound single-stranded DNA . Phosphorylation-dependent sequence-specific endoribonuclease in vitro . Cleaves exclusively between cytosine and adenine and cleaves MYC mRNA preferentially at the 3'-UTR .

Validation Data



Various whole cell lysates were separated by 10% SDS-PAGE, and the membrane was blotted with anti-G3BP-1 (PTR1324) antibody. The HRP-conjugated Goat anti-Mouse IgG(H + L) antibody was used to detect the antibody. Lane 1: Jurkat Lane 2: HEK293 Lane 3: HeLa

Contact information

Orders: order@immunoway.com
Support: tech@immunoway.com
Telephone: 877-594-3616 (Toll Free), 408-747-0185
Website: http://www.immunoway.com
Address: 2200 Ringwood Ave San Jose, CA 95131 USA



Please scan the QR code
to access additional
product information:
G3BP1 (PTR1324)
Mouse mAb

For Research Use Only. Not for Use in Diagnostic Procedures.

[Antibody](#) | [ELISA Kits](#) | [Protein](#) | [Reagents](#)