

## p15 INK (PTR2192) Mouse mAb

CatalogNo: YM4531 **Recombinant** 

### Key Features

#### Host Species

- Mouse

#### Reactivity

- Human

#### Applications

- WB,IF,ELISA

#### MW

- 15kD (Calculated)
- 15kD (Observed)

#### Isotype

- IgG

### Storage

**Storage\*** -15°C to -25°C/1 year(Do not lower than -25°C)**Formulation** PBS, 50% glycerol, 0.05% Proclin 300, 0.05%BSA

### Recommended Dilution Ratios

**WB 1:500-2000****IF 1:100-500****ELISA 1:1000-5000**

### Basic Information

**Clonality** Monoclonal**Clone Number** PTR2192

### Immunogen Information

**Immunogen** Synthesized peptide derived from human p15 INK (PTR2192) AA range: 50-138**Specificity** This antibody detects endogenous levels of p15 INK protein.

## Target Information

**Gene name** CDKN2B MTS2

**Protein Name** Cyclin-dependent kinase 4 inhibitor B (Multiple tumor suppressor 2) (MTS-2) (p14-INK4b) (p15-INK4b) (p15INK4B)

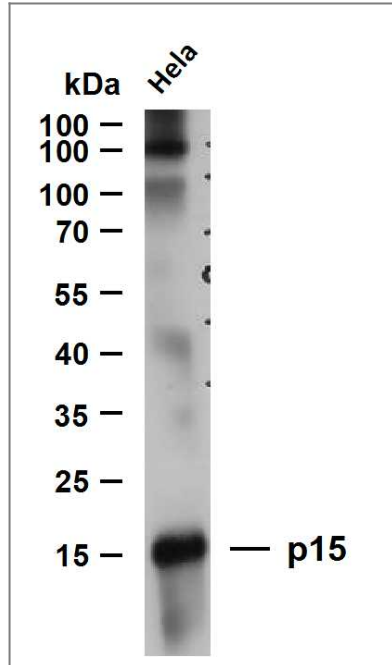
Organism	Gene ID	UniProt ID
Human	<a href="#">1030</a> ;	<a href="#">P42772</a> ;
Mouse	<a href="#">12579</a> ;	<a href="#">P55271</a> ;

**Cellular Localization** Cytoplasmic

**Tissue specificity** Isoform 2 is expressed in normal (keratinocytes, fibroblasts) and tumor cell lines.

**Function** Interacts strongly with CDK4 and CDK6. Potent inhibitor. Potential effector of TGF-beta induced cell cycle arrest.

## Validation Data



Whole cell lysates were separated by 15% SDS-PAGE, and the membrane was blotted with anti-p15 (PTR2192) antibody. The HRP-conjugated Goat anti-Mouse IgG(H + L) antibody was used to detect the antibody. Lane 1: HeLa

## Contact information

Orders: order@immunoway.com  
Support: tech@immunoway.com  
Telephone: 877-594-3616 (Toll Free), 408-747-0185  
Website: http://www.immunoway.com  
Address: 2200 Ringwood Ave San Jose, CA 95131 USA



Please scan the QR code  
to access additional  
product information:  
**p15 INK (PTR2192)**  
**Mouse mAb**

---

For Research Use Only. Not for Use in Diagnostic Procedures.

[Antibody](#) | [ELISA Kits](#) | [Protein](#) | [Reagents](#)