

## CD141 (ABT145) Mouse mAb

CatalogNo: YM4435

### Key Features

#### Host Species

- Mouse

#### Reactivity

- Human, Mouse, Rat,

#### Applications

- IHC, WB, IF, ELISA

#### MW

- 62kD (Calculated)
- 100kD (Observed)

#### Isotype

- IgG2b, Kappa

### Recommended Dilution Ratios

**IHC 1:200-1000**

**WB 1:500-2000**

**IF 1:100-500**

**ELISA 1:1000-5000**

### Storage

**Storage\*** -15°C to -25°C/1 year (Do not lower than -25°C)

**Formulation** PBS, 50% glycerol, 0.05% Proclin 300, 0.05% BSA

### Basic Information

**Clonality** Monoclonal

**Clone Number** ABT145

### Immunogen Information

**Immunogen** Synthesized peptide derived from human CD141 AA range: 50-150

**Specificity** The antibody can specifically recognize human CD141 protein.

## Target Information

Gene name THBD THRM

Protein Name CD141

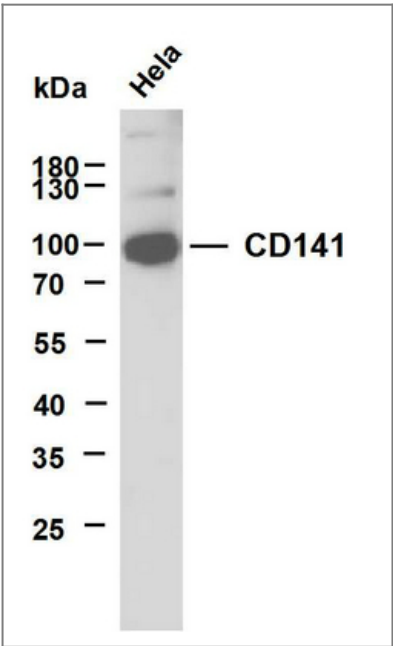
Organism	Gene ID	UniProt ID
Human	<a href="#">7056</a> ;	<a href="#">P07204</a> ;

Cellular Localization Membranous

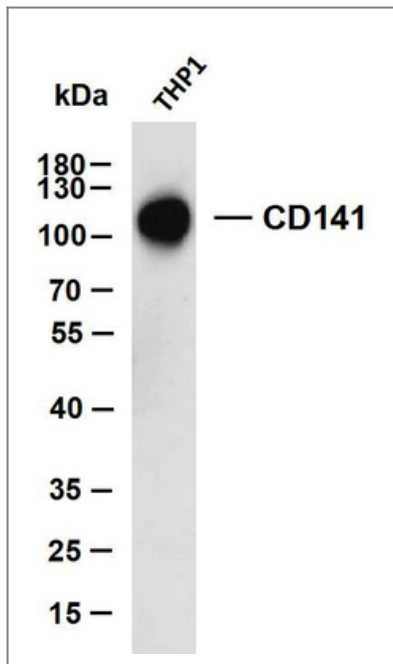
Tissue specificity Endothelial cells are unique in synthesizing thrombomodulin.

Function Disease:Defects in THBD are the cause of thrombophilia due to thrombomodulin defect (THR-THBDD) [MIM:188040]. THR-THBDD is a hemostatic disorder characterized by a tendency to thrombosis.,Function:Thrombomodulin is a specific endothelial cell receptor that forms a 1:1 stoichiometric complex with thrombin. This complex is responsible for the conversion of protein C to the activated protein C (protein Ca). Once evolved, protein Ca scissions the activated cofactors of the coagulation mechanism, factor Va and factor VIIIa, and thereby reduces the amount of thrombin generated.,online information:Thrombomodulin,online information:Thrombomodulin entry,PTM:N-glycosylated.,PTM:The iron and 2-oxoglutarate dependent 3-hydroxylation of aspartate and asparagine is (R) stereospecific within EGF domains.,similarity:Contains 1 C-type lectin domain.,similarity:Contains 6 EGF-like domains.,tissue specificity:Endothelial cells are unique in synthesizing thrombomodulin.,

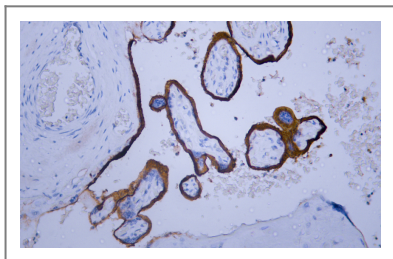
## Validation Data



HeLa whole cell lysates were separated by 10% SDS-PAGE, and the membrane was blotted with anti-CD141 (ABT145) antibody. The HRP-conjugated Goat anti-Mouse IgG(H + L) antibody was used to detect the antibody. Lane 1: HeLa



THP1 whole cell lysates were separated by 10% SDS-PAGE, and the membrane was blotted with anti-CD141(ABT145) antibody. The HRP-conjugated Goat anti-Mouse IgG(H + L) antibody was used to detect the antibody. Lane 1: THP1



Human placenta tissue was stained with anti-CD141(ABT145) antibody.

## Contact information

Orders: [order@immunoway.com](mailto:order@immunoway.com)  
 Support: [tech@immunoway.com](mailto:tech@immunoway.com)  
 Telephone: 877-594-3616 (Toll Free), 408-747-0185  
 Website: <http://www.immunoway.com>  
 Address: 2200 Ringwood Ave San Jose, CA 95131 USA



Please scan the QR code to access additional product information:  
**CD141 (ABT145)**  
**Mouse mAb**

For Research Use Only. Not for Use in Diagnostic Procedures.

[Antibody](#) | [ELISA Kits](#) | [Protein](#) | [Reagents](#)